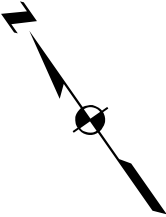
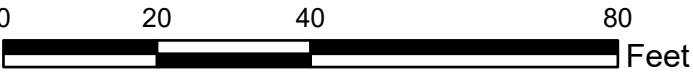


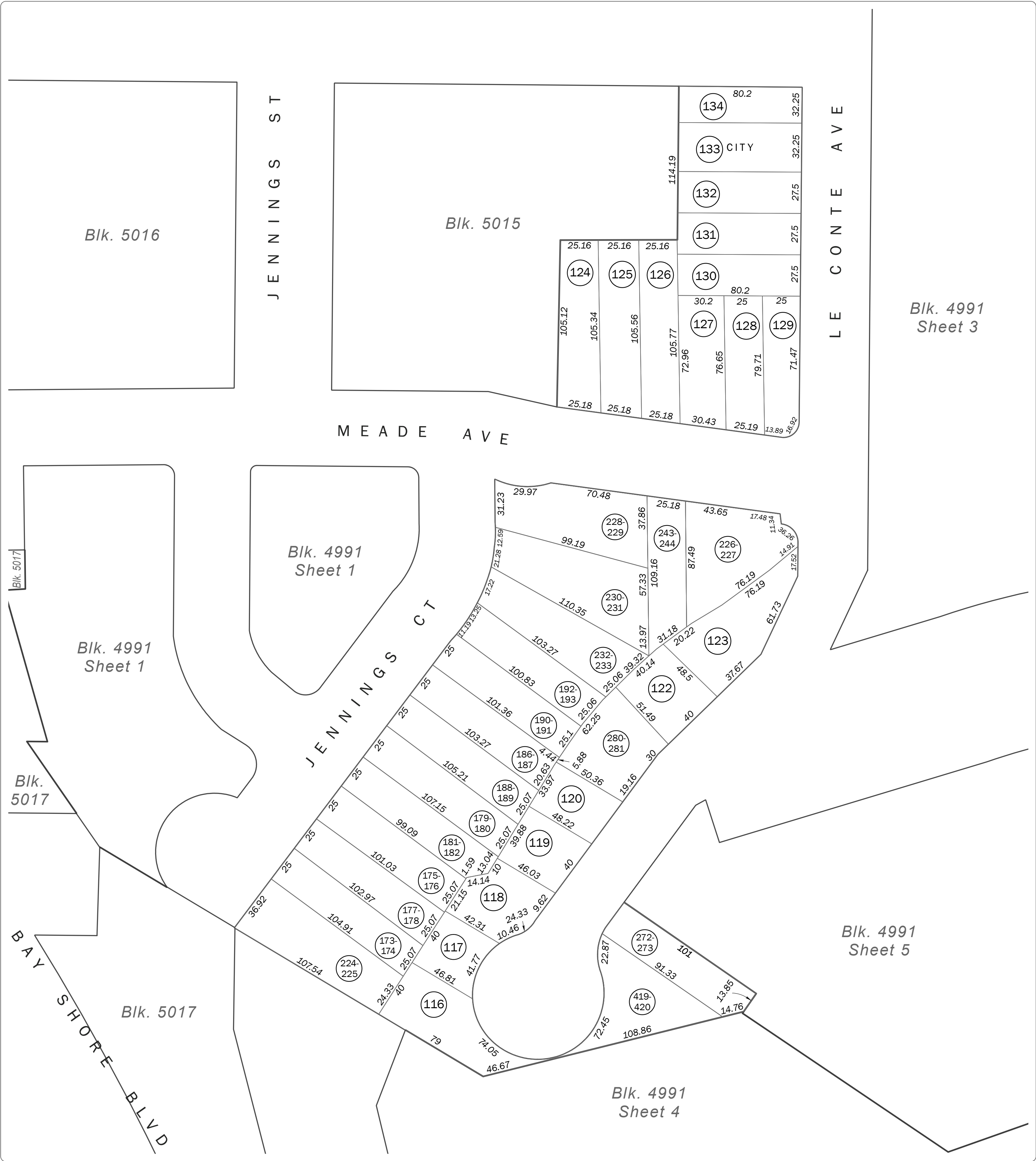
**SAN FRANCISCO CITY & COUNTY
ASSESSOR'S BLOCK MAP**

DISCLAIMER: THIS MAP WAS PREPARED FOR ASSESSMENT PURPOSES ONLY. ASSESSOR'S PARCELS MAY NOT COMPLY WITH LOCAL LOT-SPLIT OR BUILDING SITE ORDINANCES.



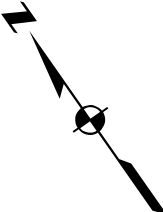
| | |
|---------|------|
| REVISED | 2011 |
|---------|------|



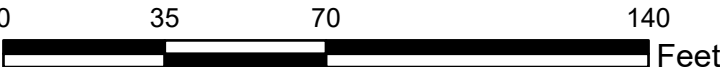


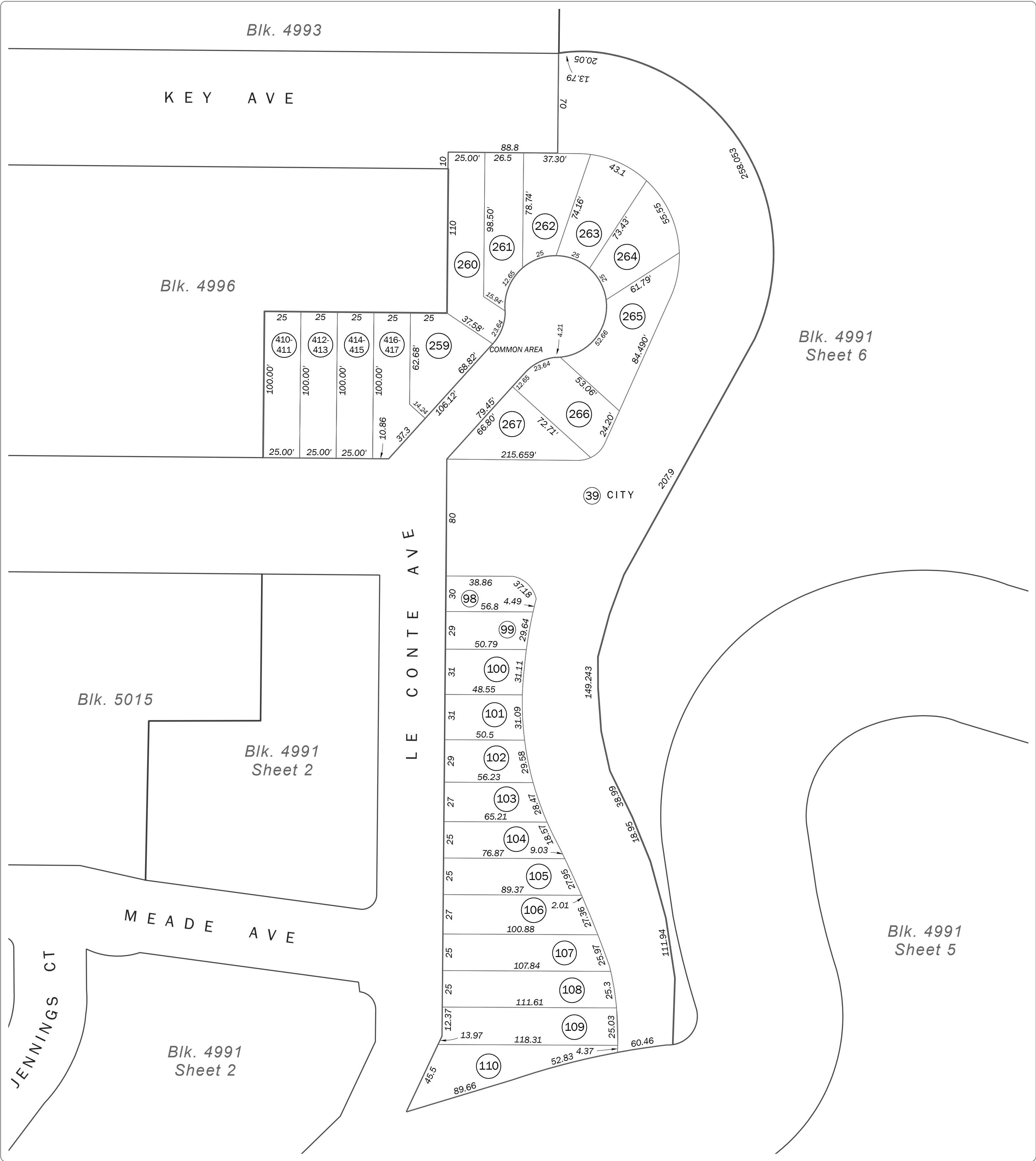
**SAN FRANCISCO CITY & COUNTY
ASSESSOR'S BLOCK MAP**

DISCLAIMER: THIS MAP WAS PREPARED FOR ASSESSMENT PURPOSES ONLY. ASSESSOR'S PARCELS MAY NOT COMPLY WITH LOCAL LOT-SPLIT OR BUILDING SITE ORDINANCES.



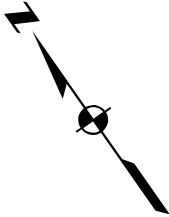
| | |
|---------|------|
| REVISED | 2011 |
|---------|------|



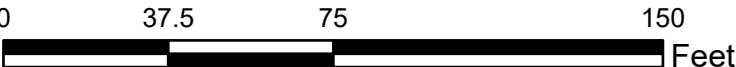


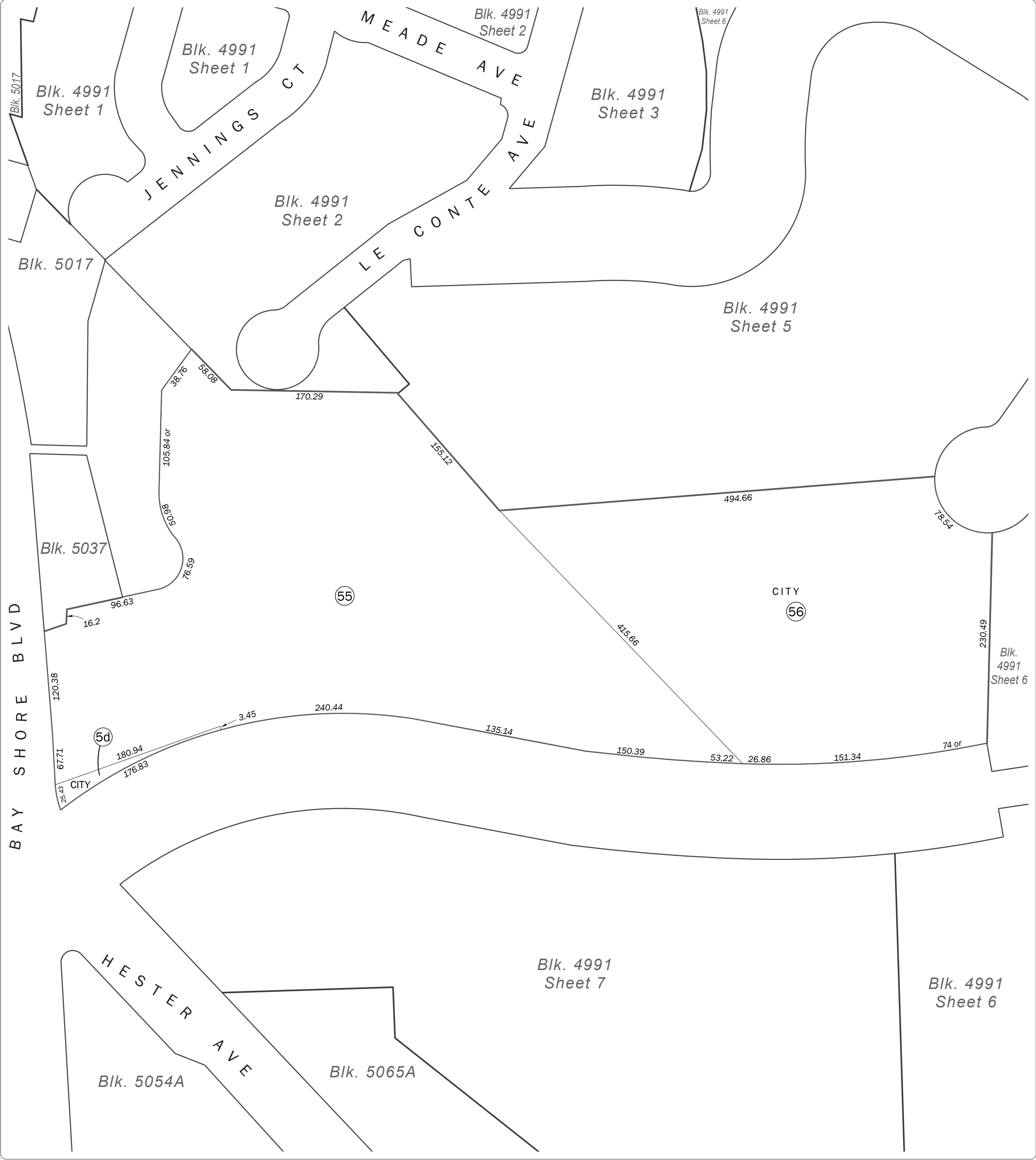
SAN FRANCISCO CITY & COUNTY
ASSESSOR'S BLOCK MAP

DISCLAIMER: THIS MAP WAS PREPARED FOR ASSESSMENT
PURPOSES ONLY. ASSESSOR'S PARCELS MAY NOT COMPLY
WITH LOCAL LOT-SPLIT OR BUILDING SITE ORDINANCES.



| | |
|---------|------|
| REVISED | 2011 |
|---------|------|



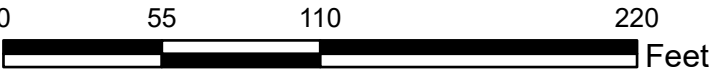


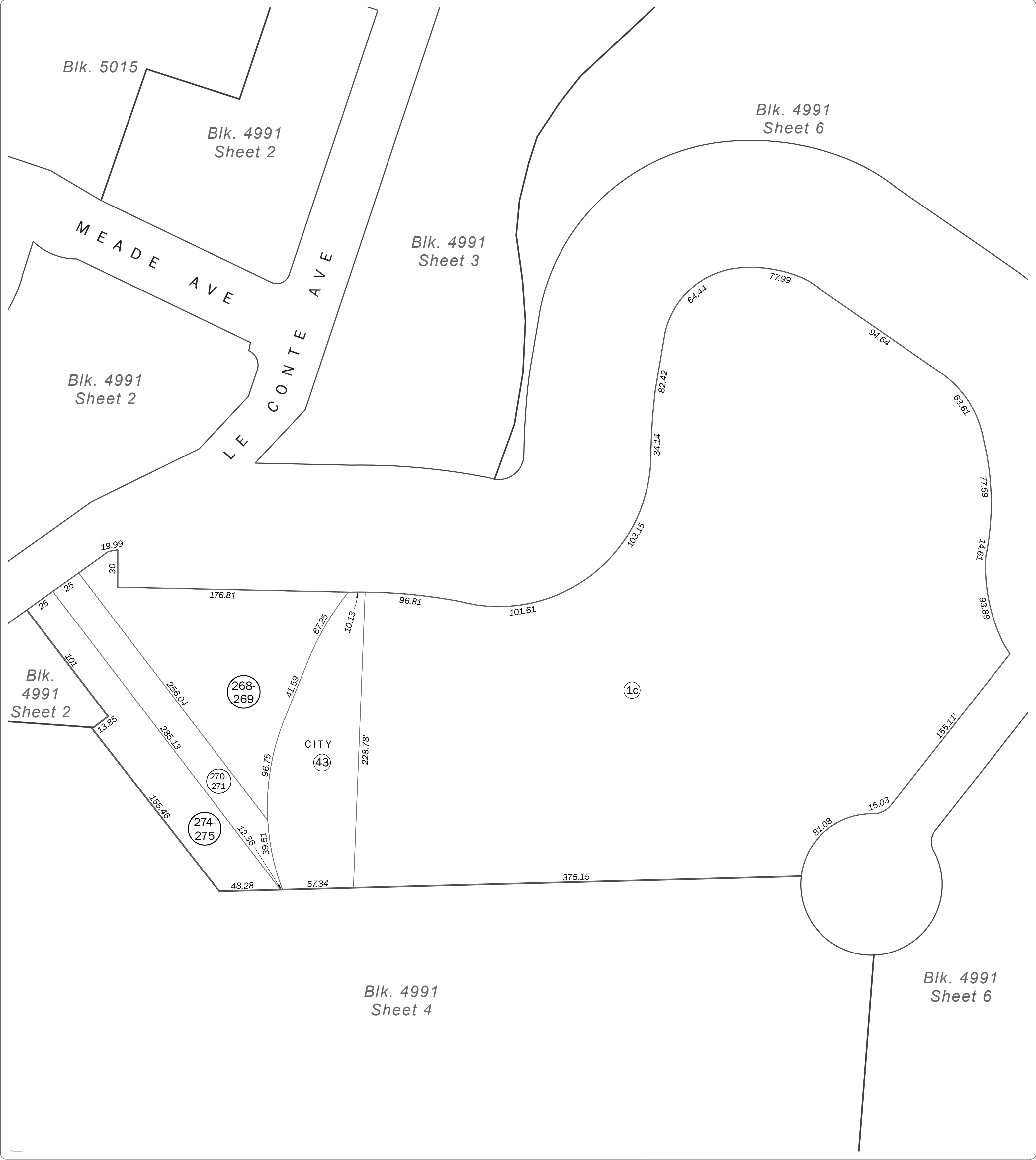
**SAN FRANCISCO CITY & COUNTY
ASSESSOR'S BLOCK MAP**

DISCLAIMER: THIS MAP WAS PREPARED FOR ASSESSMENT
PURPOSES ONLY. ASSESSOR'S PARCELS MAY NOT COMPLY
WITH LOCAL LOT-SPLIT OR BUILDING SITE ORDINANCES.



| | |
|---------|------|
| REVISED | 2011 |
|---------|------|



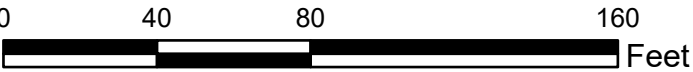


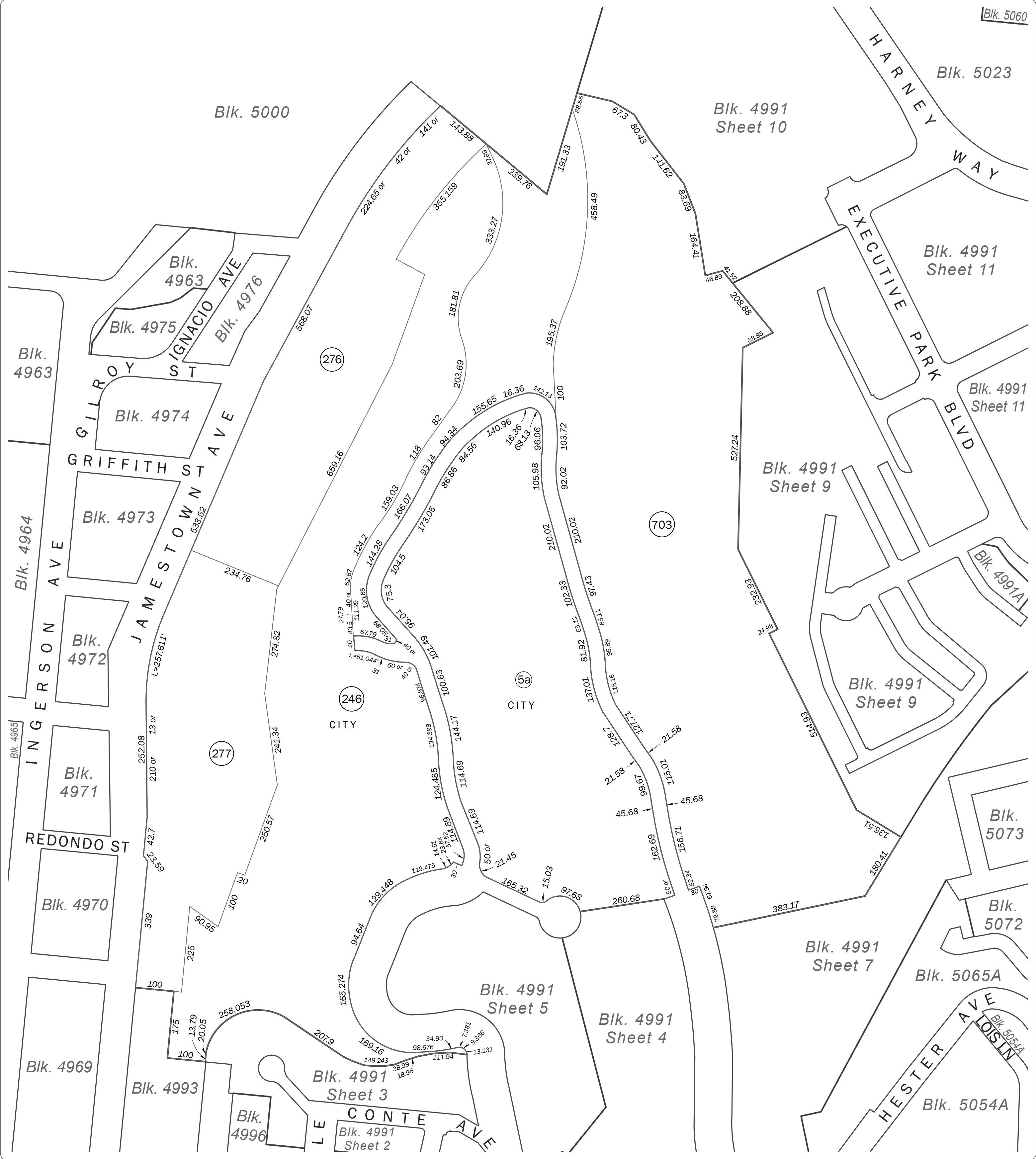
SAN FRANCISCO CITY & COUNTY
ASSESSOR'S BLOCK MAP

DISCLAIMER: THIS MAP WAS PREPARED FOR ASSESSMENT PURPOSES ONLY. ASSESSOR'S PARCELS MAY NOT COMPLY WITH LOCAL LOT-SPLIT OR BUILDING SITE ORDINANCES.



| | |
|---------|------|
| REVISED | 2011 |
|---------|------|

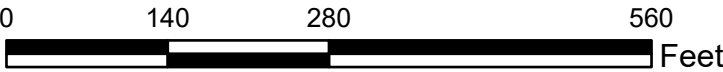
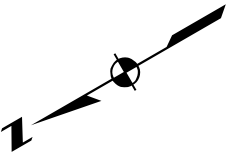


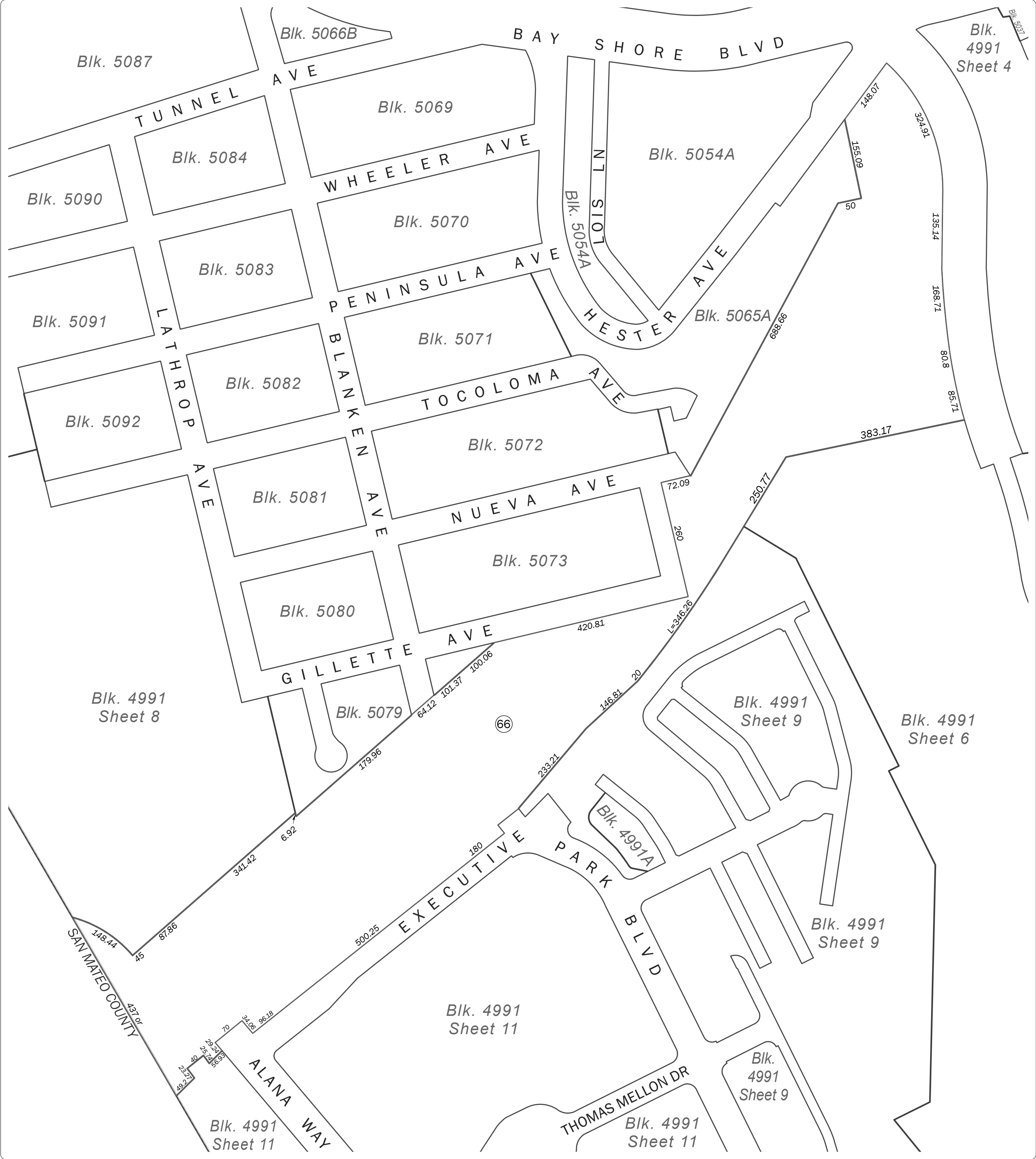


**SAN FRANCISCO CITY & COUNTY
ASSESSOR'S BLOCK MAP**

DISCLAIMER: THIS MAP WAS PREPARED FOR ASSESSMENT PURPOSES ONLY. ASSESSOR'S PARCELS MAY NOT COMPLY WITH LOCAL LOT-SPLIT OR BUILDING SITE ORDINANCES.

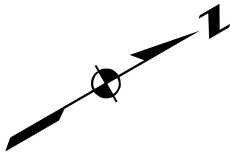
| | |
|---------|------|
| REVISED | 2011 |
|---------|------|



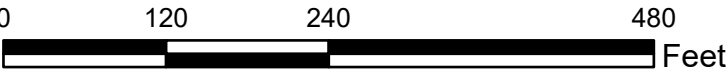


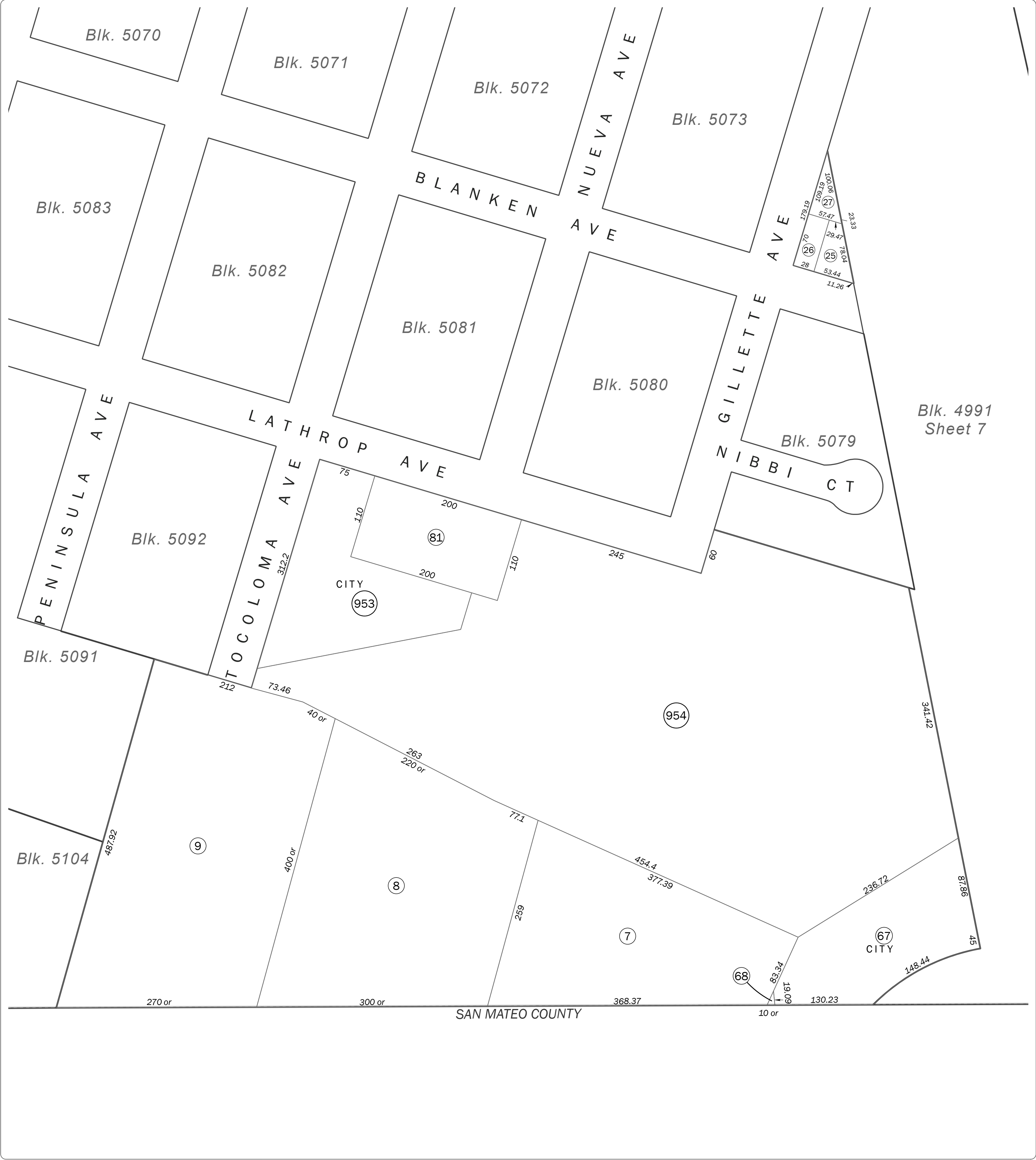
SAN FRANCISCO CITY & COUNTY
ASSESSOR'S BLOCK MAP

DISCLAIMER: THIS MAP WAS PREPARED FOR ASSESSMENT
PURPOSES ONLY. ASSESSOR'S PARCELS MAY NOT COMPLY
WITH LOCAL LOT-SPLIT OR BUILDING SITE ORDINANCES.



| | |
|---------|------|
| REVISED | 2011 |
|---------|------|



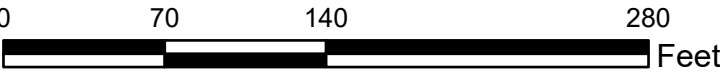


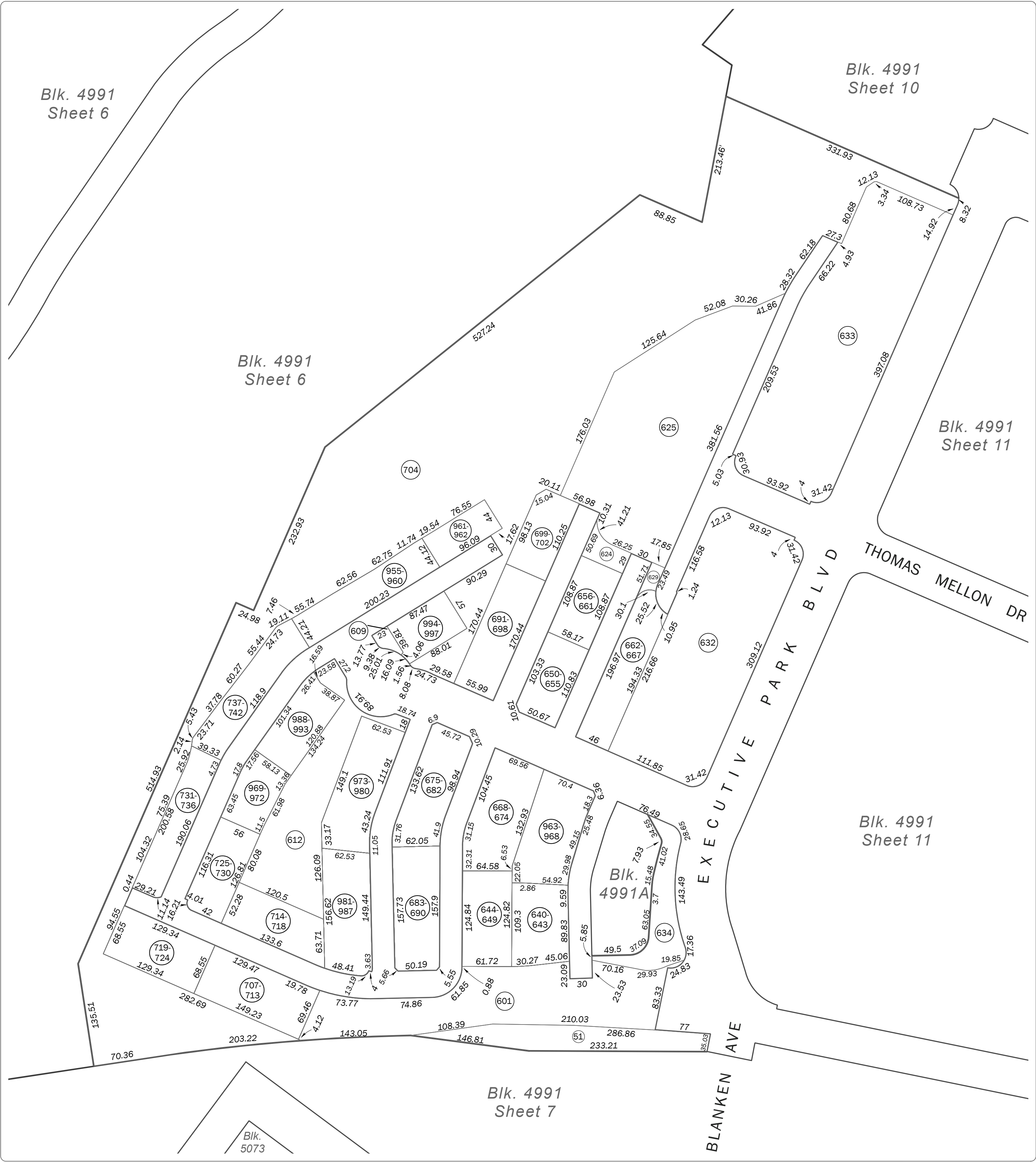
**SAN FRANCISCO CITY & COUNTY
ASSESSOR'S BLOCK MAP**

DISCLAIMER: THIS MAP WAS PREPARED FOR ASSESSMENT PURPOSES ONLY. ASSESSOR'S PARCELS MAY NOT COMPLY WITH LOCAL LOT-SPLIT OR BUILDING SITE ORDINANCES.



| | |
|---------|------|
| REVISED | 2011 |
|---------|------|

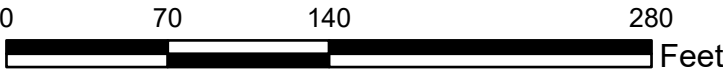
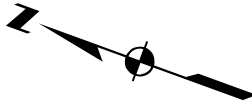


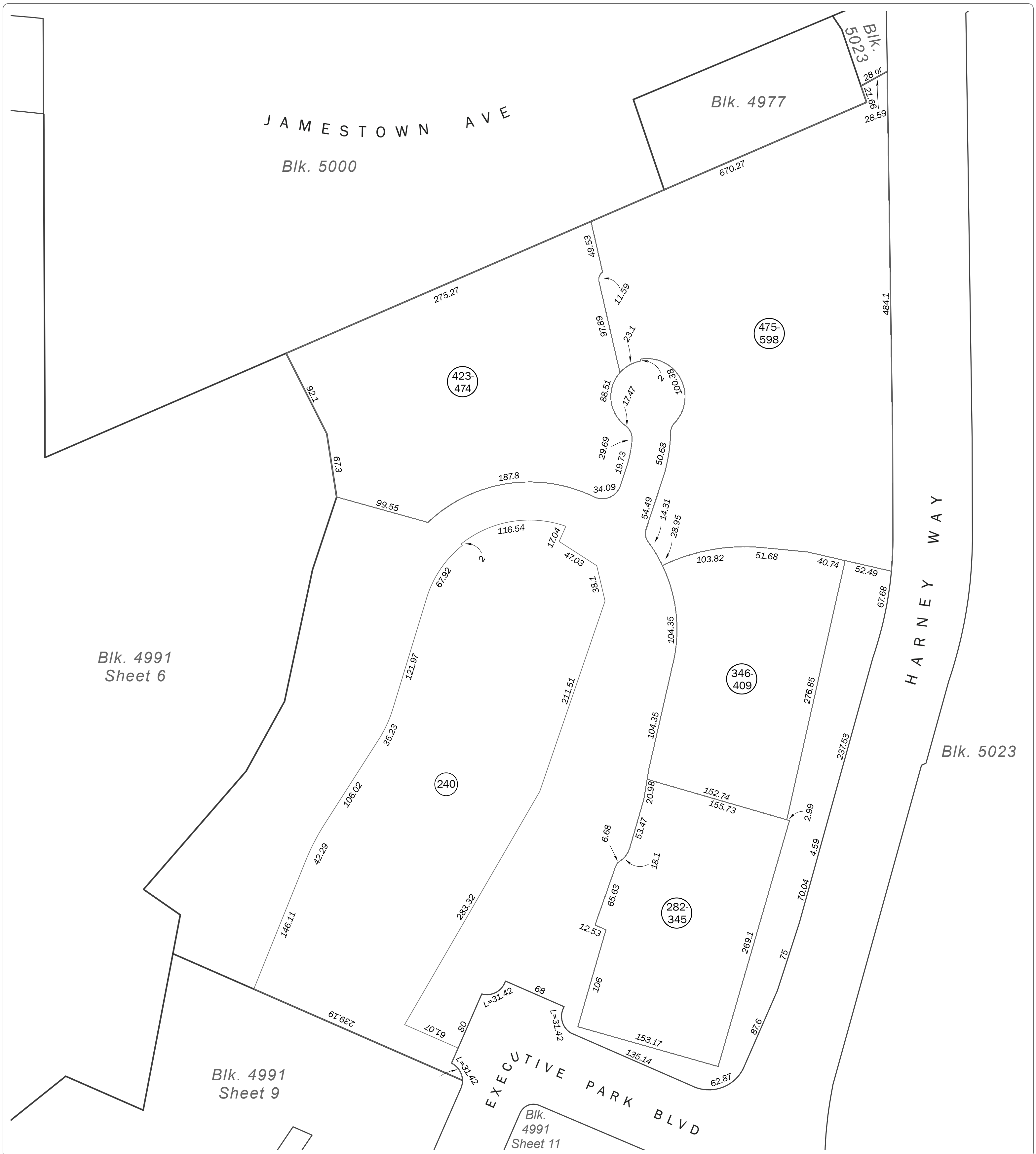


**SAN FRANCISCO CITY & COUNTY
ASSESSOR'S BLOCK MAP**

DISCLAIMER: THIS MAP WAS PREPARED FOR ASSESSMENT PURPOSES ONLY. ASSESSOR'S PARCELS MAY NOT COMPLY WITH LOCAL LOT-SPLIT OR BUILDING SITE ORDINANCES.

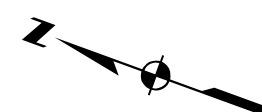
| | |
|---------|------|
| REVISED | 2011 |
|---------|------|



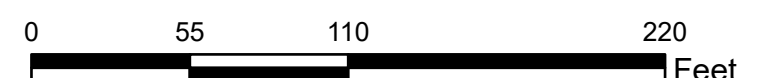


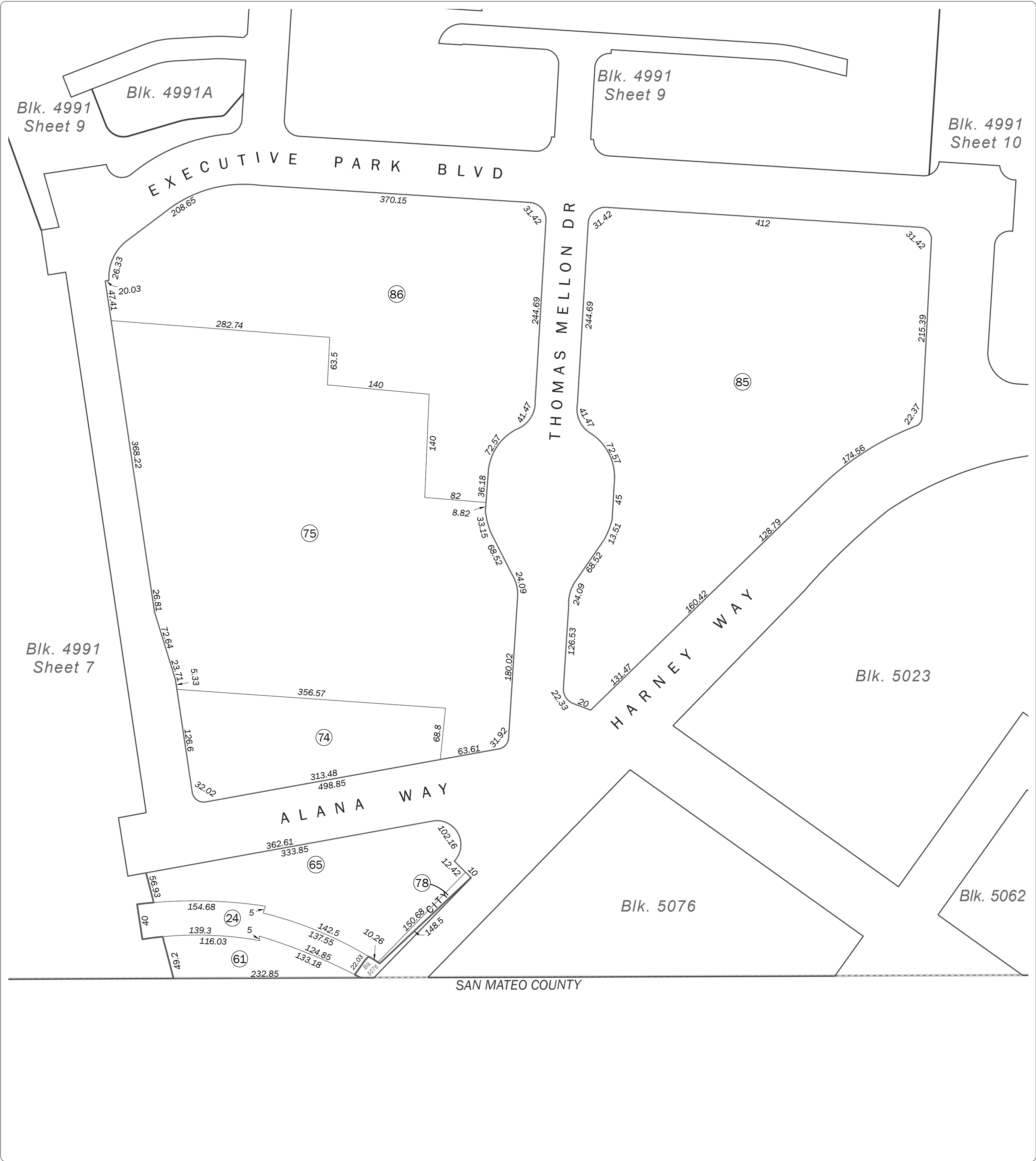
SAN FRANCISCO CITY & COUNTY ASSESSOR'S BLOCK MAP

DISCLAIMER: THIS MAP WAS PREPARED FOR ASSESSMENT PURPOSES ONLY. ASSESSOR'S PARCELS MAY NOT COMPLY WITH LOCAL LOT-SPLIT OR BUILDING SITE ORDINANCES.



| | |
|---------|------|
| REVISED | 2011 |
|---------|------|



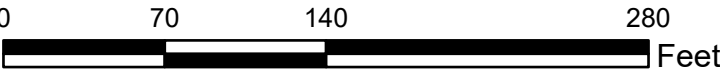


**SAN FRANCISCO CITY & COUNTY
ASSESSOR'S BLOCK MAP**

DISCLAIMER: THIS MAP WAS PREPARED FOR ASSESSMENT PURPOSES ONLY. ASSESSOR'S PARCELS MAY NOT COMPLY WITH LOCAL LOT-SPLIT OR BUILDING SITE ORDINANCES.



| | |
|---------|------|
| REVISED | 2011 |
|---------|------|



Revision History

| From Lot | Change | To Lot | Year |
|-------------------|--------|---------|------|
| 5F | into | 6 | 1951 |
| 63 | into | 83-84 | 1981 |
| 79-80 | into | 85, 87 | 1982 |
| 87 | into | 88-90 | 1994 |
| 29, 31-34, 38, 44 | into | 245-246 | 1998 |
| 112 | into | 270-271 | 2001 |
| 113 | into | 274-275 | 2001 |
| 114 | into | 272-273 | 2001 |
| 40 | into | 255-267 | 2001 |
| 111 | into | 268-269 | 2002 |
| 245 | into | 276-277 | 2002 |
| 88, 90 | into | 234-241 | 2002 |
| 89, 234 | into | 278-279 | 2002 |
| 121 | into | 280-281 | 2003 |
| 235 | into | 282-345 | 2004 |
| 236 | into | 346-409 | 2004 |
| 115 | into | 419-420 | 2005 |
| 237-238 | into | 418 | 2005 |
| 255 | into | 410-411 | 2005 |
| 256 | into | 412-413 | 2005 |
| 258 | into | 416-417 | 2006 |
| 241, 279 | into | 599-634 | 2008 |
| 615 | into | 683-690 | 2011 |
| 616 | into | 675-682 | 2011 |
| 617 | into | 691-698 | 2011 |
| 618 | into | 699-702 | 2011 |