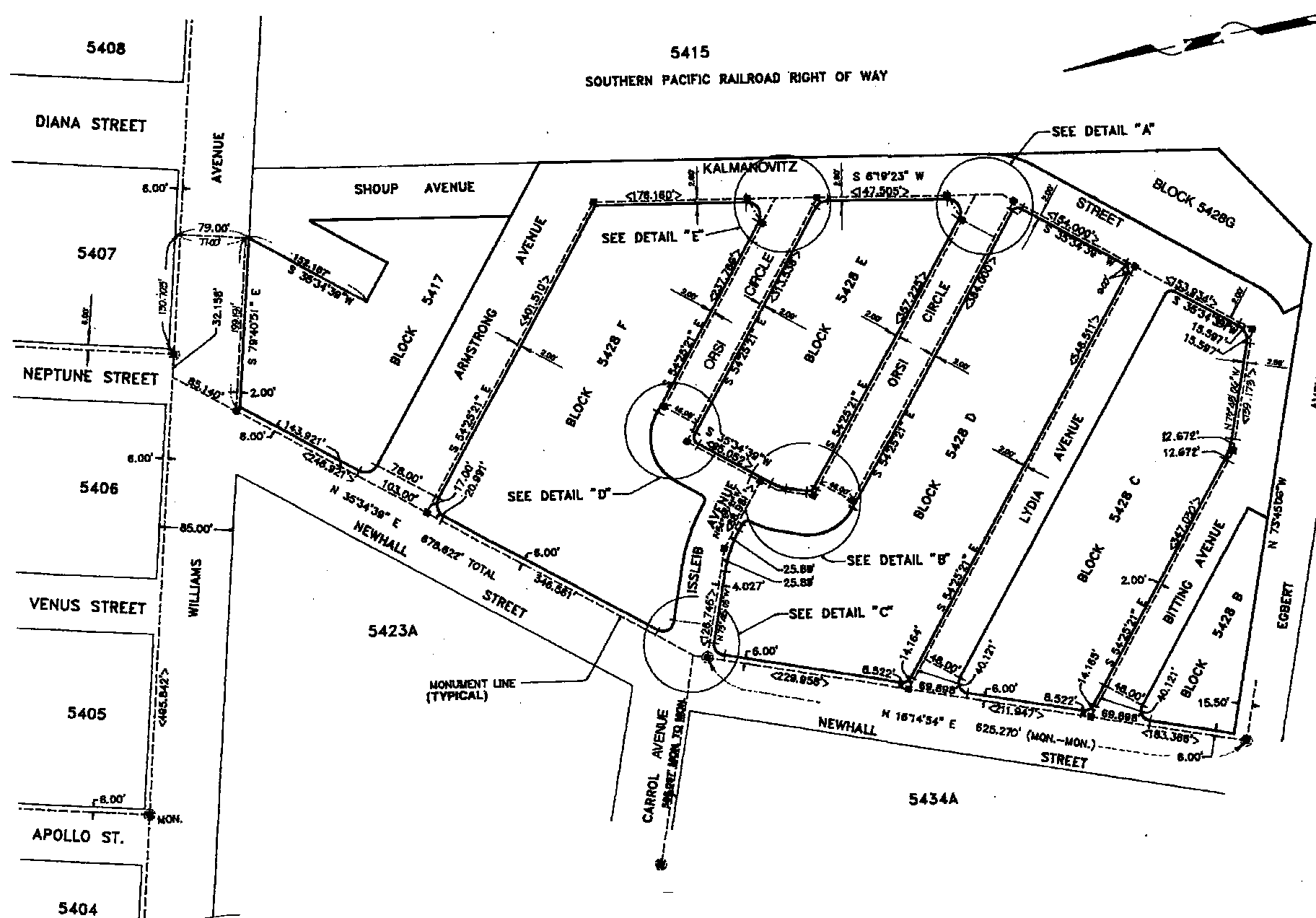


ASSESSOR-RECORDER'S OFFICE

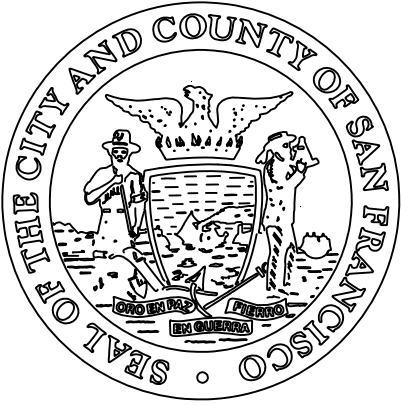
5428A

SHEET 1

Revised 1997

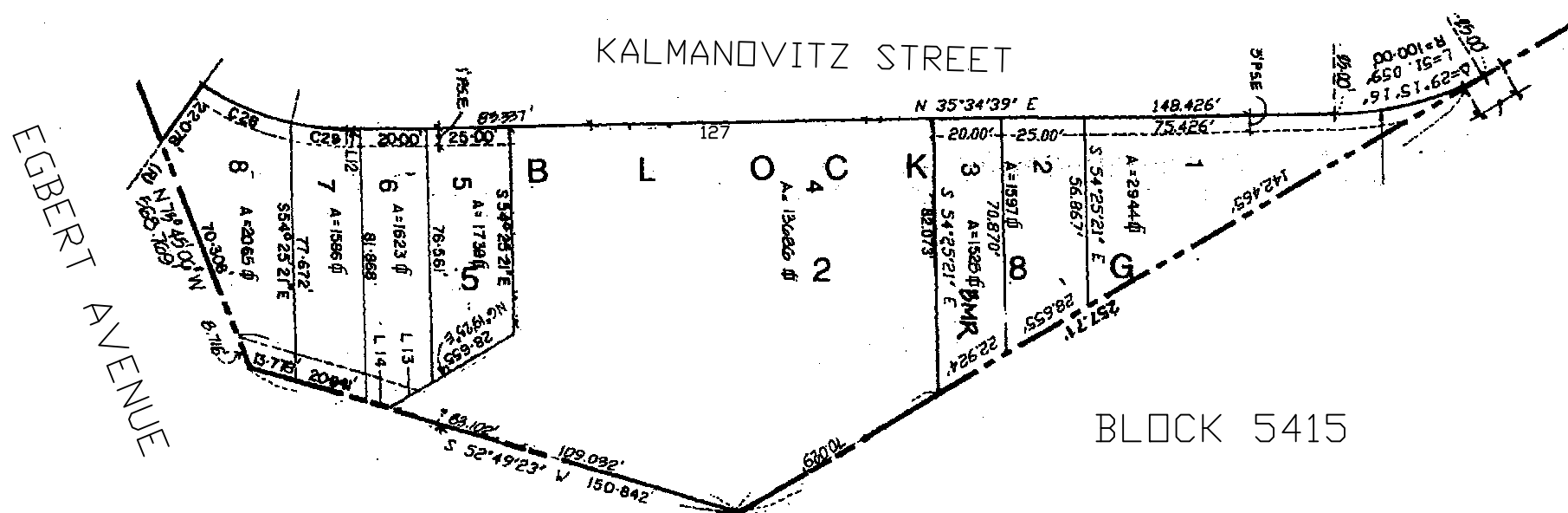
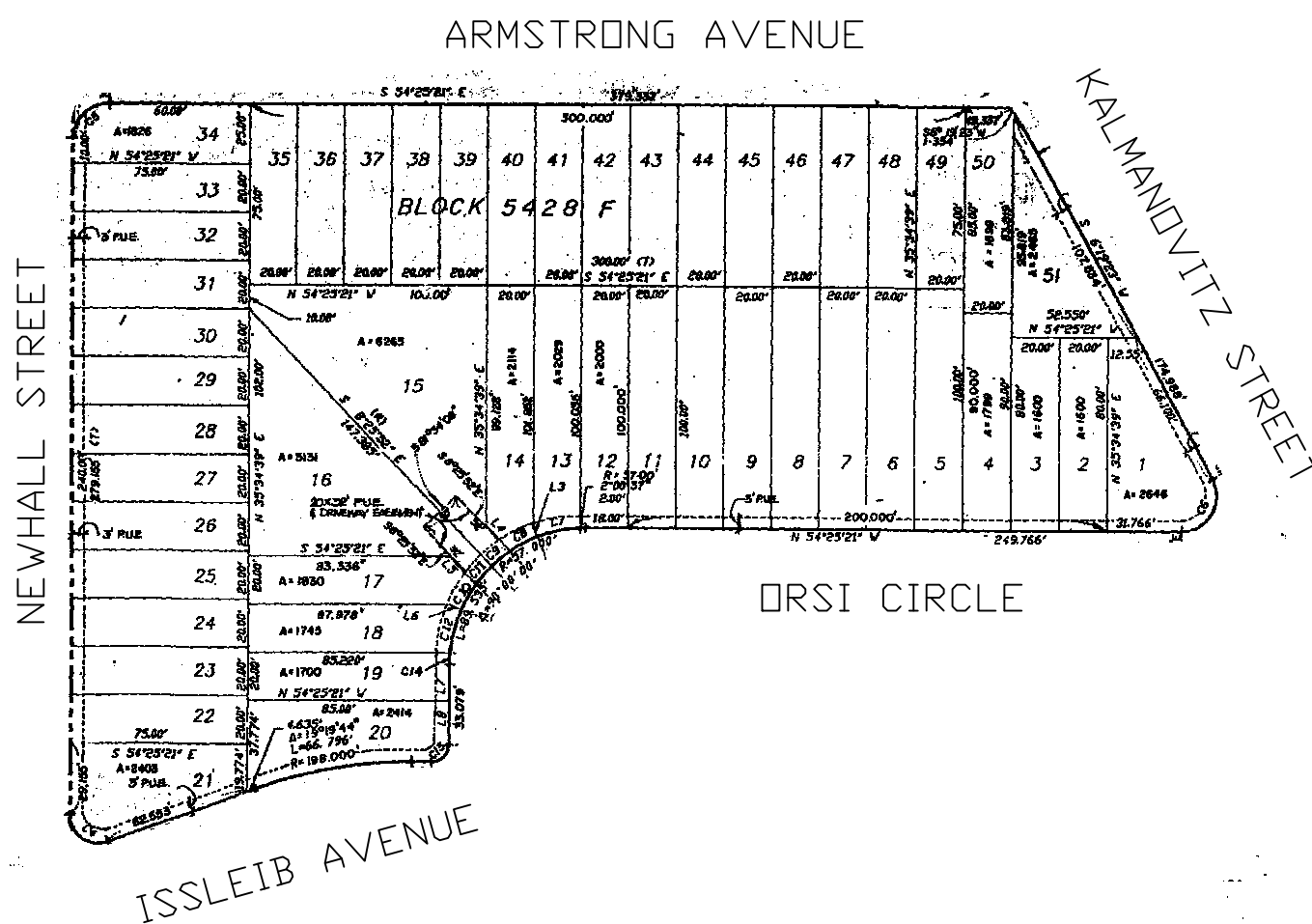
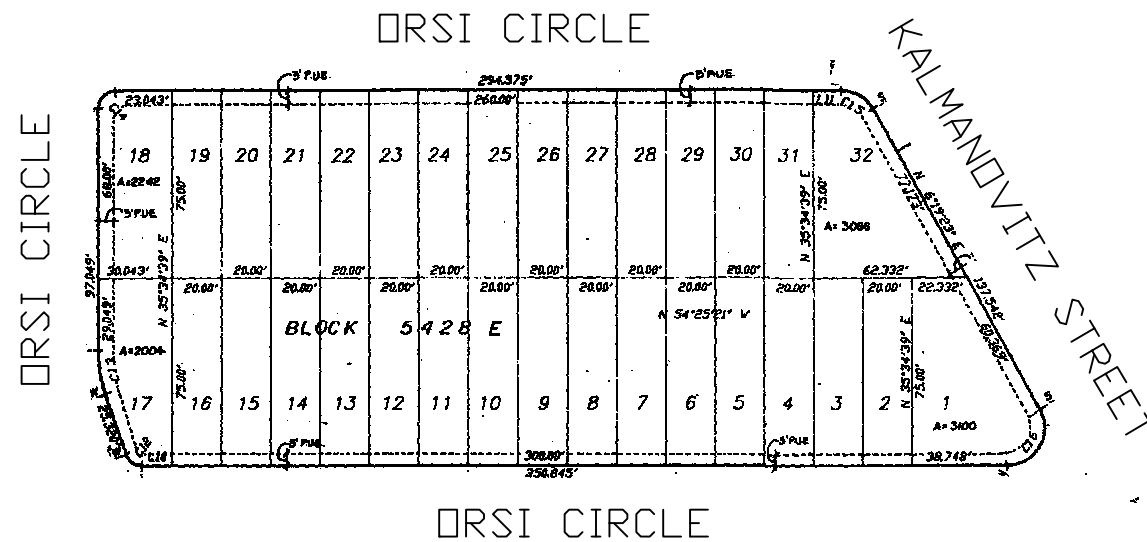


Portola Place being a resubdivision of Block 5417 Lot 9 into Lots 10 to 34 &
Block 5422A Lot 2 & Block 5428A Lots 2 & 3 & 4 & 5 & 9 deleted and recreated into
Block 5428B Lots 1 to 9
Block 5428C Lots 1 to 45
Block 5428D Lots 1 to 62
Block 5428E Lots 1 to 32
Block 5428F Lots 1 to 51
Block 5428G Lots 1 to 8



5428E & 5428F & 5428G SHEET 3

Revised 1997

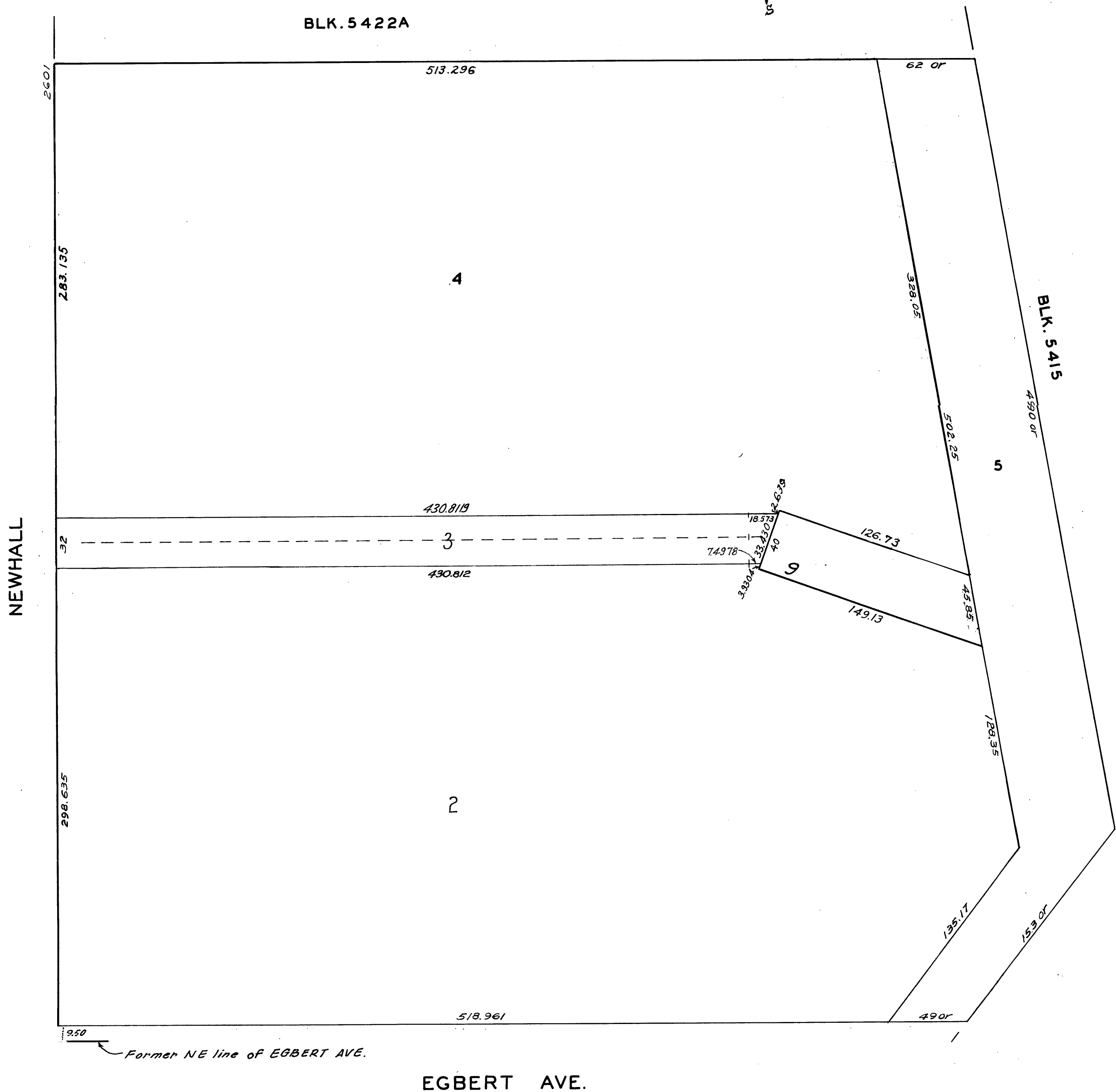
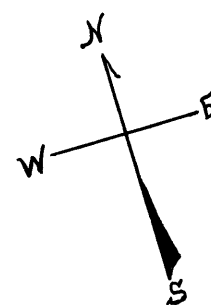


ASSESSOR-RECORDER'S OFFICE

LOTS MERGED CITY 8

| LOTS | INTO LOT | 19— |
|---|------------|-----|
| 1, 2A, 2B & 5A | SHOUP AVE. | '41 |
| 1A, 6/B | 4 | '47 |
| LOTS 3 & 9 FROM S.B.E. INTO PRIVATE - '92 | | |

REVISED '71
" '92



5428B & 5428C & 5428D

SHEET 2
Revised 1977

LYDIA AVENUE

