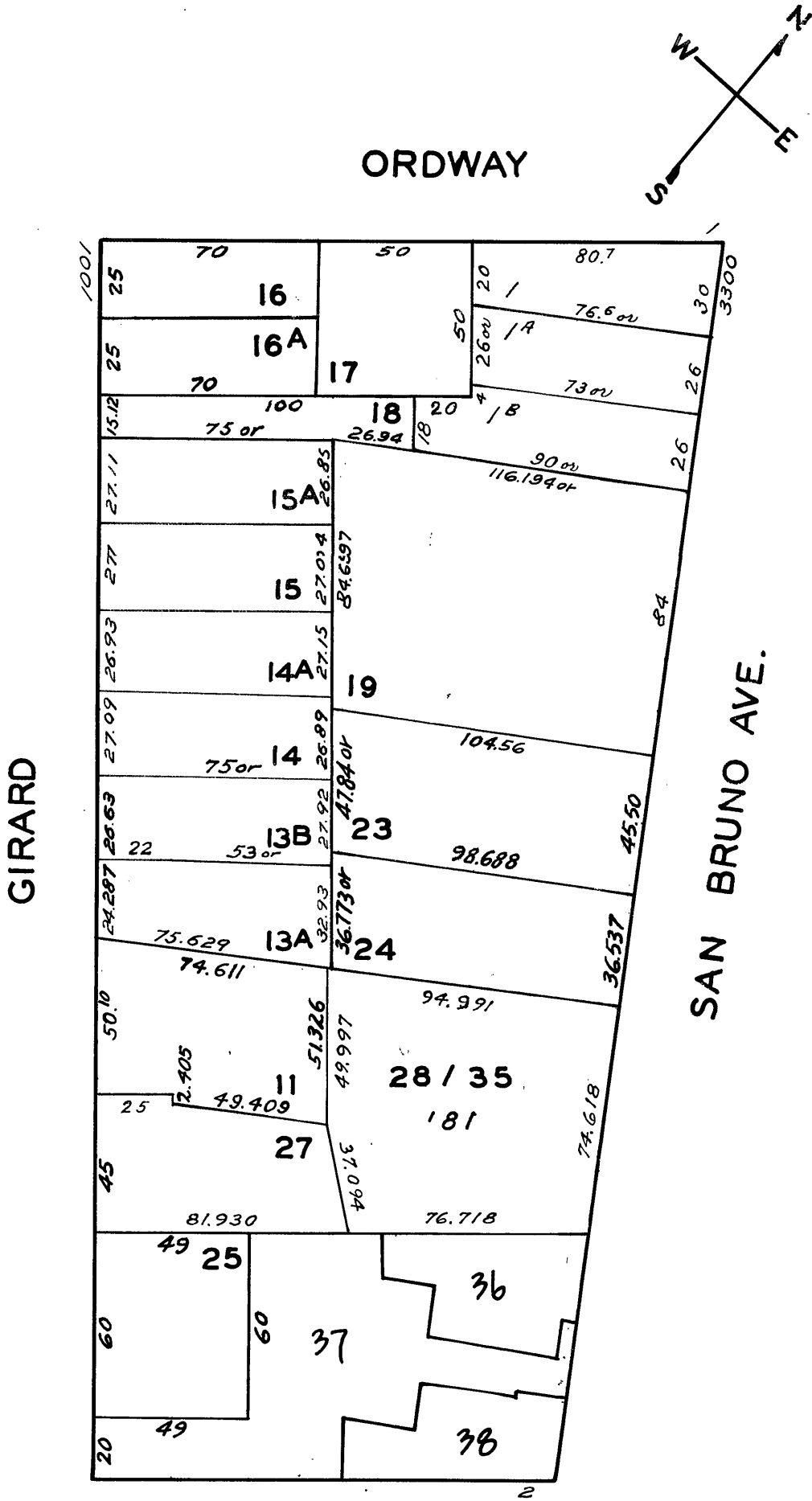


6172

LOTS MERGED			
LOTS	INTO LOT	19	—
12	11	'47	
13	2	'47	
3A & 3B	3	'47	
7	6	'1952'	
2A, 3, 15B	2	'56	

PAUL RES HD ASSN BLK 1  
PAUL TR HD ASSN BLK 27

REVISED	'61
REVISED	'62
"	'77
"	'81
"	'94



3336 SAN BRUNO AVE.		
A CONDOMINIUM		
LOT NO.	UNIT NO.	% COMMON AREA
28	101	12.29
29	102	12.73
30	103	12.38
31	104	12.29
32	201	12.29
33	202	13.26
34	203	12.89
35	204	11.87

WARD

