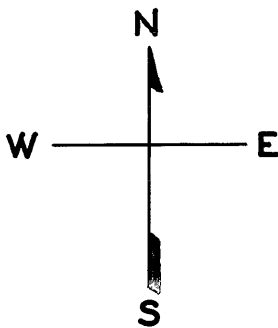
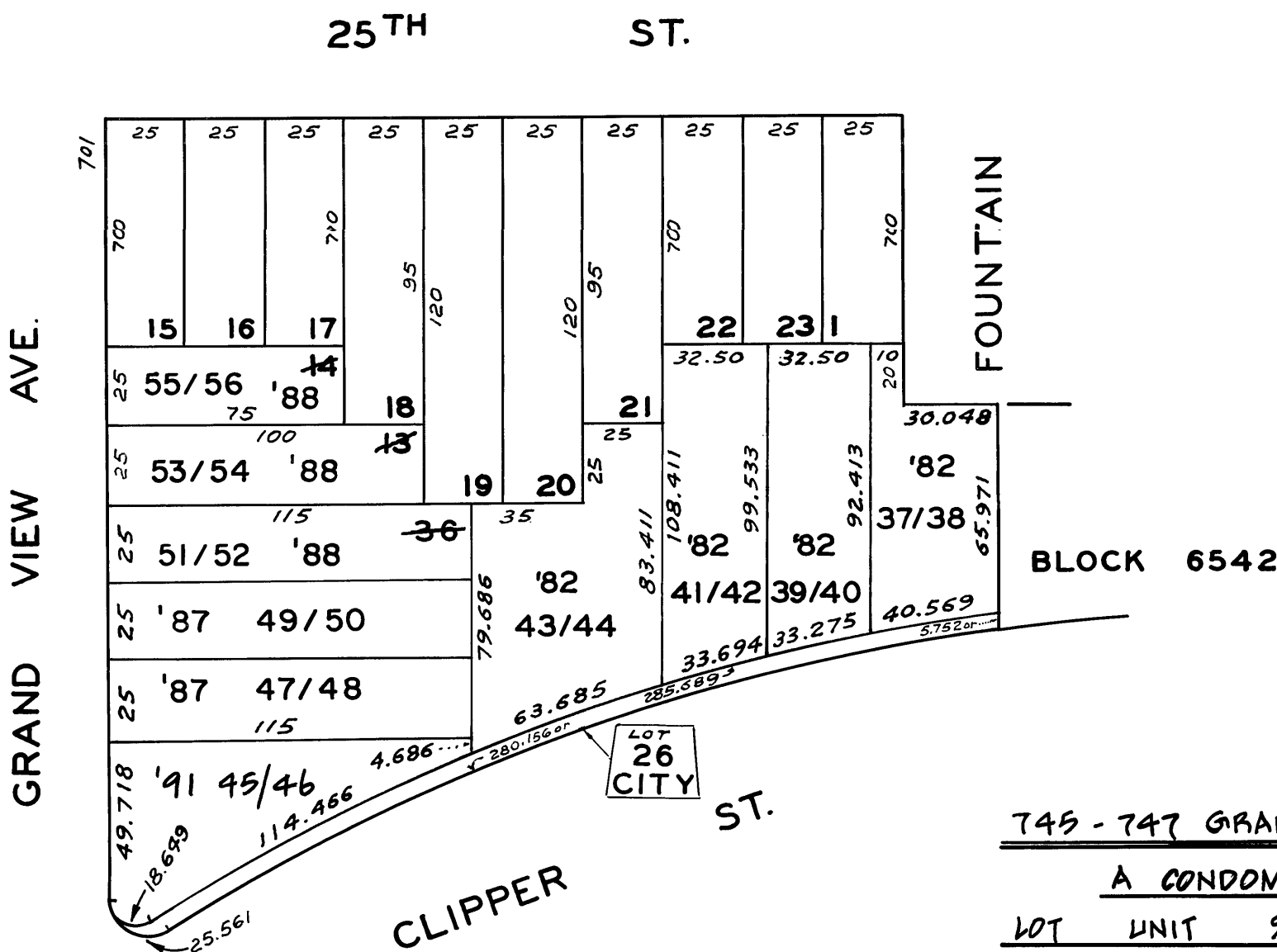


NOE GARDEN HD. UN.
BLK. 23

REVISED '61
" '79
" '82
" '87
" '88
" '91



LOT	UNIT	% COMM. AREA	CONDOMINIUMS
51	1	54	717-719 GRAND VIEW AVE
52	2	46	
53	1	54	709-711 GRAND VIEW AVE
54	2	46	
55	1	54	705-707 GRAND VIEW AVE
56	2	46	



745 - 747 GRANDVIEW AVE.

A CONDOMINIUM

LOT	UNIT	% COMM. AREA
45	1	47
46	2	53

LOT NO.	UNIT NO.	% COMMON AREA	CONDOMINIUMS
37	1	48.9	750, 752 CLIPPER ST.
38	2	51.1	
39	1	53.4	760, 762 CLIPPER ST.
40	2	46.6	
41	1	53.4	770, 772 CLIPPER ST.
42	2	46.6	
43	1	54	780, 782 CLIPPER ST.
44	2	46	

47	1	54	741-743 GRAND VIEW AVE
48	2	46	
49	1	54	735-737 GRAND VIEW AVE
50	2	46	