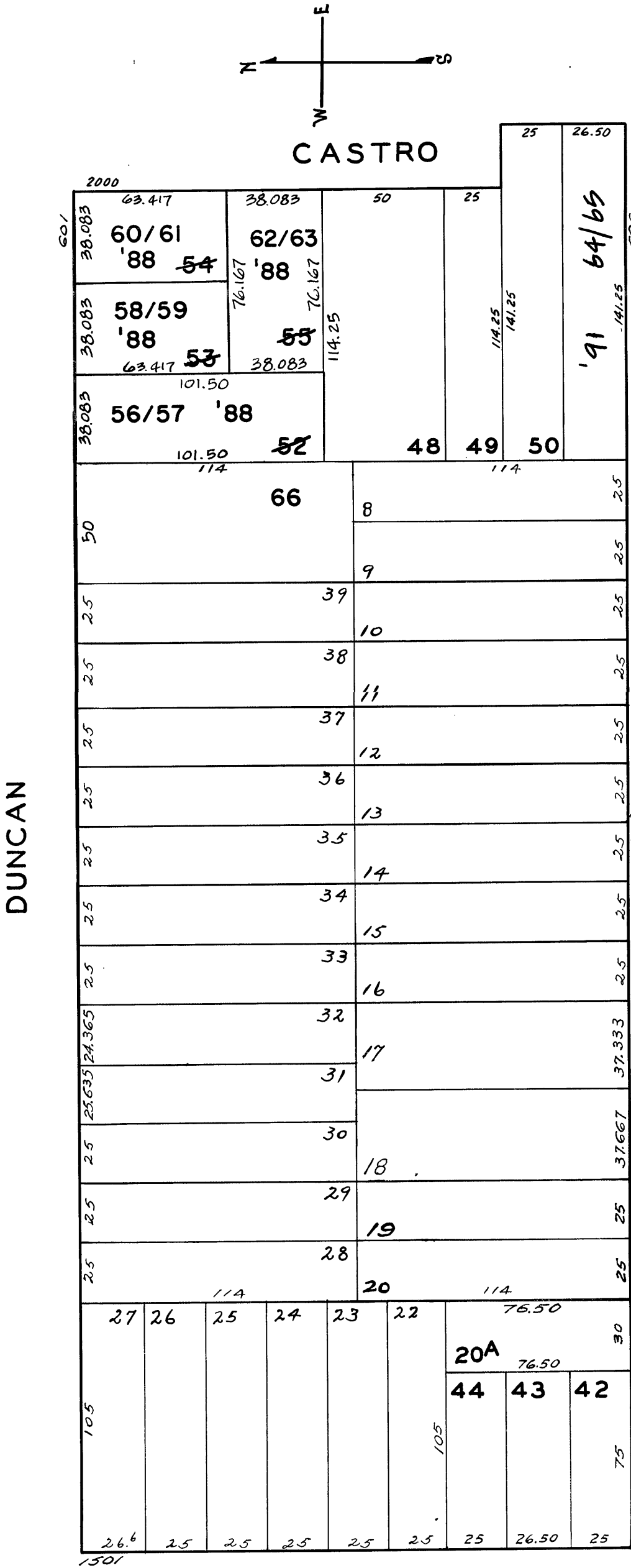


6604

© COPYRIGHT SAN FRANCISCO
CITY & COUNTY ASSESSOR 1995

HORNERS ADDN BLK 177

REVISED '60
" '66
" '87
" '88
" '91
" '93



28TH

2096 - 2098 CASTRO ST.

A CONDOMINIUM

LOT	UNIT	% COMM. AREA
64	2096	65.52
65	2098	34.48

LOT	UNIT	% COMM AREA	CONDOMINIUMS
56	613	49.92	613 — 615 DUNCAN ST
57	615	50.08	
58	607	51.22	607 — 609 DUNCAN ST
59	609	48.78	
60	601	51.57	601 — 603 DUNCAN ST
61	603	48.43	
62	2010	49.70	2010 — 2012 CASTRO ST
63	2012	50.30	