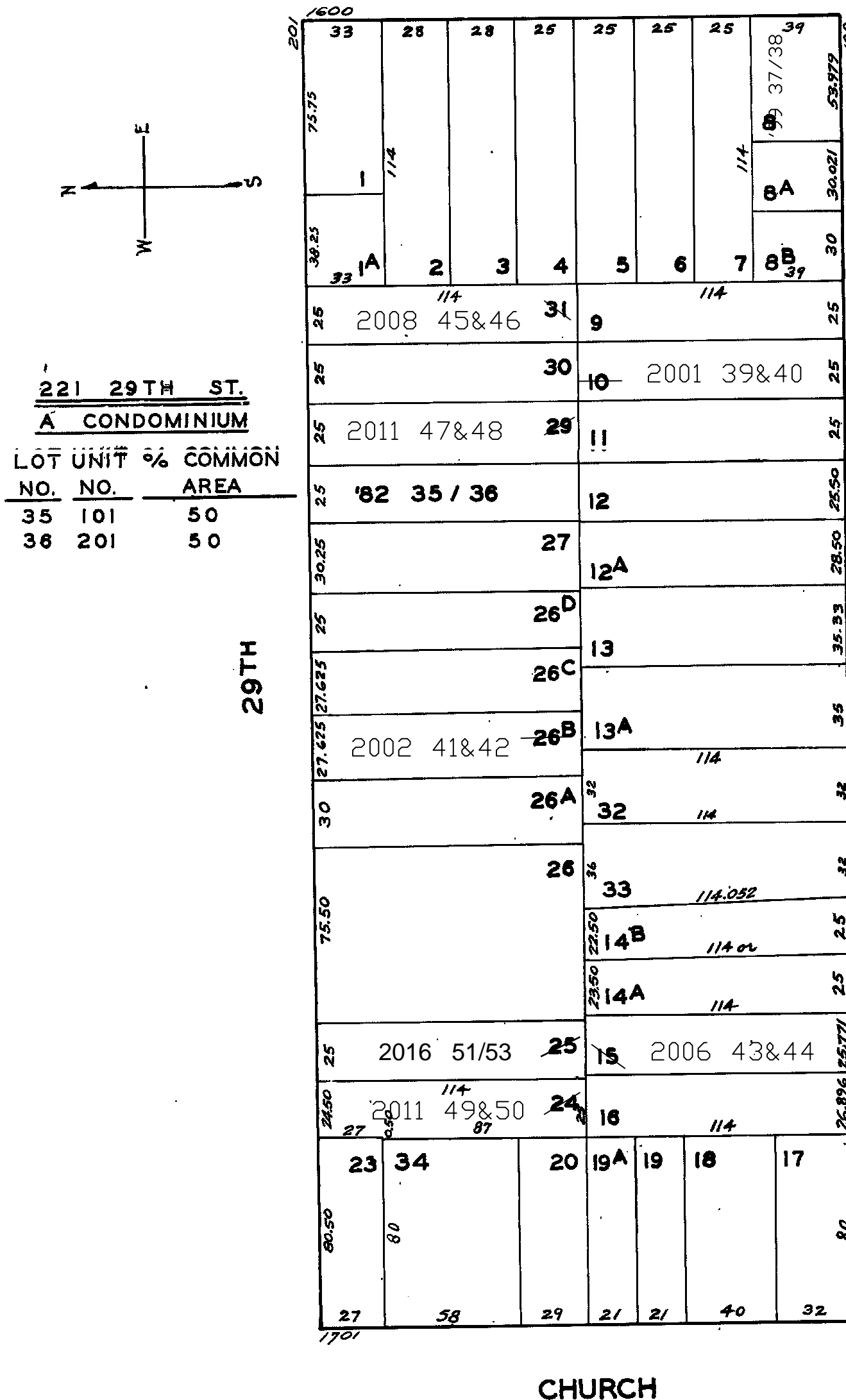


**REVISED '66**  
**" '78**  
**" '82**  
 Revised '99  
 Revised 2001  
 Revised 2002  
 Revised 2006  
 Revised 2008  
 Revised 2011  
**REVISED 2016**

© COPYRIGHT SAN FRANCISCO  
CITY & COUNTY ASSESSOR 1995

lot 8 into lots 37/38 for 1999 roll  
lot10 into lots39&40 for 2001 roll  
lot26B into lots41&42 for 2002 roll  
lot15 into lots43&44 for 2006 roll  
lot31 into lots45to46 for 2008 roll  
lot24 into lots49&50 for 2011 roll  
lot29 into lots47&48 for 2011 roll  
Lot 25 into lots 51 to 53 for 2016 roll

# DOLORES



1650 DOLORES ST & 100 DAY ST.

<u>A CONDOMINIUM</u>		
<u>LOT</u>	<u>UNIT</u>	<u>% COMM. AREA</u>
37	100	42.55
38	1650	57.45

<u>116-116A DAY ST.</u>		
<u>A CONDOMINIUM</u>		
<u>LOT</u>	<u>UNIT</u>	<u>% COMM. AREA</u>
39	116	57.13
40	116A	42.87

<u>251-253 29TH ST.</u>		
<u>A CONDOMINIUM</u>		
<u>LOT</u>	<u>UNIT</u>	<u>% COMM. AREA.</u>
41	251	50
42	253	50

<u>178-180 DAY ST.</u>		
<u>A CONDOMINIUM</u>		
<u>LOT</u>	<u>UNIT</u>	<u>% COMM. AREA</u>
43	178	30
44	180	70

<u>215-215A 29TH ST.</u>		
<u>A CONDOMINIUM</u>		
<u>LOT</u>	<u>UNIT</u>	<u>% COMM. AREA</u>
45	215	51.94
46	215A	48.06