

7115

LOTS MERGED

LOT 6 INTO LOT 7 - 1949
" 37 " " 36 - '52
" 41 " " 40 - '52
" 45 " " 44 - '52

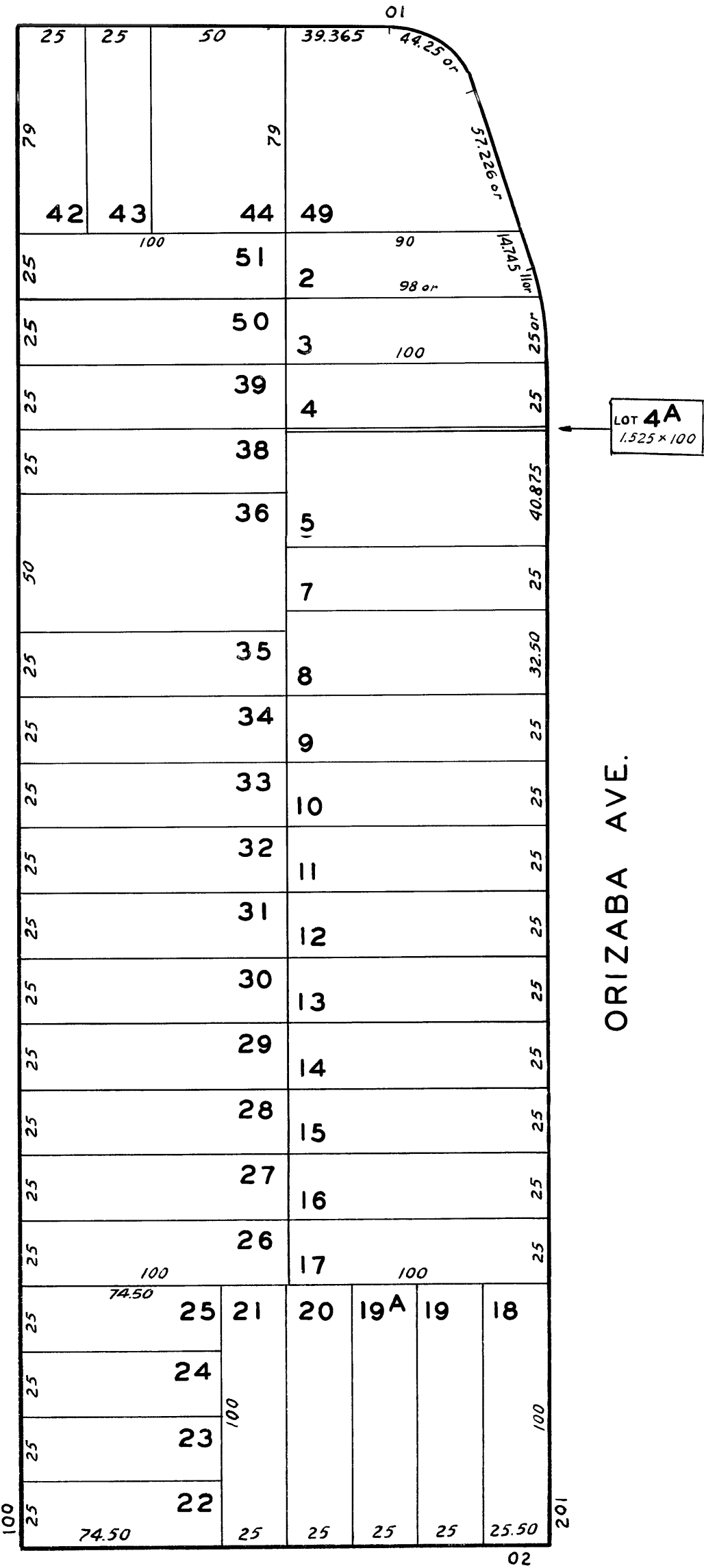
CITY LAND ASSN. BLK. 53

REVISED '58
" '78

RANDOLPH

BRIGHT

ORIZABA AVE.



STANLEY