

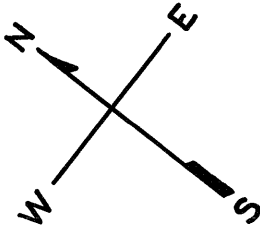
Lots1&2 lot line adjustment per DPW-BSM John Martin approval8/14/02
LOT 6 FROM CITY INTO PRIVATE - 1989

© COPYRIGHT SAN FRANCISCO
CITY & COUNTY ASSESSOR 1995

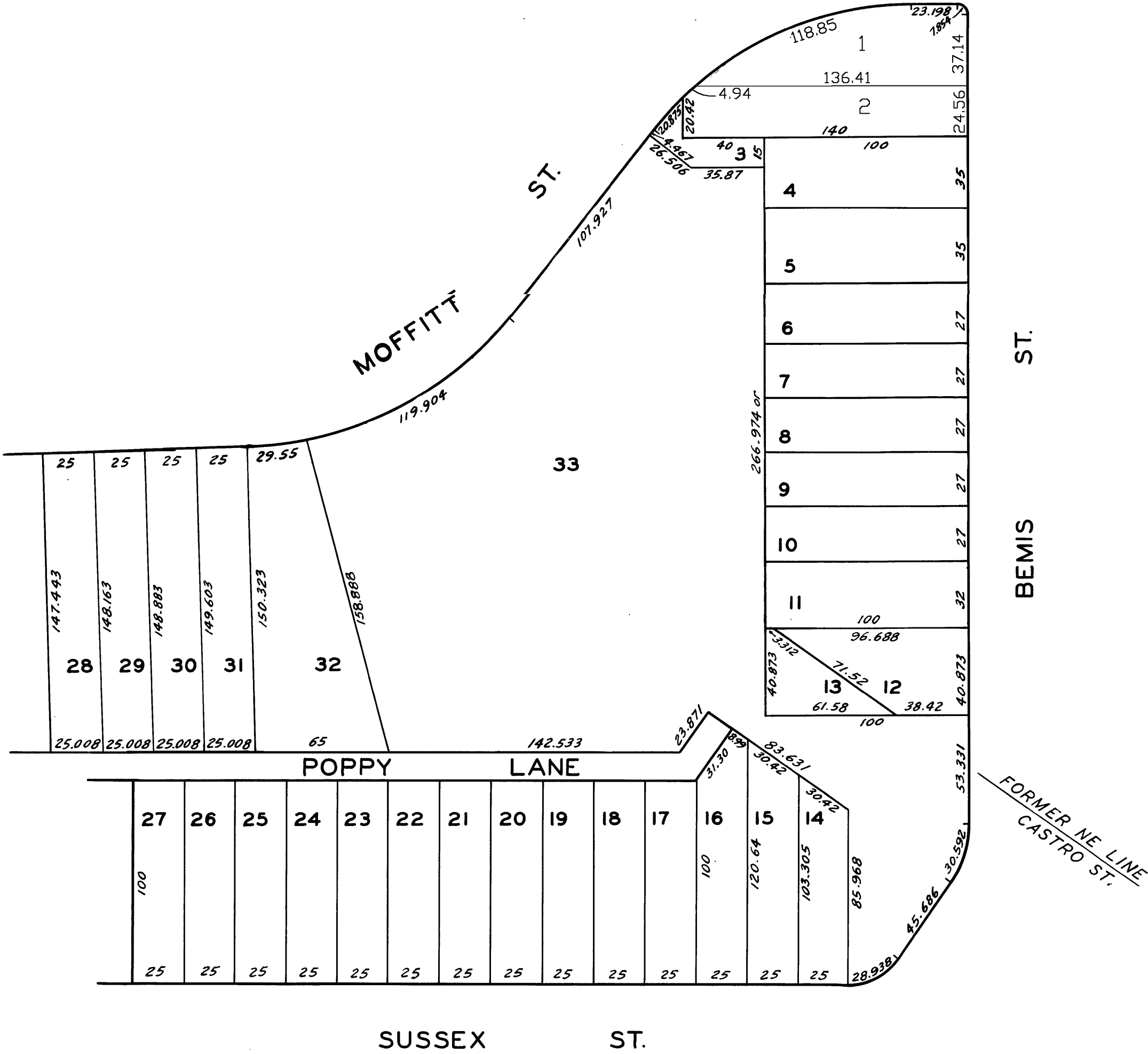
7548

FAIRMONT TRACT BLK. 32
FAIRMONT LAND ASSN. BLK. 32
MISSION & 30TH ST. HD. UNION BLK. 32
GLEN PARK TERRACE & CASTRO ST. ADDN. 6

REVISED 1989
Revised 2002



BLOCK 6713



ASSESSED 146,087 SQ. FT.
BLK. TOTAL 146,087 SQ. FT.