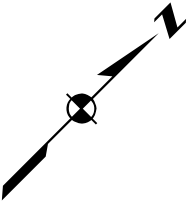
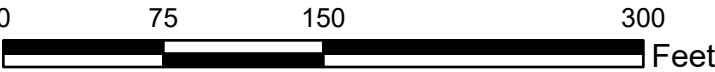


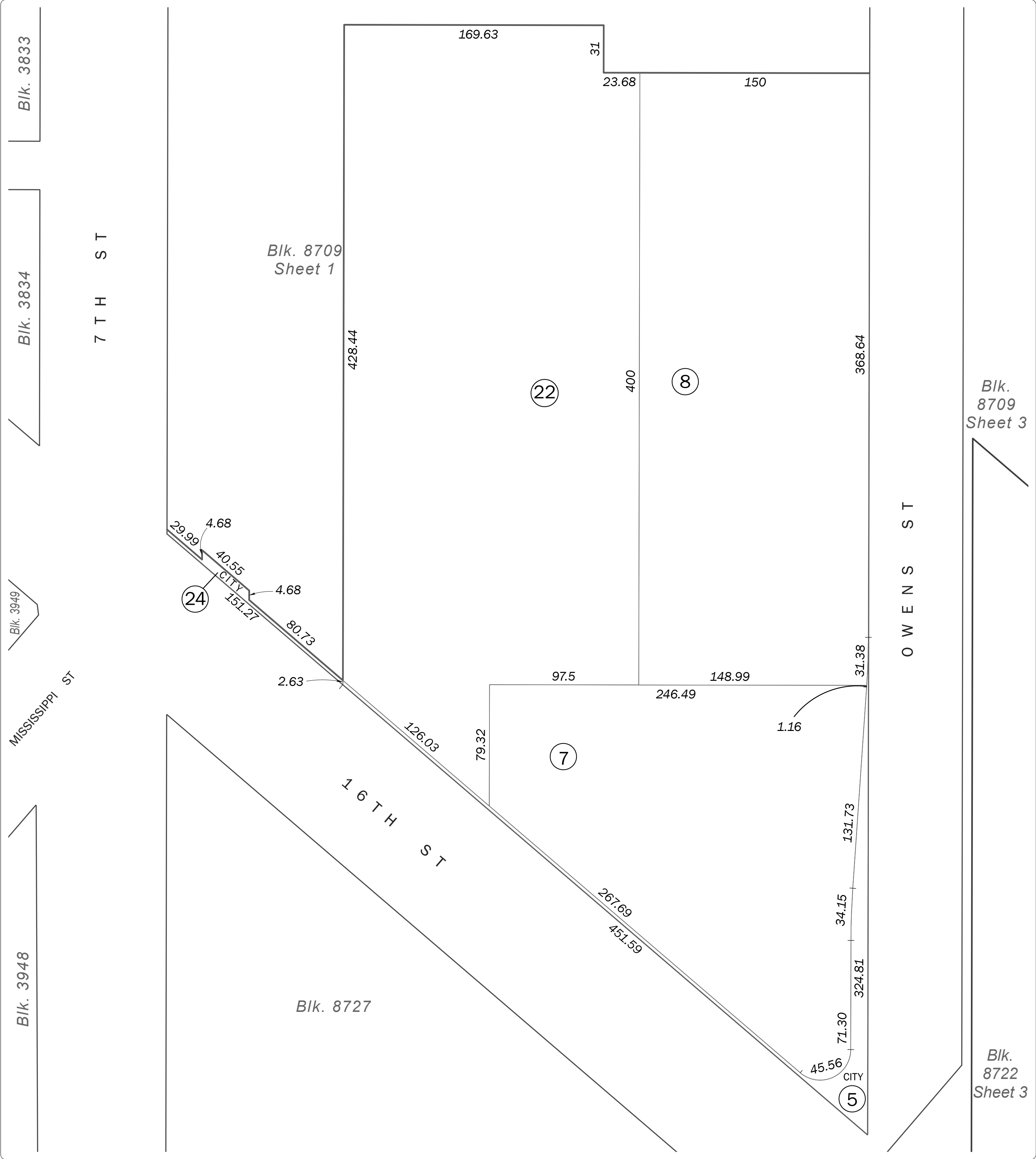
SAN FRANCISCO CITY & COUNTY
ASSESSOR'S BLOCK MAP

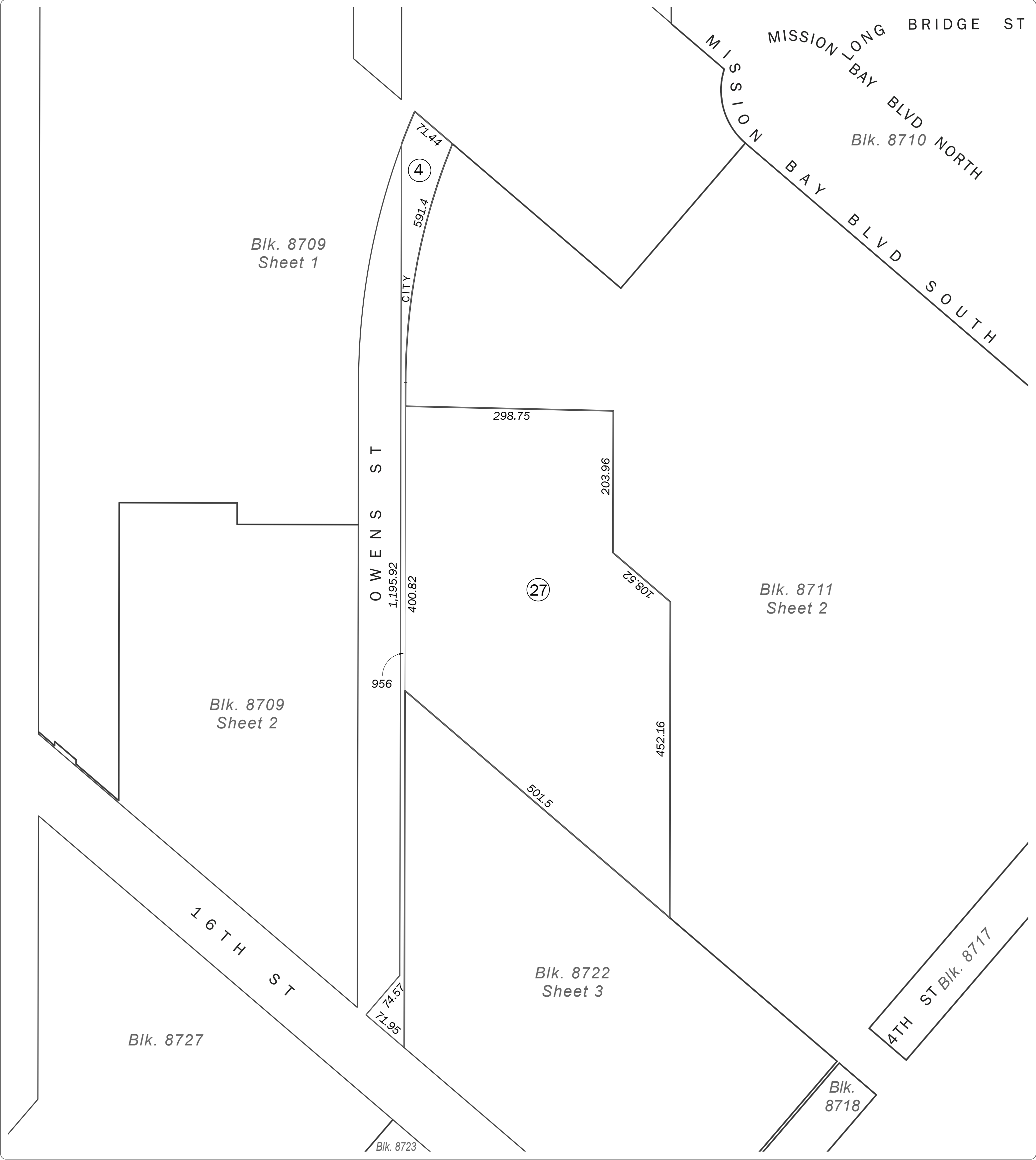
DISCLAIMER: THIS MAP WAS PREPARED FOR ASSESSMENT
PURPOSES ONLY. ASSESSOR'S PARCELS MAY NOT COMPLY
WITH LOCAL LOT-SPLIT OR BUILDING SITE ORDINANCES.



REVISED	2023
---------	------







Revision History

From Lot	Change	To Lot	Year
Blk. 3809/4, 7, 3819/2-3, 3822/2-3, 3832/2-3, 3835/2, 4-5, 3852/2	into	Blk. 8709/1-4, 11-12, Blk. 8726/1-2	2001
1	into	5-10, 13	2003
6, 9, 10, 13	into	15-24	2010
11, 8711/7	into	25-28, 8711/507-512	2023