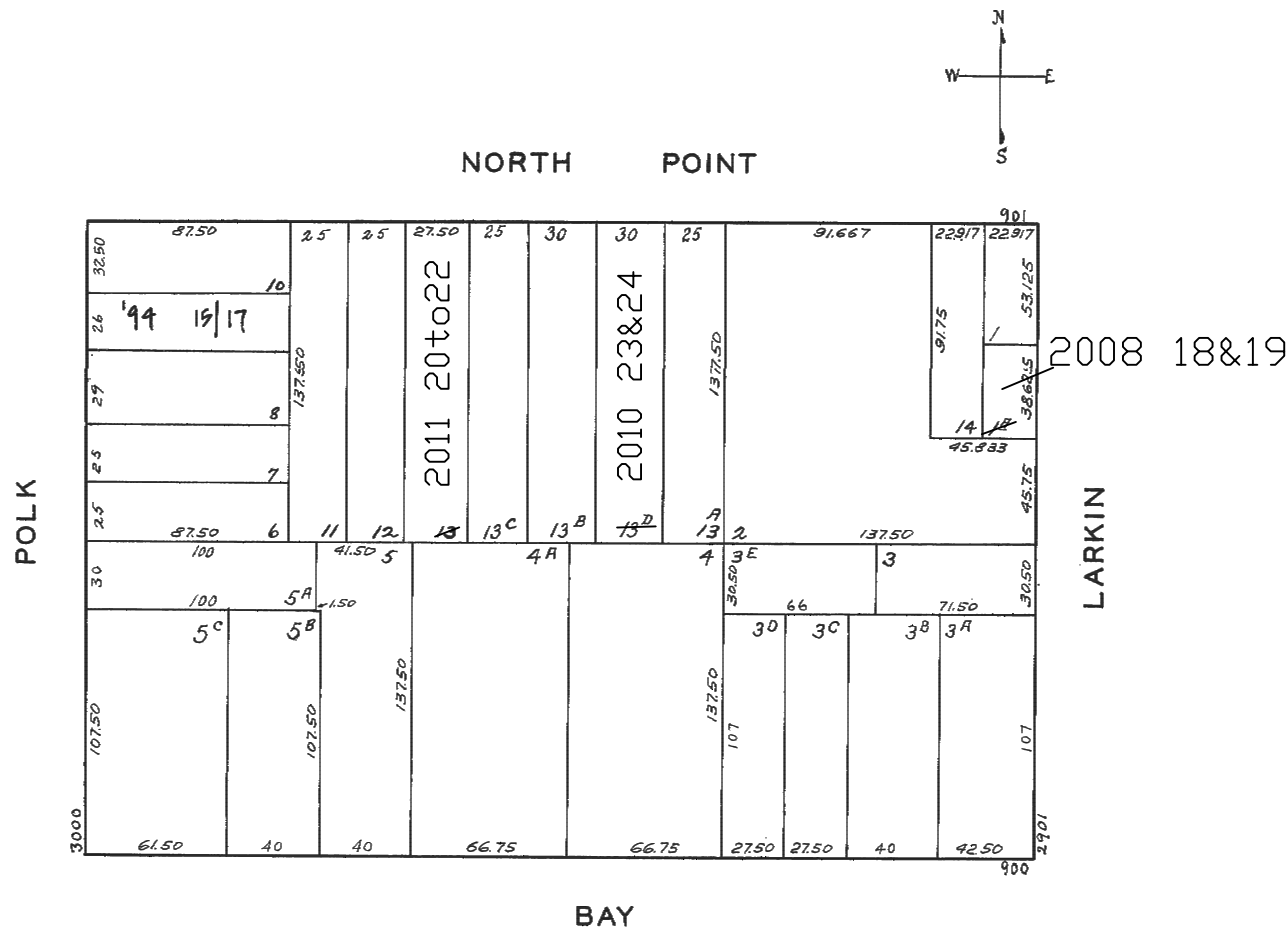


LOTS MERGED
Lots into Lot
" 9 " 9 - 1944
" 9A " 10 "

W A BLK. 31
REVISED 1986
" '94
Revised 2008
Revised 2010
Revised 2011

lot1A into lots18&19 for 2008 roll
lot13D into lots 23&24 for 2010 roll
lot13 into lots20to22 for 2011 roll



309B POLK ST.
A CONDOMINIUM

LOT	UNIT	% COMM. AREA
15	1	34.62
16	2	34.78
17	3	30.60