

Lot 2 merged with lot 1-44  
" 10-11 " " 12-  
" 13-16 " " 14-  
" 18-23 " " 17-  
" 31 " " 21-  
" 19/20 " " 17/18 30

lot28 into lots43&44 for 1997 roll  
lot7 into lots66to71 for 1998 roll  
lot34 into lots49&50 for 2001 roll

© COPYRIGHT SAN FRANCISCO  
CITY & COUNTY ASSESSOR 1995

lot39 into lot51&52 for 2005 roll  
lot3 into lots47&48 for 2006 roll

Lot 35 into lots 53 to 55 for 2015 roll  
Lot 33 into lots 56 & 57 for 2017 roll

W A BLK. 474

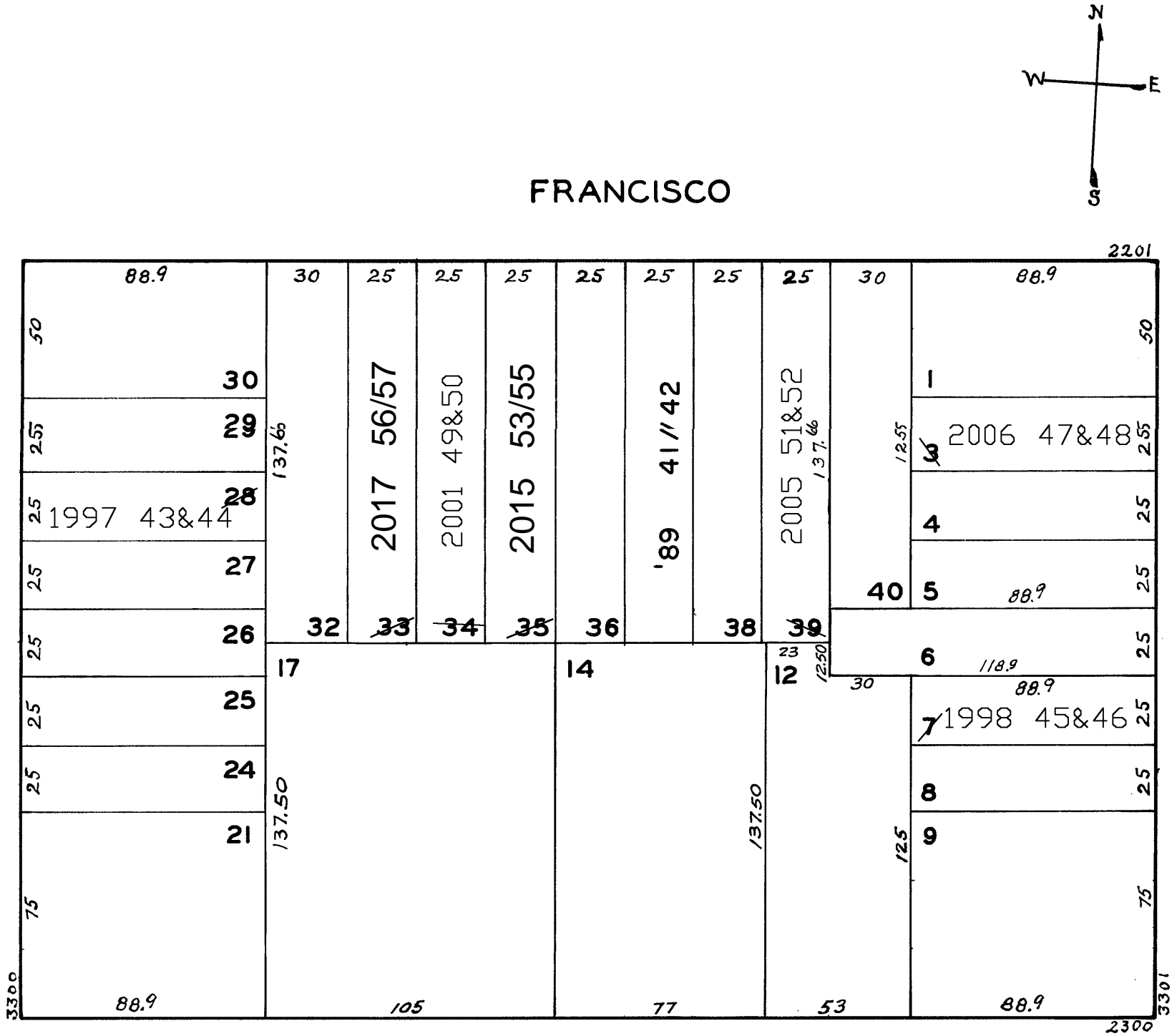
REVISED '89

Revised 1997  
Revised 1998  
Revised 2001  
Revised 2005  
Revised 2006

REVISED 2015

REVISED 2017

DIVISADERO



CHESTNUT

2243-2245 FRANCISCO ST.

A CONDOMINIUM		
LOT	UNIT	% COMM. AREA
41	2243	47.58
42	2245	52.42

2261-2263 FRANCISCO ST.

A CONDOMINIUM		
LOT	UNIT	% COMM. AREA
49	2261	48.00
50	2263	52.00

3342-3344 DIVISADERO ST.

A CONDOMINIUM		
LOT	UNIT	% COMM. AREA
43	3342	52.82
44	3344	47.18

3327-3329 SCOTT ST.

A CONDOMINIUM		
LOT	UNIT	% COMM. AREA
45	3327	48
46	3329	52

2231-2233 FRANCISCO ST.

A CONDOMINIUM		
LOT	UNIT	% COMM. AREA
51	2231	50
52	2233	50

3351-3353 SCOTT ST.

A CONDOMINIUM		
LOT	UNIT	% COMM. AREA
47	3351	52.5
48	3353	47.5