

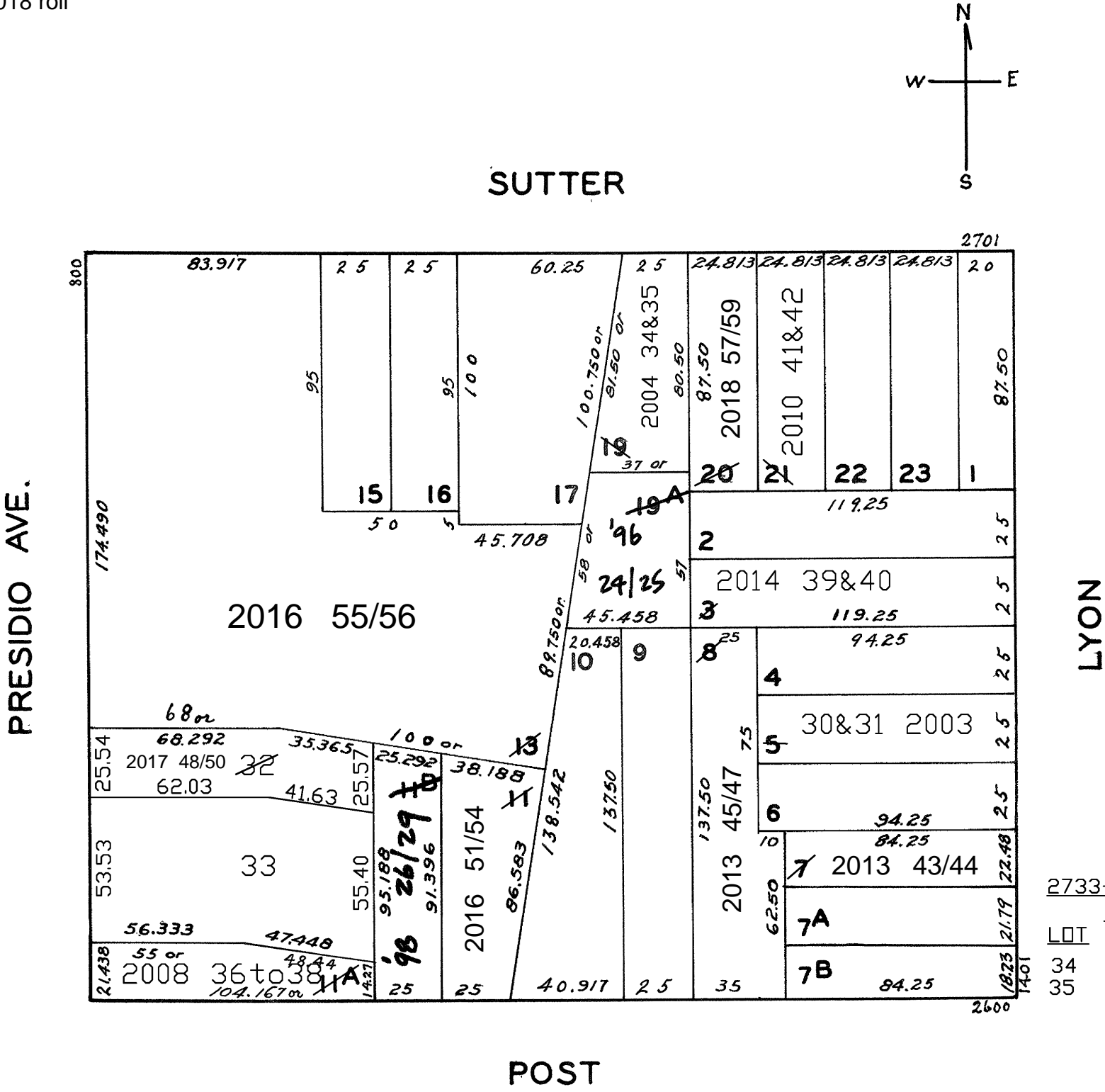
Revised '96

" '98

Revised 2003
Revised 2004
Revised 2008
Revised 2010
Revised 2014
REVISED 2013
REVISED 2016
REVISED 2017
REVISED 2018

LOTS MERGED

LOTS 14 INTO LOT 13 1943
" 18 " " 17 44
lot5 into lots30&31 for 2003 roll
lot12 into lots32&33 for 2003 roll
lot19 into lots34&35 for 2004 roll
lot11A into lots36to38 for 2008 roll
lot21 into lots41&42 for 2010 roll
lot3 into lots39&40 for 2014 roll
Lot 7 into lots 43 & 44 for 2013 roll
Lot 8 into lots 45 to 47 for 2013 roll
Lot 11 into lots 51 to 54 for 2016 roll
Lot 13 into lots 55 & 56 for 2016 roll
Lot 32 into lots 48 to 50 for 2017 roll
Lot 20 into lots 57 to 59 for 2018 roll



2733-2735 SUTTER ST.
A CONDOMINIUM

LOT	UNIT	% COMM.	AREA
34	2733	48.10	
35	2735	51.90	

2646 POST ST.
A CONDOMINIUM

LOT	UNIT	%COMM.	AREA
26	1	25	
27	2	25	
28	3	25	
29	4	25	

2731A-2731B SUTTER ST.
A CONDOMINIUM

LOT	UNIT	%COMM.	AREA
24	2731A	55.59	
25	2731B	44.41	

1409-1409 1/2 Lyon St.
A CONDOMINIUM

LOT	UNIT	% COMM.	AREA
30	1409	48.1	
31	1409 1/2	51.9	