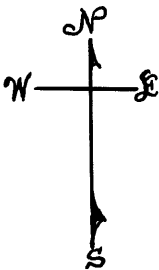


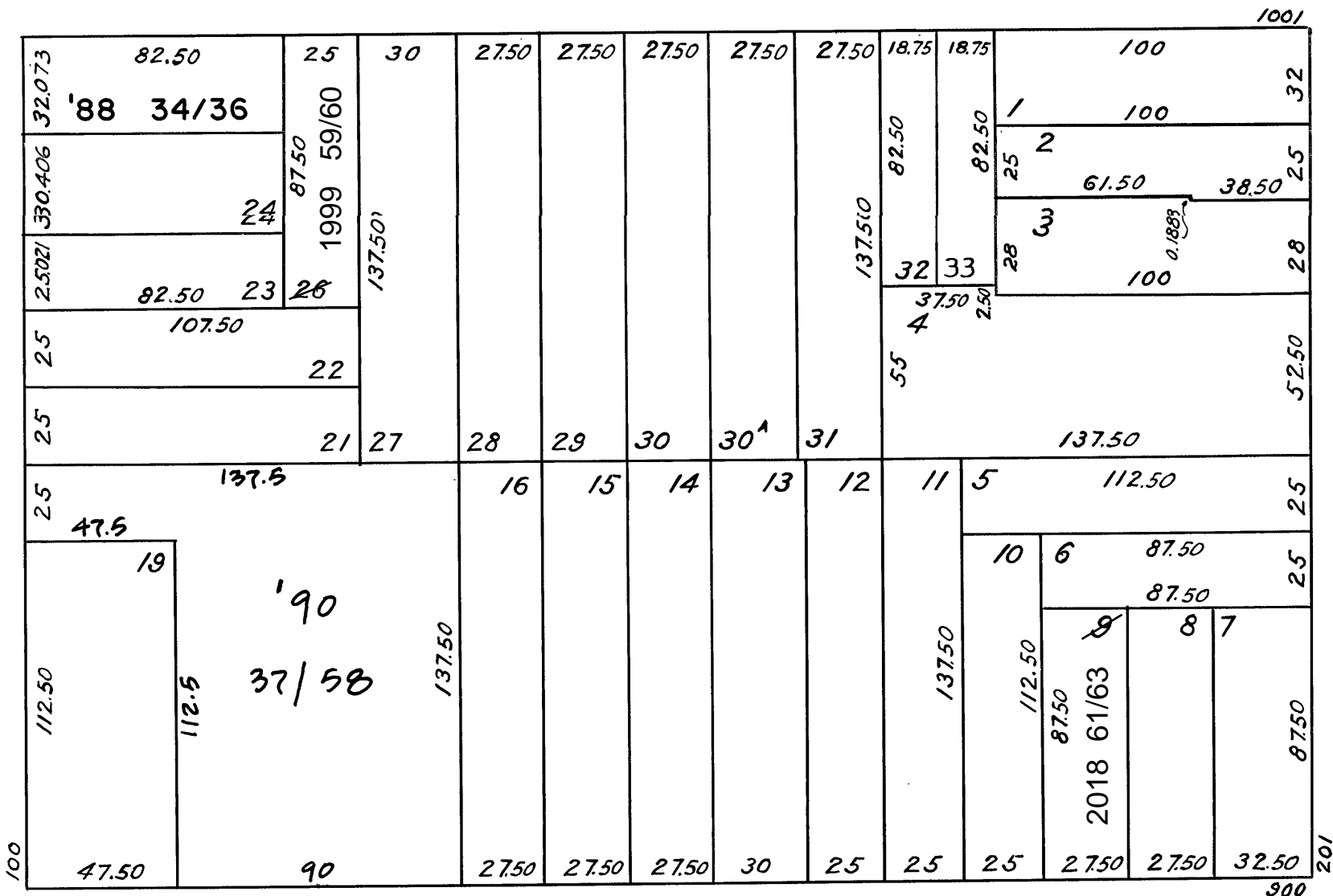
Lot 25 into lots 34 to 36 for 1988 roll  
Lot 17, 18 & 20 into lots 37 to 58 for 1990 roll  
Lot 26 into lots 59 & 60 for 1999 roll  
Lot 9 into lots 61 to 63 for 2018 roll

REVISED '88  
" '90  
REVISED 1999  
REVISED 2018

PAGE



BRODERICK



DIVISADERO

HAIGHT

1085 PAGE ST.		
130-132 BRODERICK ST.		
A CONDOMINIUM		
LOT	UNIT	% COMM. AREA
34	1085	29.334
35	132	34.561
36	130	36.105

960-980 HAIGHT ST.		
110 BRODERICK ST.		
A CONDOMINIUM		
LOT	UNIT	% COMM. AREA
37	960	4.09
38	966	3.48
39	972	3.43
40	976	4.09
41	110-1	4.09
42	110-4	3.43
43	110-6	3.48
44	110-9	4.09
45	962	4.48
46	968	3.89
47	974	8.42
48	978	4.48
49	110-2	4.48
50	110-5	8.42
51	110-7	3.89
52	110-10	4.48
53	964	4.73
54	970	4.18
55	980	4.73
56	110-3	4.73
57	110-8	4.18
58	110-11	4.73