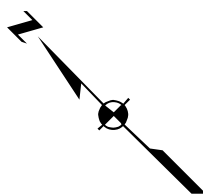


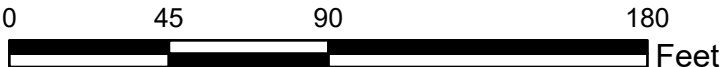


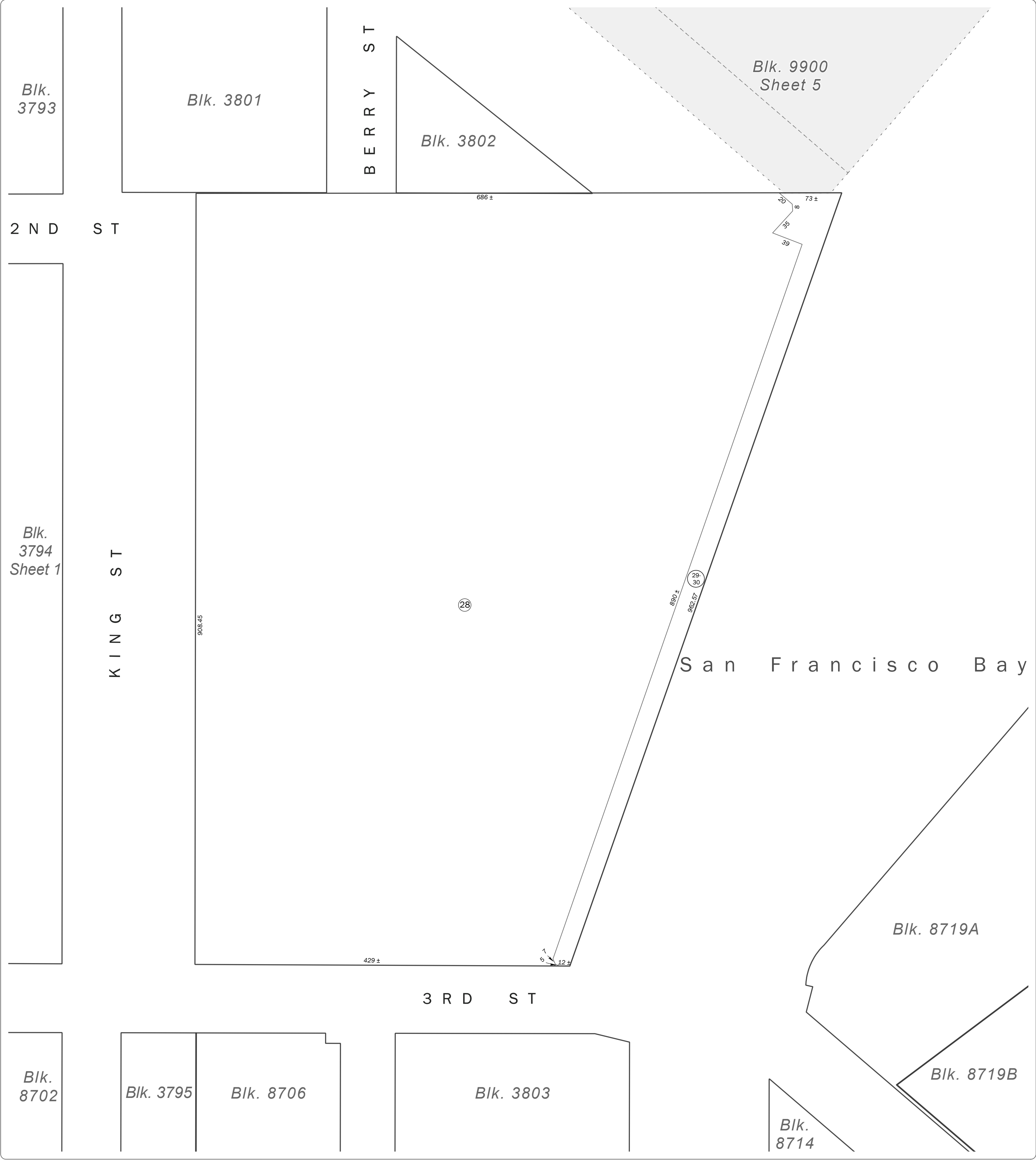
SAN FRANCISCO CITY & COUNTY
ASSESSOR'S BLOCK MAP

DISCLAIMER: THIS MAP WAS PREPARED FOR ASSESSMENT PURPOSES ONLY. ASSESSOR'S PARCELS MAY NOT COMPLY WITH LOCAL LOT-SPLIT OR BUILDING SITE ORDINANCES.



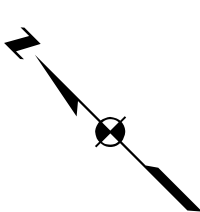
REVISED	2021
---------	------



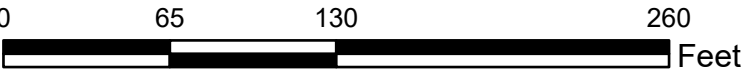


SAN FRANCISCO CITY & COUNTY
ASSESSOR'S BLOCK MAP

DISCLAIMER: THIS MAP WAS PREPARED FOR ASSESSMENT
PURPOSES ONLY. ASSESSOR'S PARCELS MAY NOT COMPLY
WITH LOCAL LOT-SPLIT OR BUILDING SITE ORDINANCES.



REVISED	2021
---------	------



Revision History

From Lot	Change	To Lot	Year
3B, 26-27, 9900/46B, 9900/336	into	28-30	2002
4, 7	into	75	2005
4A	into	31-74, 76	2007
75	into	77-278	2008
2A	into	291-305	2013
3	into	Street	2021