

REVISED 1984

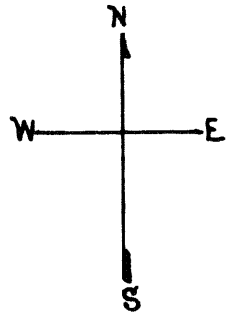
" 86
" '87
Revised 1999
Revised 2006
Revised 2007
REVISED 2018

© COPYRIGHT SAN FRANCISCO
CITY & COUNTY ASSESSOR 1995

LOTS MERGED

LOTS INTO LOT
2 to 24, 37 to 40, 13A 1 "1945"
1 into Lot 50 & Ptn Blk 4221A
1984

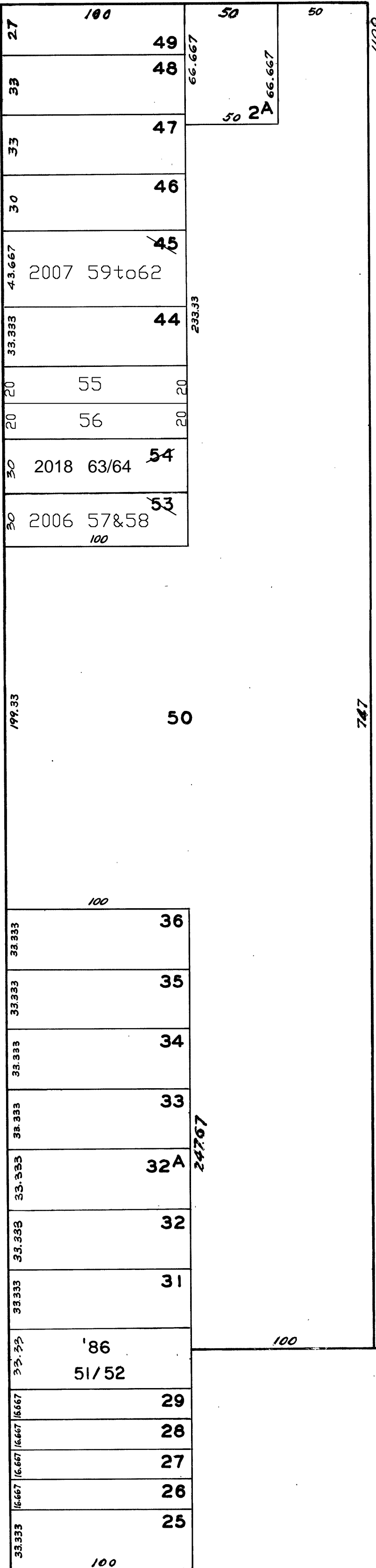
lot 43 into lots 55 & 56 for 1999 roll
lot 53 into lots 57 & 58 for 2006 roll
lot 45 into lots 59 to 62 for 2007 roll
Lot 54 into lots 63 & 64 for 2018 roll



DE HARO

CAROLINA

CLOSED
Subject to Reserv.



1371-1375 DE HARO ST.

A CONDOMINIUM

LOT UNIT % COMMON AREA

51 1371 32.70
52 1375 67.30

1265 DE HARO ST.

A CONDOMINIUM

LOT UNIT % COMM. AREA
57 1 50.06
58 2 49.94

1229-1235 DE HARO ST.

A CONDOMINIUM

LOT UNIT % COMM. AREA
59 1229 27
60 1231 27
61 1233 27
62 1235 19