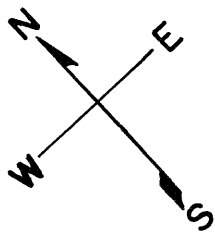


© COPYRIGHT SAN FRANCISCO  
CITY & COUNTY ASSESSOR 1995  
lot14 into lots27to44 for 2007 roll  
Lot 17 into lots 45 & 46 for 2018 roll

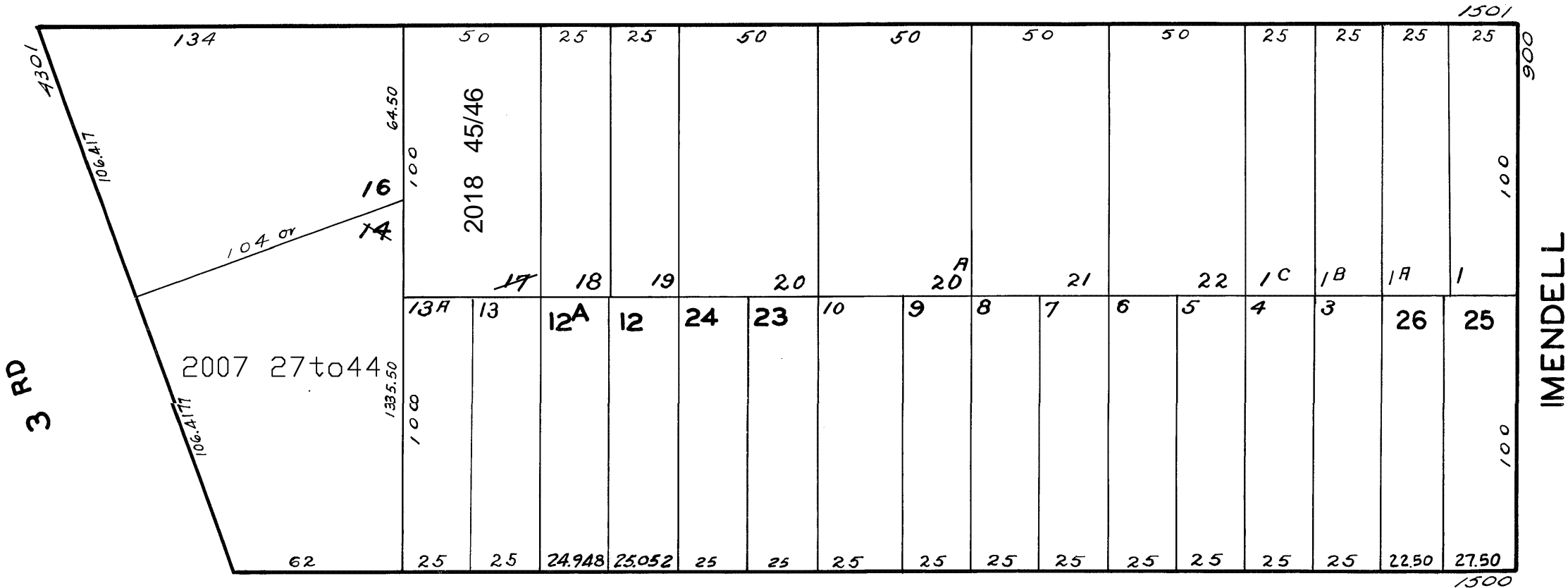
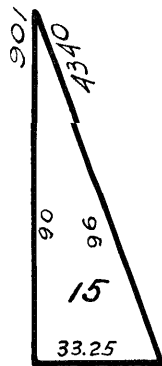
5278

ONEIL & HALEY TRACT BLK 209 &  
CENTRAL PARK HD ASSN BLK 209

REVISED '65  
" '90  
Revised 2007  
REVISED 2018



NEWHALL



KIRKWOOD AVE.

4343 3RD ST. A CONDOMINIUM		
LOT	UNIT	% COMM. AREA
27	A	7.26
28	B	3.13
29	201	6.48
30	202	2.38
31	203	6.18
32	204	5.64
33	205	5.51
34	206	2.94
35	301	6.51
36	302	6.25
37	303	6.18
38	304	5.64
39	305	5.66
40	401	6.51
41	402	6.25
42	403	6.18
43	404	5.64
44	405	5.6