

ASSESSOR-RECORDER'S OFFICE

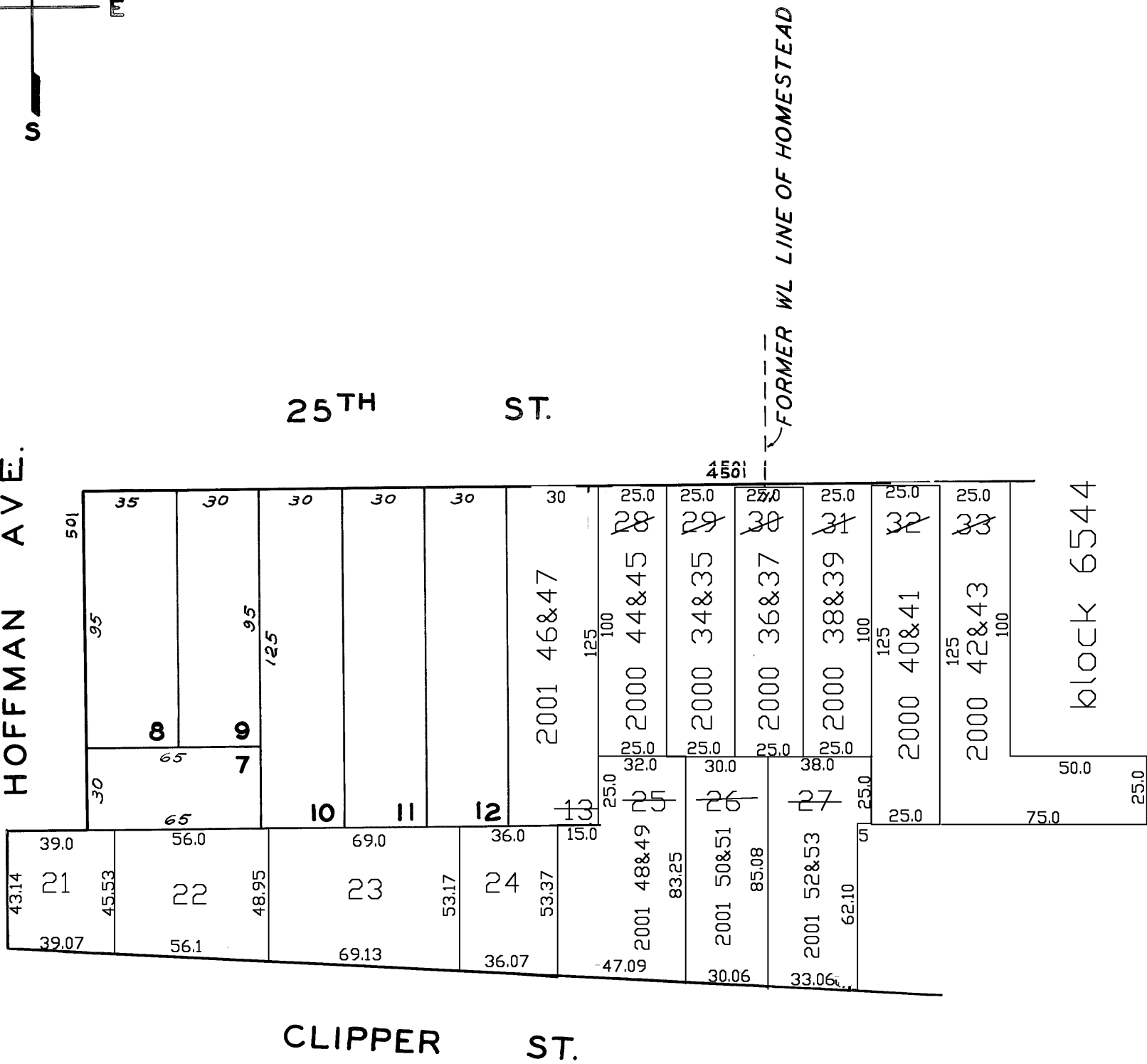
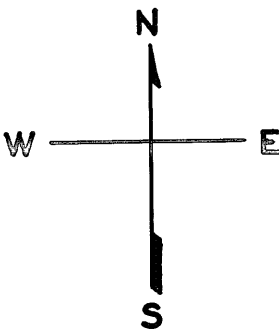
© COPYRIGHT SAN FRANCISCO
CITY & COUNTY ASSESSOR 1995

6543

lots16,17,19&20 into lots21to33 for 1999 roll
lot13 into lots46&47 for 2001 roll
lot25 into lots48&49 for 2001 roll
lot26 into lots50&51 for 2001 roll
lot27 into lots52&53 for 2001 roll
lot29 into lots34&35 for 2000 roll
lot30 into lots36&37 for 2000 roll
lot31 into lots38&39 for 2000 roll
lot32 into lots40&41 for 2000 roll
lot33 into lots42&43 for 2000 roll
lot28 into lots44&45 for 2000 roll

NOE GARDEN HD. UN.
BLK. 21

REVISED	'61
3	'64
"	'65
"	'66
"	'70
Revised	1999
Revised	2000
Revised	2001



4521 25TH ST. A CONDOMINIUM			
LOT	UNIT	% COMM.	AREA
46	1	47.63	
47	2	52.37	

676 CLIPPER ST. A CONDOMINIUM			
LOT	UNIT	% COMM.	AREA
50	1	34.53	
51	2	65.47	

678 CLIPPER ST. A CONDOMINIUM			
LOT	UNIT	% COMM.	AREA
48	1	34.69	
49	2	65.31	

672 CLIPPER ST. A CONDOMINIUM			
LOT	UNIT	% COMM.	AREA
52	1	34.45	
53	2	65.55	

4515 25TH ST. A CONDOMINIUM			
LOT	UNIT	% COMM.	AREA
34	A	46	
35	B	54	

4511 25TH ST. A CONDOMINIUM			
LOT	UNIT	% COMM.	AREA
36	A	38.3	
37	B	61.7	

4509 25TH ST. A CONDOMINIUM			
LOT	UNIT	% COMM.	AREA
38	A	38.4	
39	B	61.6	

4505 25TH ST. A CONDOMINIUM			
LOT	UNIT	% COMM.	AREA
40	A	48.2	
41	B	51.8	

4519 25TH ST. A CONDOMINIUM			
LOT	UNIT	% COMM.	AREA
44	A	47.7	
45	B	52.3	

4495 25TH ST. A CONDOMINIUM			
LOT	UNIT	% COMM.	AREA
42	A	47.6	
43	B	52.4	