

ASSESSOR-RECORDER'S OFFICE

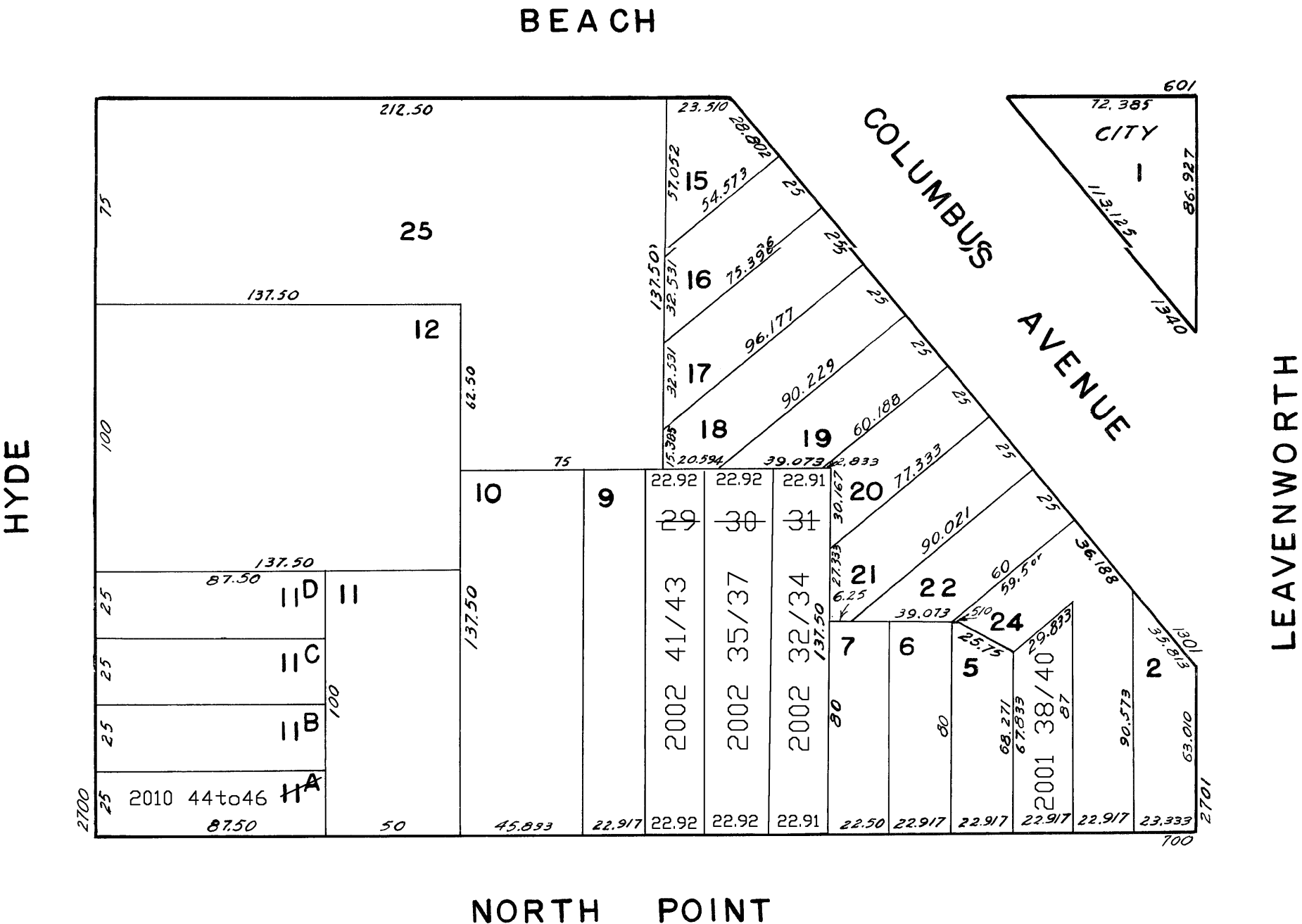
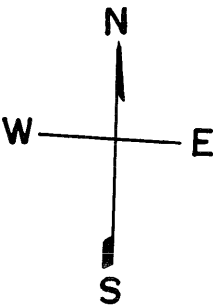
24

50 VARA BLOCK 260

© COPYRIGHT SAN FRANCISCO
CITY & COUNTY ASSESSOR 1995

REVISED 1961
" 1973
Revised 2001
Revised 2002
Revised 2010

lot 4 into lots 38/40 for 2001 roll
lot8 into lots29/31 for 2002 roll
lot31 into lots32/34 for 2002 roll
lot30 into lots35/37 for 2002 roll
lot29 into lots41/43 for 2002 roll
lot11A into lots44to46 for 2010 roll



| 708 NORTH POINT ST. | | | |
|---------------------|------|---------|------|
| A CONDOMINIUM | | | |
| LOT | UNIT | % COMM. | AREA |
| 38 | 1 | 33.36 | |
| 39 | 2 | 34.00 | |
| 40 | 3 | 32.64 | |

| 748 NORTH POINT ST. | | | |
|---------------------|------|---------|------|
| A CONDOMINIUM | | | |
| LOT | UNIT | % COMM. | AREA |
| 32 | 1 | 35.97 | |
| 33 | 2 | 33.68 | |
| 34 | 3 | 30.35 | |

| 750 NORTH POINT ST. | | | |
|---------------------|------|---------|------|
| A CONDOMINIUM | | | |
| LOT | UNIT | % COMM. | AREA |
| 35 | 1 | 34.81 | |
| 36 | 2 | 33.97 | |
| 37 | 3 | 31.22 | |

| 758 NORTH POINT ST. | | | |
|---------------------|------|---------|------|
| A CONDOMINIUM | | | |
| LOT | UNIT | % COMM. | AREA |
| 41 | 1 | 35.01 | |
| 42 | 2 | 34.14 | |
| 43 | 3 | 30.85 | |

ASSESSED 94,731 SQ. FT.
S.B.E. 3,146
BLK. TOTAL 97,877 SQ. FT.