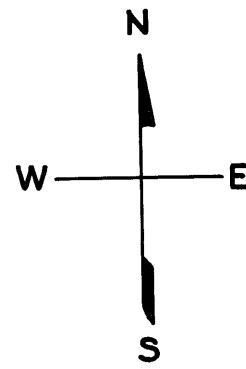


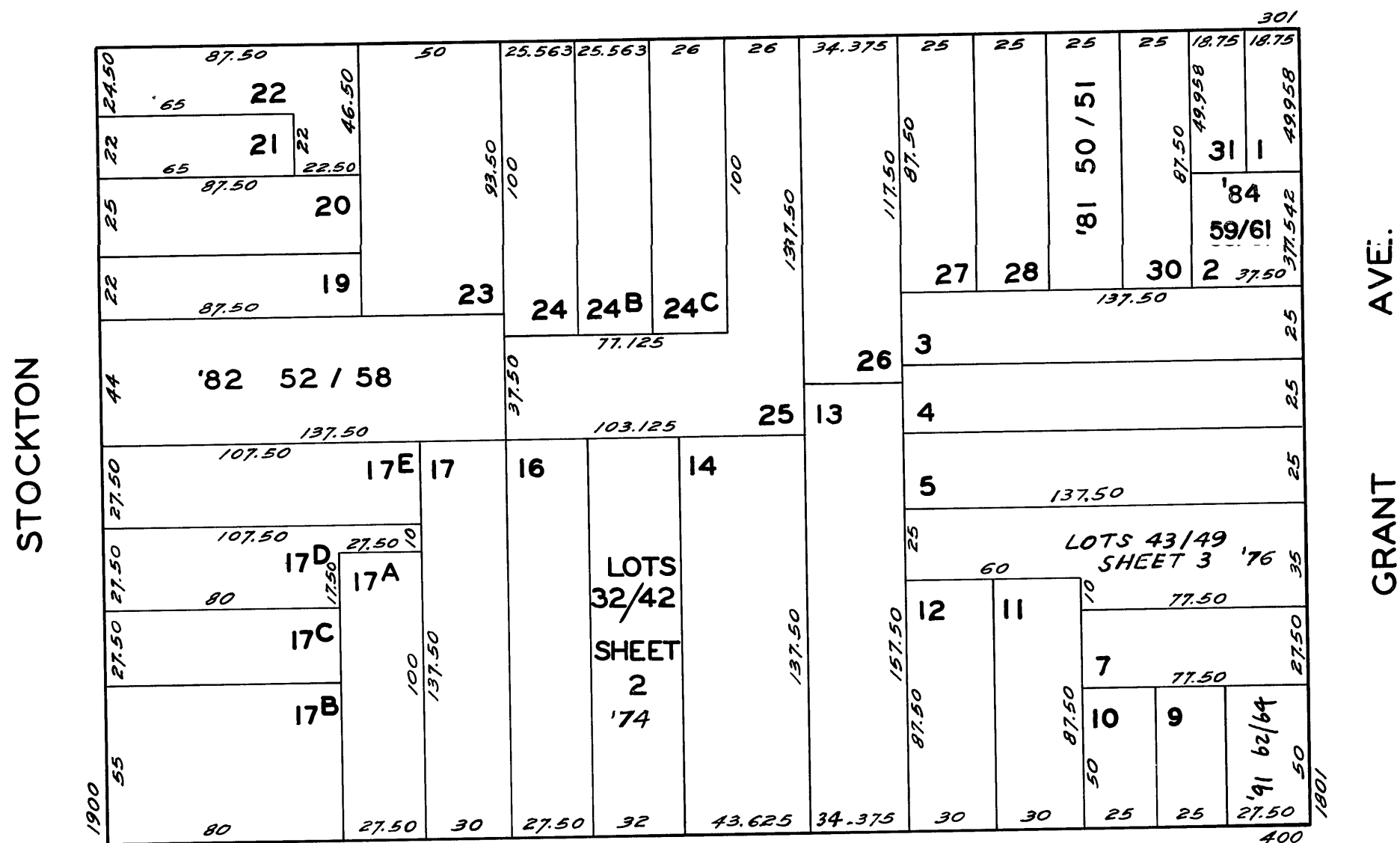
LOTS MERGED
LOT 24A INTO LOT 25 - 1943
" 25A " " " "

© COPYRIGHT SAN FRANCISCO
CITY & COUNTY ASSESSOR 1995



REVISED '74
" '76
" '81
" '82
" '84
" '91

CHESTNUT



LOMBARD

1847 GRANT AVENUE

A CONDOMINIUM

LOT NO.	UNIT NO.	%COMMON AREA
59	1	26.81
60	2	24.66
61	3	48.53

1940 STOCKTON ST.

A CONDOMINIUM PROJECT

LOT NO.	UNIT NO.	%COMMON AREA
52	101	17
53	102	17
54	103	17
55	104	17
56	301	8
57	302	8
58	303	16

315 - 317 CHESTNUT ST.

A CONDOMINIUM

LOT NO.	UNIT NO.	%COMMON AREA
50	315	47.906
51	317	52.094

400 - 402 - 404 LOMBARD ST.

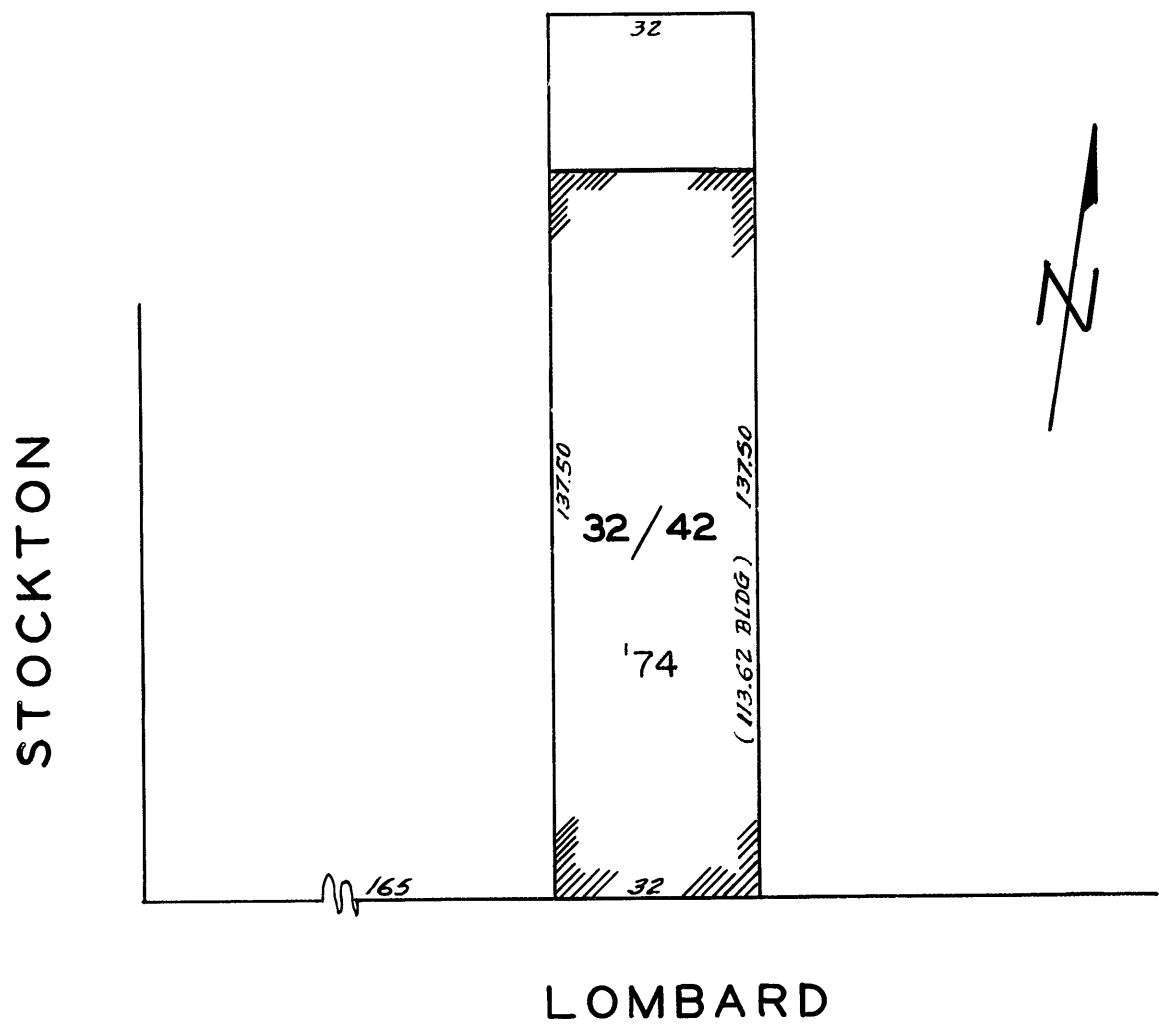
A CONDOMINIUM

LOT	UNIT	% COMM. AREA
62	400	22.87
63	402	26.78
64	404	50.35

ASSESSED 113,438 SQ. FT.
BLK. TOTAL 113,438 SQ. FT.

454 LOMBARD STREET
A CONDOMINIUM

LOT NO.	APT NO.	COMMON AREA % INTEREST PER LOT
32	1	9.10
33	2	9.09
34	3	9.09
35	4	9.09
36	5	9.09
37	6	9.09
38	7	9.09
39	8	9.09
40	9	9.09
41	10	9.09
42	11	9.09



© COPYRIGHT SAN FRANCISCO
CITY & COUNTY ASSESSOR 1995

1821 GRANT AVENUE
A CONDOMINIUM

LOT NO.	UNIT NO.	%COMMON AREA
43	101	10.51
44	201	13.75
45	202	14.45
46	301	14.45
47	302	15.32
48	401	15.32
49	402	16.20

