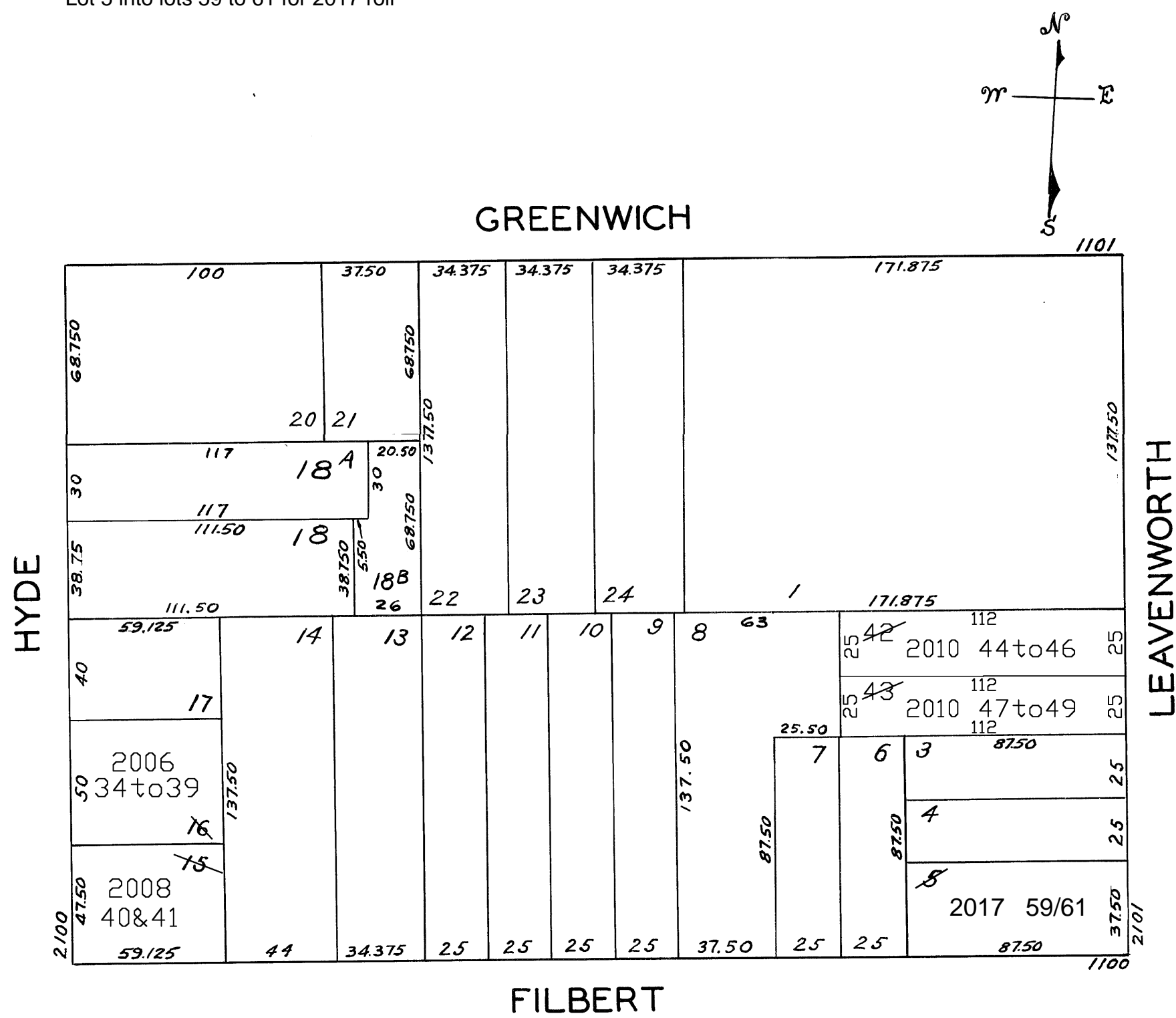


© COPYRIGHT SAN FRANCISCO
CITY & COUNTY ASSESSOR 1995

LOTS MERGED
 Lot 19 into Lot 20-32
 Lot 25 into Lot 1-43
 lot16 into lots34to39 for 2006 roll
 lot15 into lots40&41 for 2008 roll
 lot2 into lots42&43 for 2009 roll
 lot42 into lots44to46 for 2010 roll
 lot43 into lots47to49 for 2010 roll
 Lot 5 into lots 59 to 61 for 2017 roll



| 2112-HYDE ST. | | |
|---------------|------|--------------|
| A CONDOMINIUM | | |
| LOT | UNIT | % COMM. AREA |
| 34 | 1 | 16.66 |
| 35 | 2 | 16.66 |
| 36 | 3 | 16.67 |
| 37 | 4 | 16.67 |
| 38 | 5 | 16.67 |
| 39 | 6 | 16.67 |

ASSESSED
 113,438 SQFT

BLK. TOTAL
 113,438 SQFT