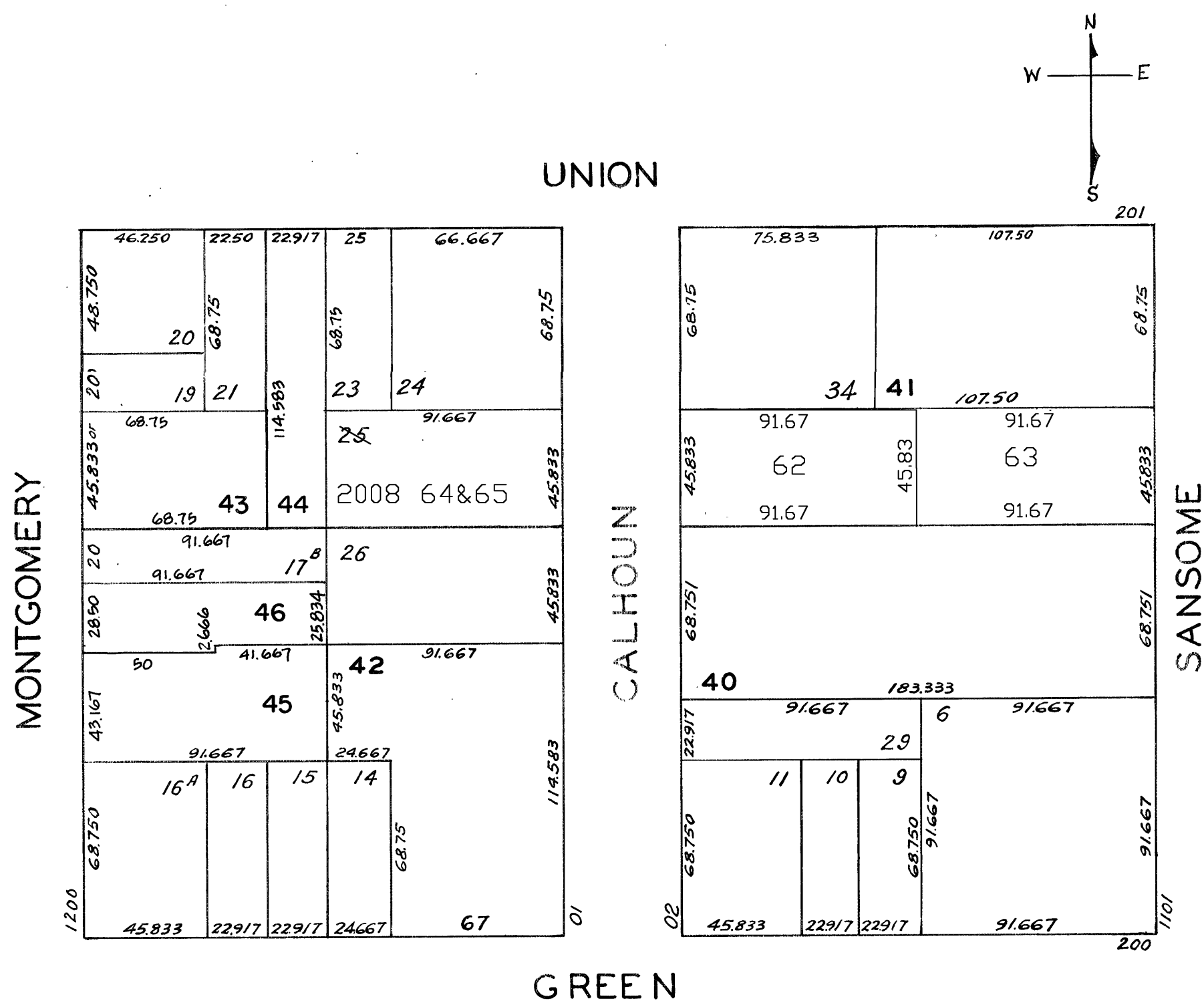


© COPYRIGHT SAN FRANCISCO
CITY & COUNTY ASSESSOR 1995

lot39 into lots62&63 for 2004 roll
lot25 into lots64&65 for 2008 roll

Lot 7 into Lot 6 - 43

" 8 - "	" 6 - "
" 13 "	" 12 - "
" 28 "	" 27 - "
" 35 "	" 34 - "
" 37 "	" 36 - "
" 38 "	" 36 - "



9 CALHOUN TERRACE.

<u>LOT</u>	<u>UNIT</u>
64	A
65	B