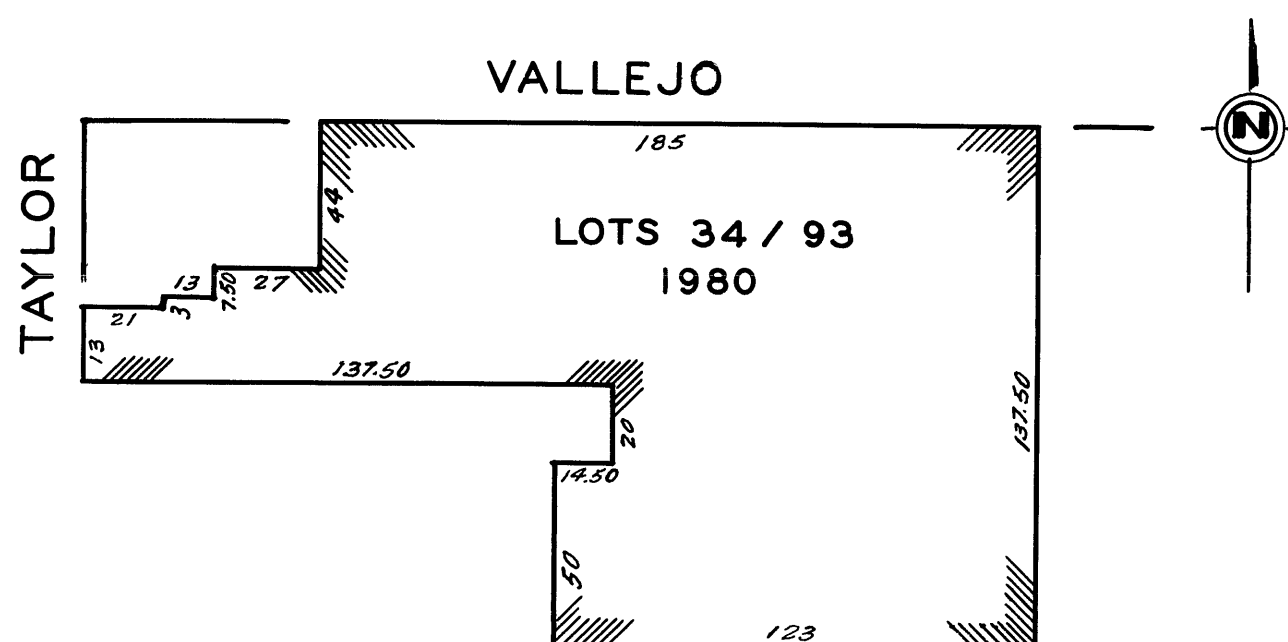


LANDMARK

A CONDOMINIUM

| LOT & UNIT NOS. | %COMMON AREA | LOT & UNIT NOS. | %COMMON AREA |
|--------------------------|--------------|--------------------------|--------------|
| 34 | 1.366 | 66 | 0.943 |
| 35 | 0.988 | 67 | 1.657 |
| 36 | 1.103 | 68 | 1.324 |
| 37 | 1.285 | 69 | 1.128 |
| 38 | 1.150 | 70 | 1.549 |
| 39 | 1.513 | 71 | 1.704 |
| 40 LOWER } 40 UPPER } | 2.402 | 72 | 1.388 |
| 41 | 1.281 | 73 LOWER } 73 UPPER } | 1.912 |
| 42 | 1.029 | 74 | 1.796 |
| 43 | 1.023 | 75 | 1.276 |
| 44 | 1.169 | 76 | 1.251 |
| 45 | 1.320 | 77 | 1.073 |
| 46 | 1.215 | 78 | 1.424 |
| 47 | 1.682 | 79 LOWER } 79 UPPER } | 3.169 |
| 48 LOWER } 48 UPPER } | 5.989 | 80 | 1.276 |
| 49 | 1.281 | 81 LOWER } 81 UPPER } | 3.168 |
| 50 | 1.029 | 82 | 1.395 |
| 51 | 1.023 | 83 | 1.164 |
| 52 | 1.160 | 84 | 1.515 |
| 53 | 1.320 | 85 | 1.276 |
| 54 | 1.215 | 86 LOWER } 86 UPPER } | 3.030 |
| 55 | 2.865 | 87 LOWER } 87 UPPER } | 2.356 |
| 56 LOWER } 56 UPPER } | 1.853 | 88 LOWER } 88 UPPER } | 2.888 |
| 57 | 1.320 | 89 | 1.519 |
| 58 | 1.215 | 90 | 1.633 |
| 59 | 3.648 | 91 | 1.519 |
| 60 | 1.270 | 92 | 1.707 |
| 61 | 1.378 | 93 | 3.494 |
| 62 | 1.290 | | |
| 63 | 1.324 | | |
| 64 | 1.128 | | |
| 65 | 1.643 | | |



FORMER BLK 149 LOT 33

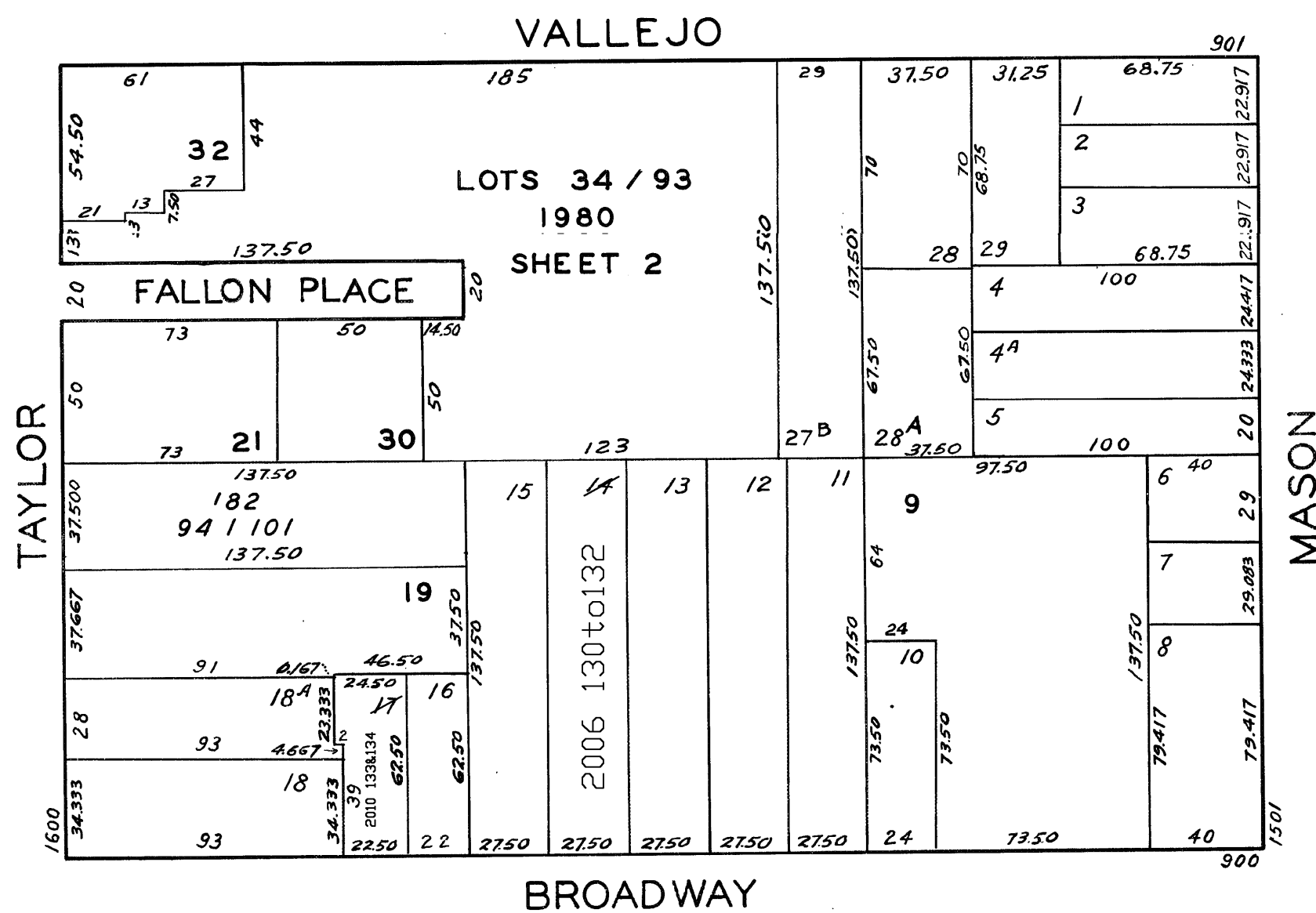
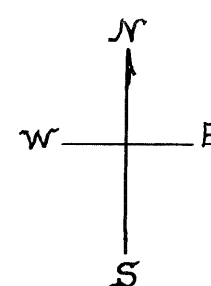
Nov. 1979 J.Y.

REVISED '62
" '78
" '80
" '82
Revised 2006
Revised 2010

Lot 30 merged into lot 1 - '51'

© COPYRIGHT SAN FRANCISCO
CITY & COUNTY ASSESSOR 1995

lot14 into lots130to132 for 2006 roll
lot17 into lots133&134 for 2010 roll



| 1632 TAYLOR STREET A CONDOMINIUM | | |
|-------------------------------------|----------|---------------|
| LOT NO. | UNIT NO. | % COMMON AREA |
| 94 | 1 | 12.50 |
| 95 | 2 | 12.50 |
| 96 | 3 | 12.50 |
| 97 | 4 | 12.50 |
| 98 | 5 | 12.50 |
| 99 | 6 | 12.50 |
| 100 | 7 | 12.50 |
| 101 | 8 | 12.50 |

| 954-958 BROADWAY A CONDOMINIUM | | |
|-----------------------------------|------|--------------|
| LOT | UNIT | % COMM. AREA |
| 130 | 958 | 59.1 |
| 131 | 956 | 19.6 |
| 132 | 954 | 21.3 |

ASSESSED 110,688
BLK. TOTAL 110,688 SQ. FT.