

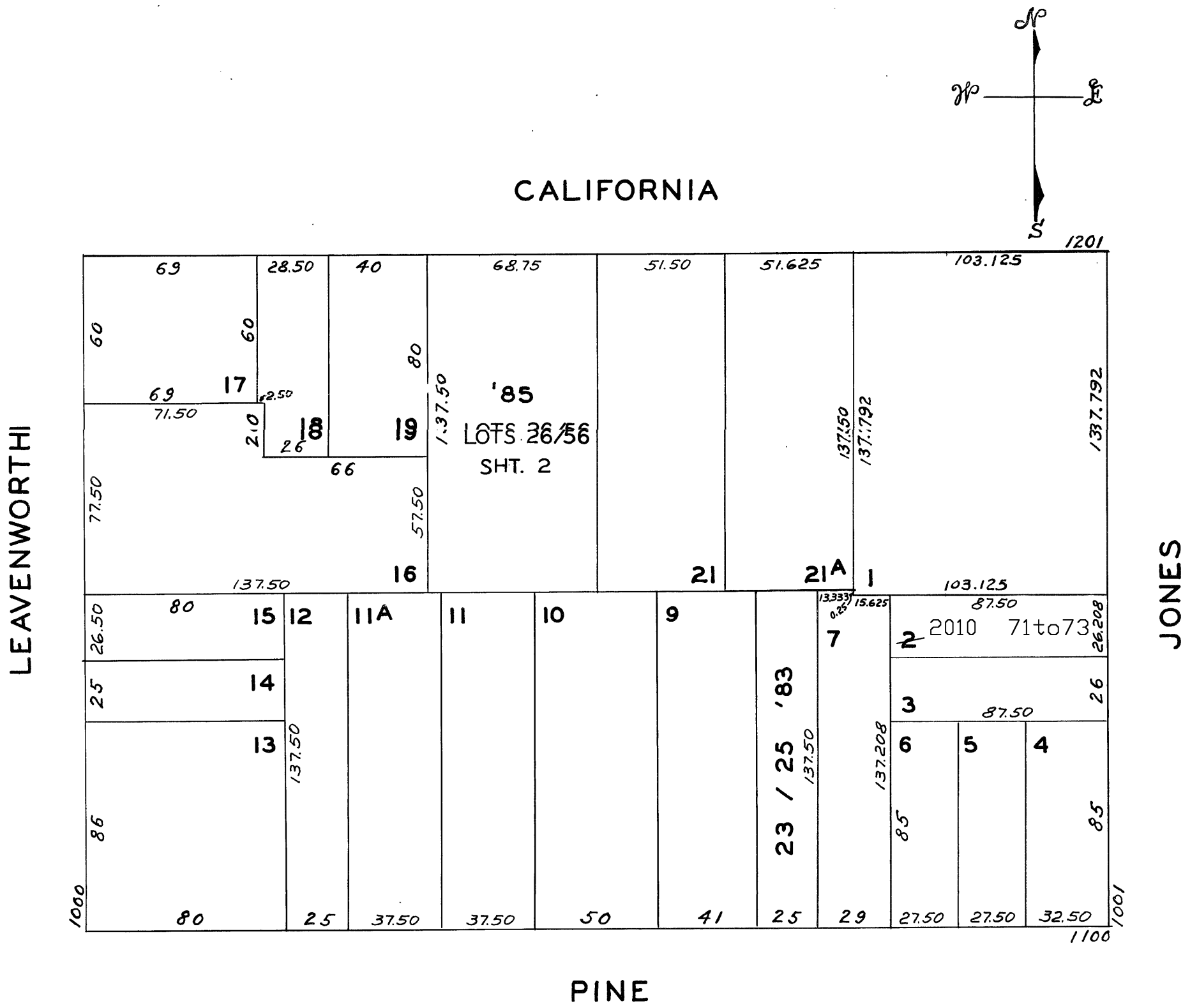
© COPYRIGHT SAN FRANCISCO  
CITY & COUNTY ASSESSOR 1995

50 VARA BLOCK 248

REVISED 1983  
" '85  
Revised 2010

LOTS MERGED

Lot 22 merged into lot 1 '43  
lot 2 into lots 71 to 73 for 2010 roll



1128-30-32 PINE ST.		
A CONDOMINIUM		
LOT	UNIT	%COMM AREA
23	1	1 / 3
24	2	1 / 3
25	3	1 / 3

ASSESSED 113,438  
BLK. TOTAL 113,438 SQ. FT.

© COPYRIGHT SAN FRANCISCO  
CITY & COUNTY ASSESSOR 1995

# THE COURTYARD ON NOB HILL

## 1255 CALIFORNIA ST

### A CONDOMINIUM

LOT NO	UNIT NO	% COMMON AREA	LOT NO	UNIT NO	% COMMON AREA
26	101	1.886	42	403	4.367
27	102	1.851	43	404	4.036
28	103	1.847	44	405	3.196
29	104	2.043	45	501	3.478
30	201	1.887	46	502	4.667
31	202	1.850	47	503	4.048
32	203	4.367	48	504	3.223
33	204	4.078	49	601	3.492
34	205	3.236	50	602	4.667
35	301	1.887	51	603	4.049
36	302	1.850	52	604	3.223
37	303	4.367	53	701	3.486
38	304	4.049	54	702	4.667
39	305	3.216	55	703	4.049
40	401	1.887	56	704	3.201
41	402	1.850			

