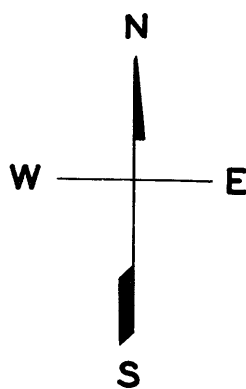
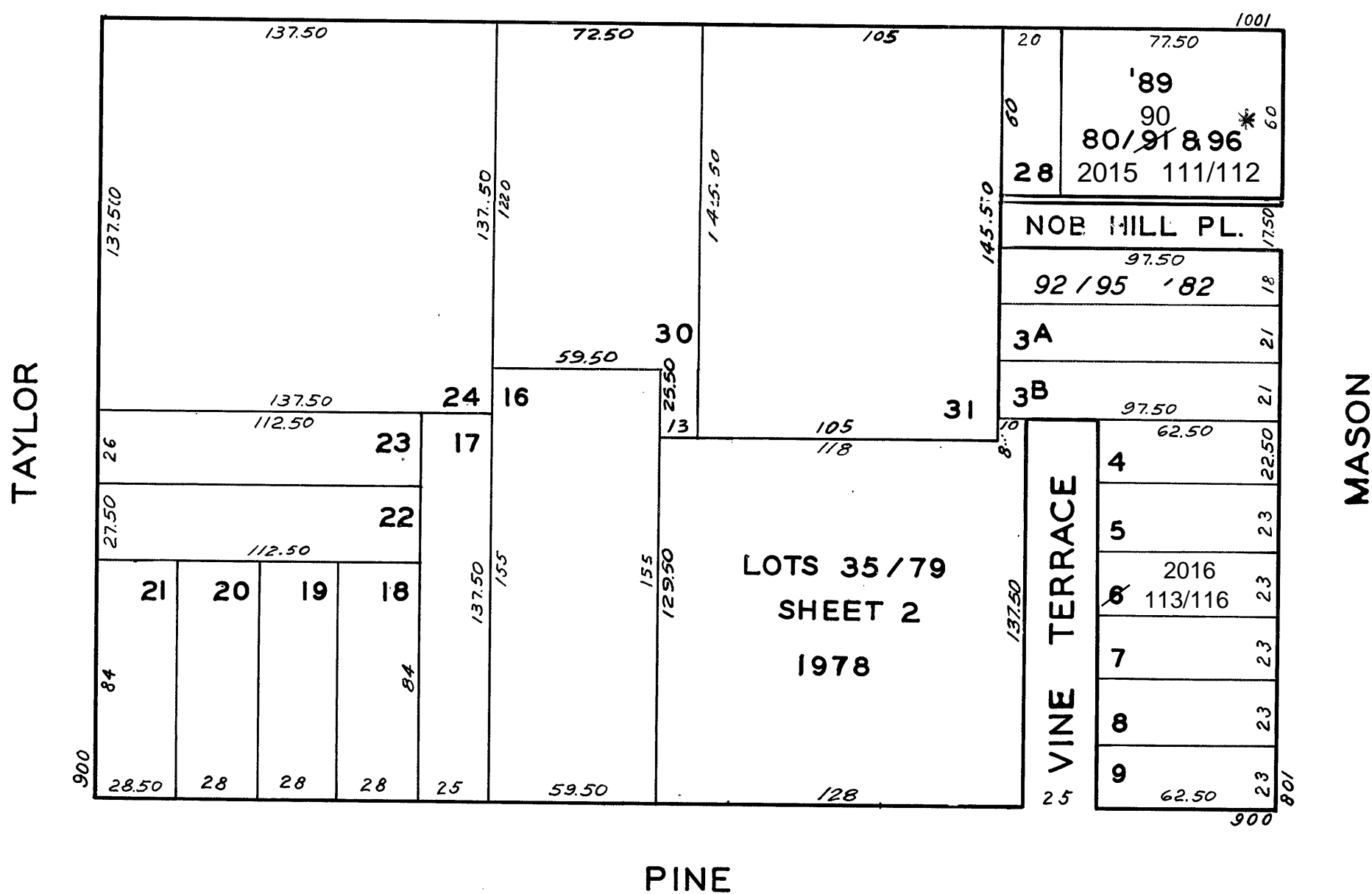


LOTS MERGED
Lot 10 merged into lot 2 '43
" 27 " " 26 "
12,13,29,32 & 33 " " 34 '72
Lot 91 into lots 111 & 112 for 2015 roll
Lot 6 into lots 113 to 116 for 2016 roll



CALIFORNIA



| 1001 CALIFORNIA ST | | |
|--------------------|---------------|--------------|
| A CONDOMINIUM | | |
| LOT | UNIT | % COMM. AREA |
| 80 | 2A | 5.606 |
| 81 | 2B | 5.985 |
| 82 | 3A | 5.656 |
| 83 | 3B | 5.923 |
| 84 | 4A | 5.606 |
| 85 | 4B | 5.923 |
| 86 | 5A | 5.652 |
| 87 | 5B | 5.923 |
| 88 | 6 | 12.191 |
| 89 | 7 | 10.073 |
| 90 | 8(PENTHOUSE) | 2.922 |
| 91 | 9(RESTAURANT) | 27.828 |
| 96* | 10 | 0.712 |

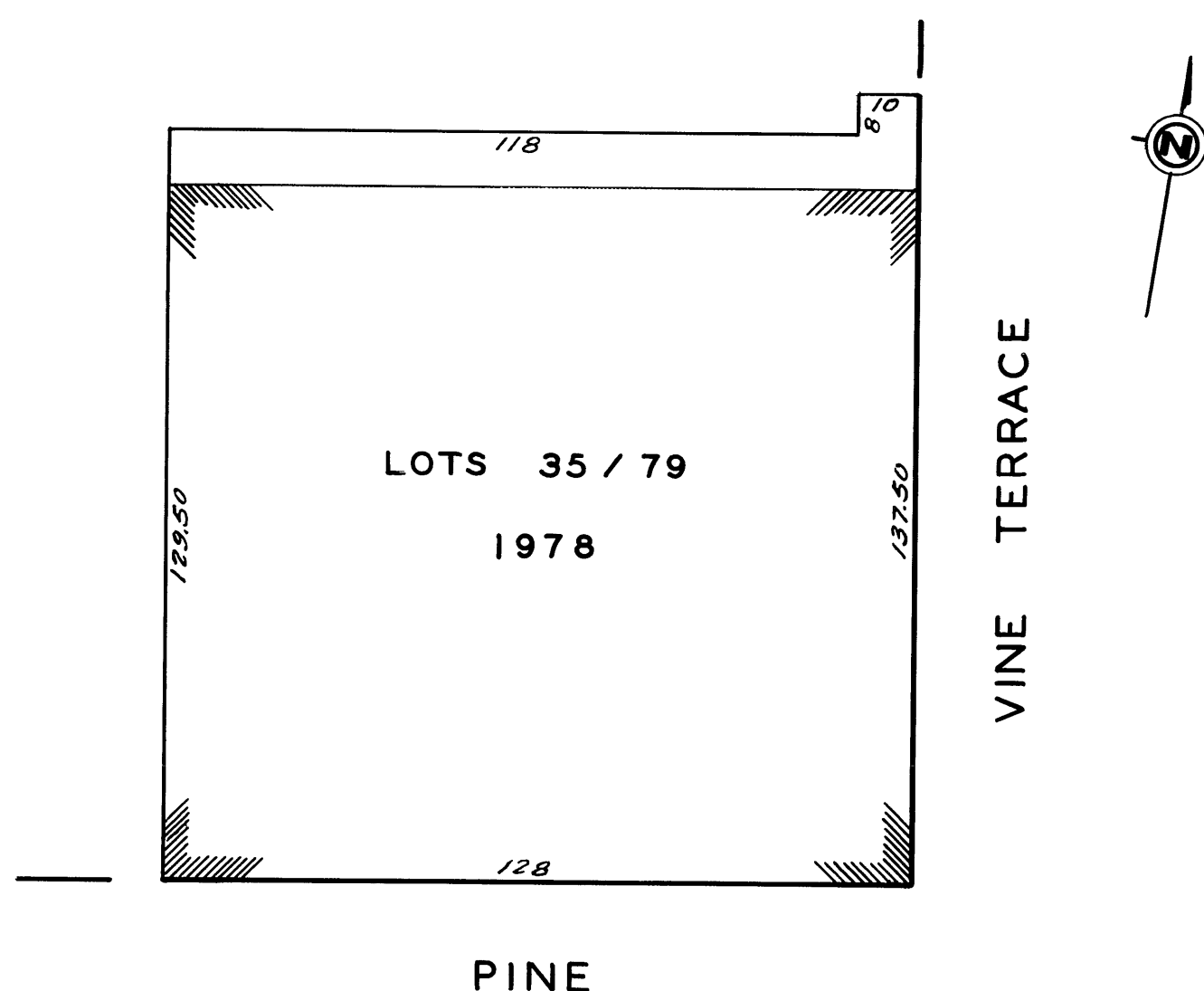
| 849 MASON ST. | | |
|---------------|---------|---------------|
| A CONDOMINIUM | | |
| LOT NO | UNIT NO | % COMMON AREA |
| 92 | 1 | 21.75 |
| 93 | 2 | 27.55 |
| 94 | 3 | 28.18 |
| 95 | 4 | 22.52 |

* LOT NUMBER SKIPPED

ASSESSED 109,294
BLK. TOTAL 109,294 SQ. FT.

NOB HILL COURT**A CONDOMINIUM**

| LOT NO. | UNIT NO. | %COMMON AREA | LOT NO. | UNIT NO. | %COMMON AREA | LOT NO. | UNIT NO. | %COMMON AREA |
|---------|----------|--------------|---------|----------|--------------|---------|----------|--------------|
| 35 | 101 | 2.222 | 50 | 201 | 2.222 | 65 | 301 | 2.222 |
| 36 | 102 | 2.222 | 51 | 202 | 2.222 | 66 | 302 | 2.222 |
| 37 | 103 | 2.222 | 52 | 203 | 2.222 | 67 | 303 | 2.222 |
| 38 | 104 | 2.222 | 53 | 204 | 2.222 | 68 | 304 | 2.222 |
| 39 | 105 | 2.222 | 54 | 205 | 2.222 | 69 | 305 | 2.222 |
| 40 | 106 | 2.222 | 55 | 206 | 2.222 | 70 | 306 | 2.222 |
| 41 | 107 | 2.222 | 56 | 207 | 2.222 | 71 | 307 | 2.222 |
| 42 | 108 | 2.222 | 57 | 208 | 2.222 | 72 | 308 | 2.222 |
| 43 | 109 | 2.222 | 58 | 209 | 2.222 | 73 | 309 | 2.222 |
| 44 | 110 | 2.222 | 59 | 210 | 2.222 | 74 | 310 | 2.222 |
| 45 | 111 | 2.222 | 60 | 211 | 2.222 | 75 | 311 | 2.222 |
| 46 | 112 | 2.222 | 61 | 212 | 2.222 | 76 | 312 | 2.222 |
| 47 | 114 | 2.222 | 62 | 214 | 2.222 | 77 | 314 | 2.222 |
| 48 | 115 | 2.222 | 63 | 215 | 2.222 | 78 | 315 | 2.222 |
| 49 | 116 | 2.222 | 64 | 216 | 2.222 | 79 | 316 | 2.222 |



NOB HILL COURT**A CONDOMINIUM**

| LOT NO. | UNIT NO. | %COMMON AREA | LOT NO. | UNIT NO. | %COMMON AREA | LOT NO. | UNIT NO. | %COMMON AREA |
|---------|----------|--------------|---------|----------|--------------|---------|----------|--------------|
| 35 | 101 | 2.222 | 50 | 201 | 2.222 | 65 | 301 | 2.222 |
| 36 | 102 | 2.222 | 51 | 202 | 2.222 | 66 | 302 | 2.222 |
| 37 | 103 | 2.222 | 52 | 203 | 2.222 | 67 | 303 | 2.222 |
| 38 | 104 | 2.222 | 53 | 204 | 2.222 | 68 | 304 | 2.222 |
| 39 | 105 | 2.222 | 54 | 205 | 2.222 | 69 | 305 | 2.222 |
| 40 | 106 | 2.222 | 55 | 206 | 2.222 | 70 | 306 | 2.222 |
| 41 | 107 | 2.222 | 56 | 207 | 2.222 | 71 | 307 | 2.222 |
| 42 | 108 | 2.222 | 57 | 208 | 2.222 | 72 | 308 | 2.222 |
| 43 | 109 | 2.222 | 58 | 209 | 2.222 | 73 | 309 | 2.222 |
| 44 | 110 | 2.222 | 59 | 210 | 2.222 | 74 | 310 | 2.222 |
| 45 | 111 | 2.222 | 60 | 211 | 2.222 | 75 | 311 | 2.222 |
| 46 | 112 | 2.222 | 61 | 212 | 2.222 | 76 | 312 | 2.222 |
| 47 | 114 | 2.222 | 62 | 214 | 2.222 | 77 | 314 | 2.222 |
| 48 | 115 | 2.222 | 63 | 215 | 2.222 | 78 | 315 | 2.222 |
| 49 | 116 | 2.222 | 64 | 216 | 2.222 | 79 | 316 | 2.222 |

