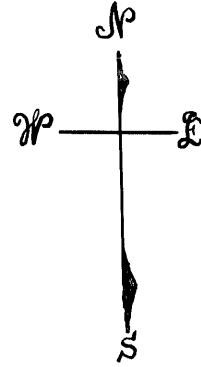


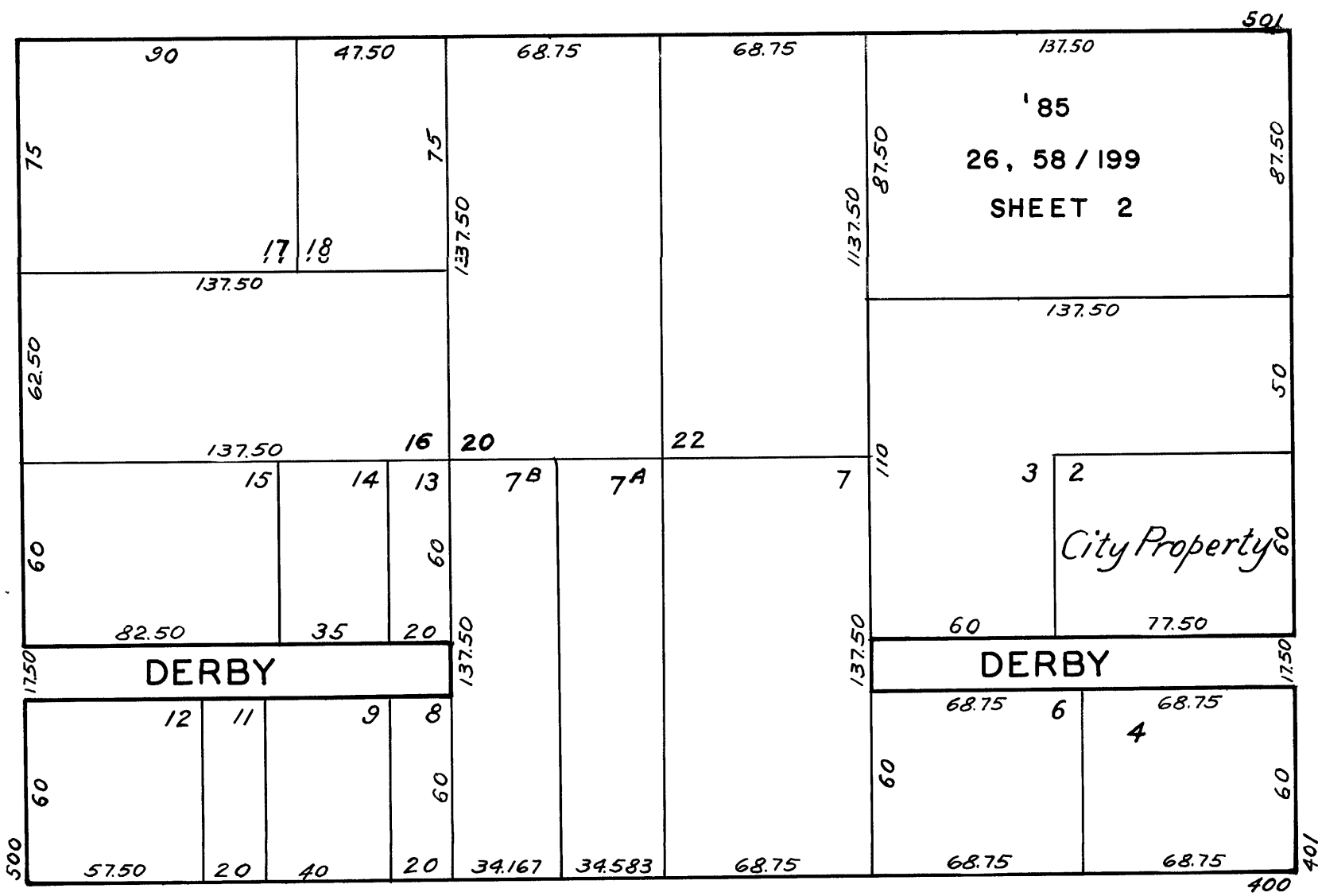
LOTS MERGED  
LOT 19 INTO LOT 18-20  
Lot 1A merged into lot 3 43  
" 5 " " 4 "  
" 10 " " 9 "  
" 21 " " 20 "  
" 23 " " 22 "  
" 25 " " 24 "



POST

TAYLOR

MASON



GEARY

ASSESSED 103,975  
CITY 4,650  
BLK. TOTAL 108,625 SQ. FT.

THE PACIFIC PLAZA  
501 POST ST

306

SHEET 2

A CONDOMINIUM

LOT NO	UNIT NO	% COMMON AREA	LOT NO	UNIT NO	% COMMON AREA
Bsmt.	100	—	127	907	0.3388
	100	—	128	908	0.3388
26	100	—	129	909	0.3388
	100	—	130	910	0.3388
	100	—	131	911	0.3388
58	501	0.3256	132	912	0.3388
59	502	0.3128	133	914	0.3329
60	503	0.3393	134	915	0.3388
61	504	0.4108	135	917	0.3388
62	505	0.3466	136	919	0.3101
63	506	0.3903	137	1001	0.3179
64	507	0.3466	138	1002	0.3128
65	508	0.3388	139	1003	0.3316
66	509	0.3466	140	1004	0.4108
67	510	0.3388	141	1005	0.3388
68	511	0.3466	142	1006	0.3903
69	512	0.3388	143	1007	0.3388
70	514	0.3329	144	1008	0.3388
71	515	0.3466	145	1009	0.3388
72	517	1.1984	146	1010	0.3388
73	601	0.3179	147	1011	0.3388
74	602	0.3128	148	1012	0.3388
75	603	0.3316	149	1014	0.3329
76	604	0.4108	150	1015	0.3388
77	605	0.3388	151	1017	0.3388
78	606	0.3903	152	1019	0.3101
79	607	0.3388	153	1101	0.3179
80	608	0.3388	154	1102	0.3128
81	609	0.3388	155	1103	0.3316
82	610	0.3388	156	1104	0.4108
83	611	0.3388	157	1105	0.3388
84	612	0.3388	158	1106	0.3903
85	614	0.3329	159	1107	0.3388
86	615	0.3388	160	1108	0.3388
87	617	0.3388	161	1109	0.3388
88	619	0.3101	162	1110	0.3388
89	701	0.3179	163	1111	0.3388
90	702	0.3128	164	1112	0.3388
91	703	0.3316	165	1114	0.3329
92	704	0.4108	166	1115	0.3388
93	705	0.3388	167	1117	0.3388
94	706	0.3903	168	1119	0.3101
95	707	0.3388	169	1201	0.3179
96	708	0.3388	170	1202	0.3128
97	709	0.3388	171	1203	0.3316
98	710	0.3388	172	1204	0.4108
99	711	0.3388	173	1205	0.3388
100	712	0.3388	174	1206	0.3903
101	714	0.3329	175	1207	0.3388
102	715	0.3388	176	1208	0.3388
103	717	0.3388	177	1209	0.3388
104	719	0.3101	178	1210	0.3388
105	801	0.3179	179	1211	0.3388
106	802	0.3128	180	1212	0.3388
107	803	0.3316	181	1214	0.3329
108	804	0.4108	182	1215	0.3388
109	805	0.3388	183	1217	0.3388
110	806	0.3903	184	1219	0.3101
111	807	0.3388	185	1401	0.3179
112	808	0.3388	186	1402	1.1456
113	809	0.3388	187	1403	0.3316
114	810	0.3388	188	1405	0.3388
115	811	0.3388	189	1407	0.3388
116	812	0.3388	190	1408	0.3388
117	814	0.3329	191	1409	0.3388
118	815	0.3388	192	1410	0.3388
119	817	0.3388	193	1411	0.3388
120	819	0.3101	194	1412	0.3388
121	901	0.3179	195	1414	0.3329
122	902	0.3128	196	1415	0.3388
123	903	0.3316	197	1417	0.3388
124	904	0.4108	198	1419	0.3101
125	905	0.3388	199	1500	4.8977
126	906	0.3903			

