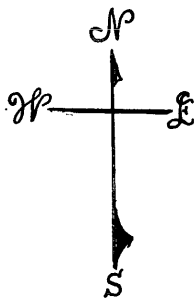


© COPYRIGHT SAN FRANCISCO
CITY & COUNTY ASSESSOR 1995

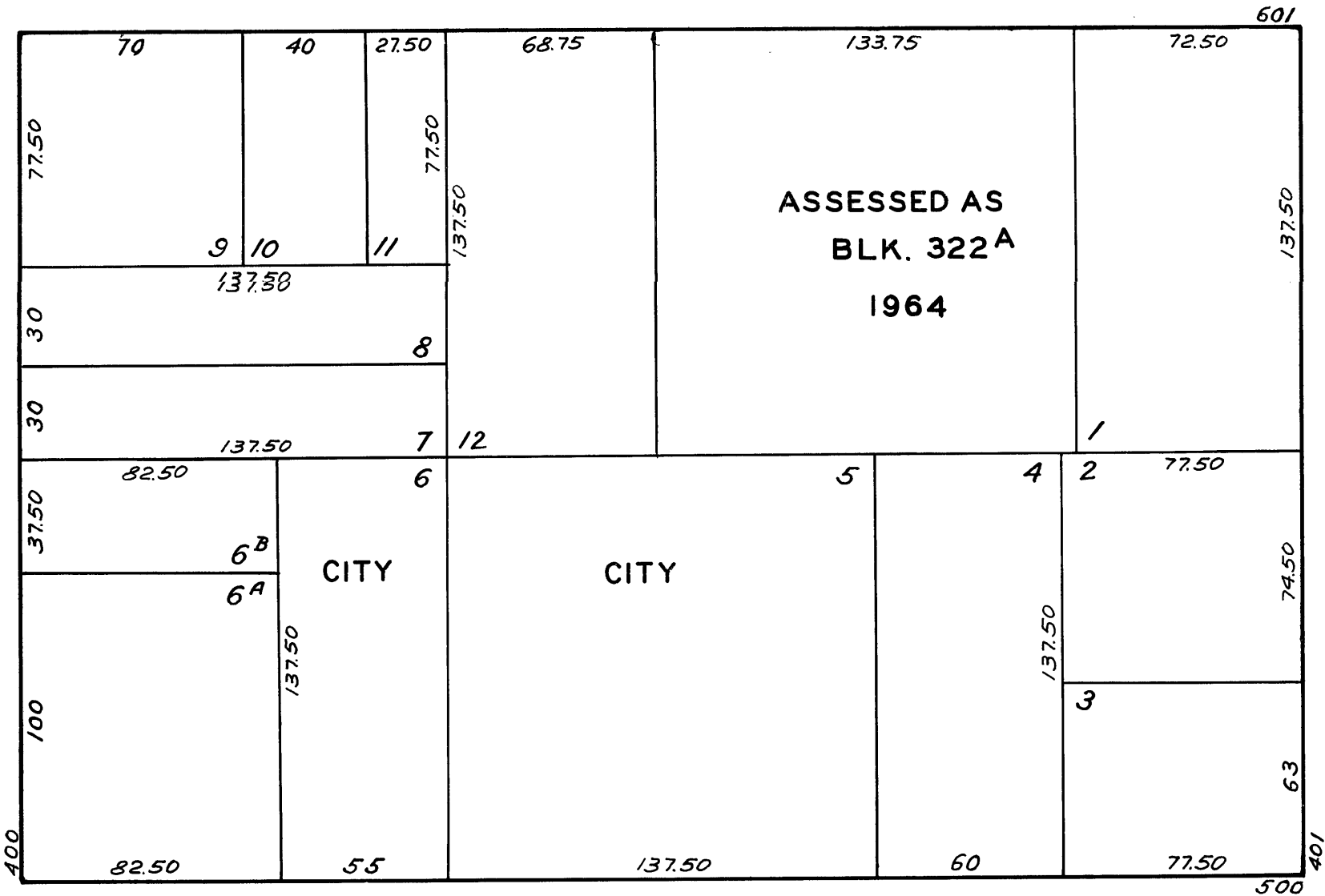
LOTS MERGED
LOTS 1A INTO LOT 13 1943



O'FARRELL

HYDE

LEAVENWORTH

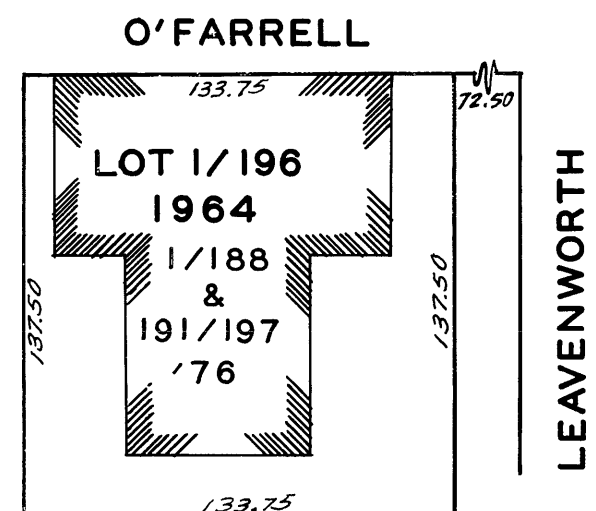


ELLIS

THE HAMILTON

322A
50 VARA BLK 283

LOT NO.	UNIT NO.	%COMMON AREA	LOT NO.	UNIT NO.	%COMMON AREA	LOT NO.	UNIT NO.	%COMMON AREA	LOT NO.	UNIT NO.	%COMMON AREA
1	201	0.32320	54	611	0.41010	107	1012	0.46171	160	1514	0.50244
2	211	0.33678	55	612	0.39924	108	1014	0.46714	161	1515	0.54590
3	212	0.33135	56	614	0.41282	109	1015	0.49973	162	1516	0.54590
4	214	0.34222	57	615	0.43455	110	1016	0.50516	163	1601	0.70885
5	215	0.35035	58	616	0.43455	111	1102	0.77947	164	1602	0.66540
6	216	0.37752	59	702	0.70071	112	1103	0.51059	165	1603	0.29332
7	302	0.56764	60	703	0.45356	113	1104	0.46442	166	1604	0.51602
8	303	0.35986	61	704	0.42097	114	1105	0.46171	167	1605	0.64096
9	304	0.36937	62	705	0.42097	115	1106	0.46442	168	1606	0.61108
10	305	0.36666	63	706	0.42097	116	1107	0.51059	169	1607	0.32591
11	306	0.36937	64	707	0.43726	117	1108	0.78218	170	1701	0.63281
12	307	0.35035	65	708	0.68441	118	1110	0.46985	171	1702	0.57034
13	308	0.55132	66	710	0.40739	119	1111	0.46985	172	1703	0.30147
14	310	0.35035	67	711	0.42097	120	1112	0.46985	173	1704	0.52689
15	311	0.37752	68	712	0.41010	121	1114	0.46985	174	1705	0.54861
16	312	0.36665	69	714	0.42640	122	1115	0.51059	175	1706	0.54318
17	314	0.38566	70	715	0.44269	123	1116	0.51059	176	1707	0.33406
18	315	0.38430	71	716	0.44269	124	1202	0.80934	177	1801	0.64367
19	316	0.39652	72	802	0.71157	125	1203	0.52146	178	1802	0.58121
20	402	0.62465	73	803	0.45899	126	1204	0.47257	179	1803	0.30961
21	403	0.41553	74	804	0.43183	127	1205	0.47257	180	1804	0.53775
22	404	0.38023	75	805	0.43183	128	1206	0.47257	181	1805	0.55676
23	405	0.38023	76	806	0.43183	129	1207	0.52146	*182	1806	0.55676
24	406	0.38023	77	807	0.45084	130	1208	0.79848	*183	1807	0.34221
25	407	0.40196	78	808	0.69527	131	1210	0.48072	} DELETED 1981		
26	408	0.60564	79	810	0.41282	132	1211	0.48072			
27	410	0.37751	80	811	0.42368	133	1212	0.48072	184	1901	0.65725
28	411	0.31909	81	812	0.41553	134	1214	0.48072	185	1902	0.59207
29	412	0.38294	82	814	0.42911	135	1215	0.52146	186	1903	0.31776
30	414	0.39652	83	815	0.46985	136	1216	0.52146	187	1904	0.48886
31	415	0.41282	84	816	0.47529	137	1402	0.82021	188	1905	0.56763
32	416	0.41282	85	902	0.74416	138	1403	0.52960	*189	1906	0.56763
33	502	0.66267	86	903	0.48343	139	1404	0.48072	*190	1907	0.35035
34	503	0.42640	87	904	0.44269	140	1405	0.48072	} DELETED 1976		
35	504	0.39652	88	905	0.44269	141	1406	0.48072			
36	505	0.39652	89	906	0.44269	142	1407	0.52960	191	2001	1.88756
37	506	0.39652	90	907	0.47257	143	1408	0.80119	192	2002	0.99674
38	507	0.41282	91	908	0.71157	144	1410	0.49158	193	2003	0.32863
39	508	0.64909	92	910	0.42911	145	1411	0.49158	194	2004	0.16024
40	510	0.38838	93	911	0.45084	146	1412	0.49158	195	2005	0.35578
41	511	0.39924	94	912	0.42911	147	1414	0.49158	196	2101	3.59045
42	512	0.39109	95	914	0.45627	148	1415	0.53504	*197 {1906 1907} 0.91798 REV. '76		
43	514	0.40467	96	915	0.47800	149	1416	0.53504			
44	515	0.42097	97	916	0.48343	150	1502	0.84196	*198 {1806 1809} 0.89897 REV. '81		
45	516	0.42097	98	1002	0.77404	151	1503	0.54318			
46	602	0.67898	99	1003	0.49701	152	1504	0.49158			
47	603	0.44269	100	1004	0.45356	153	1505	0.49158			
48	604	0.41282	101	1005	0.45356	154	1506	0.49158			
49	605	0.41282	102	1006	0.45356	155	1507	0.54318			
50	606	0.41282	103	1007	0.44269	156	1508	0.82835			
51	607	0.42640	104	1008	0.75774	157	1510	0.50244			
52	608	0.66268	105	1010	0.44813	158	1511	0.50244			
53	610	0.39652	106	1011	0.46171	159	1512	0.50244			



AUG. '76 *A.Y.*