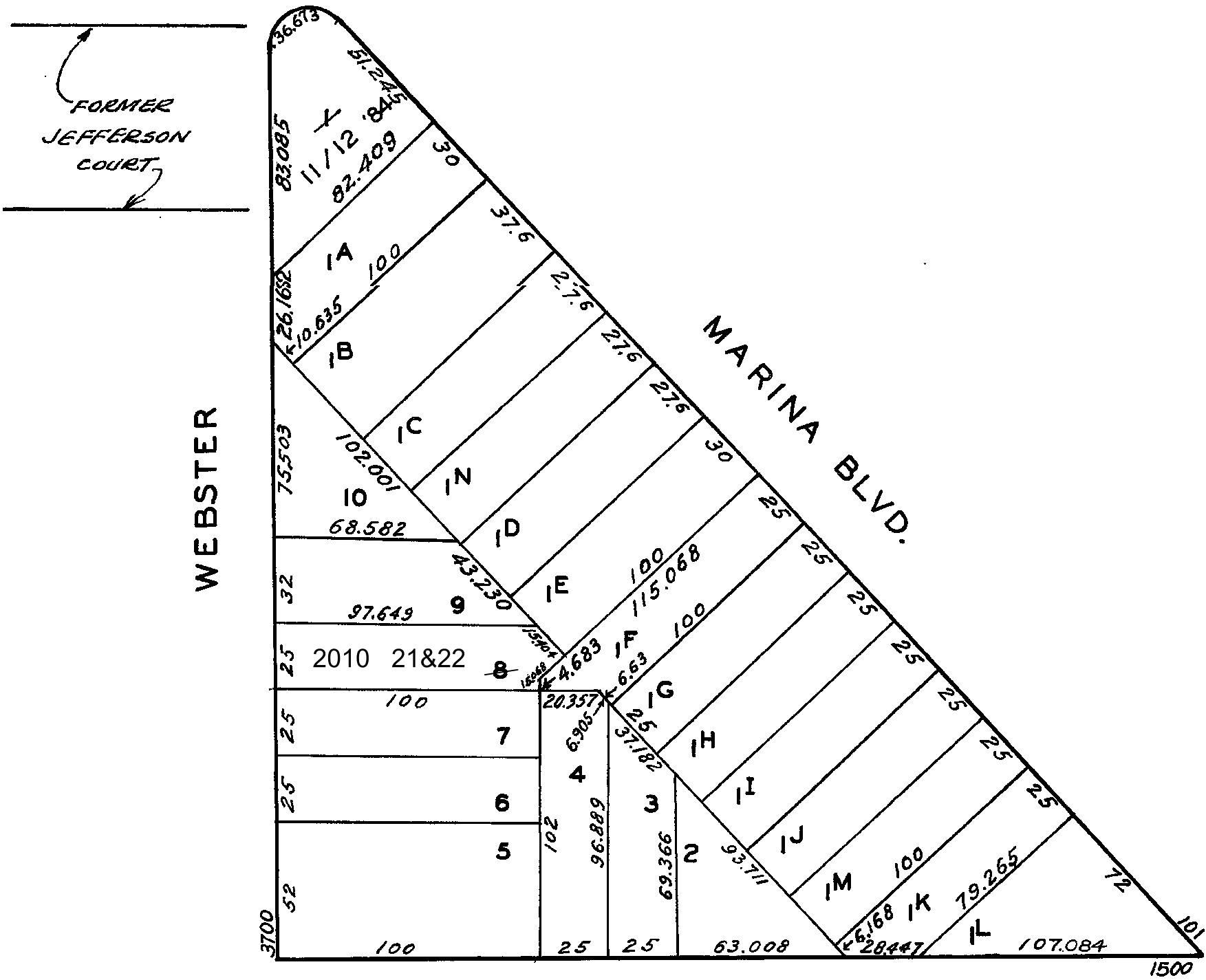
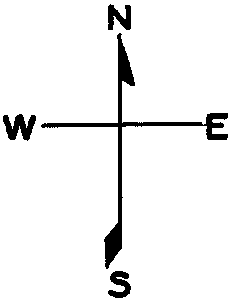


1 into 11&12 1984
lot8 into lots21&22 for 2010 roll

MARINA GARDENS

REVISED 1984
Revised 2010



WEBSTER

MARINA BLVD.

BEACH

199 MARINA BLVD.

A CONDOMINIUM

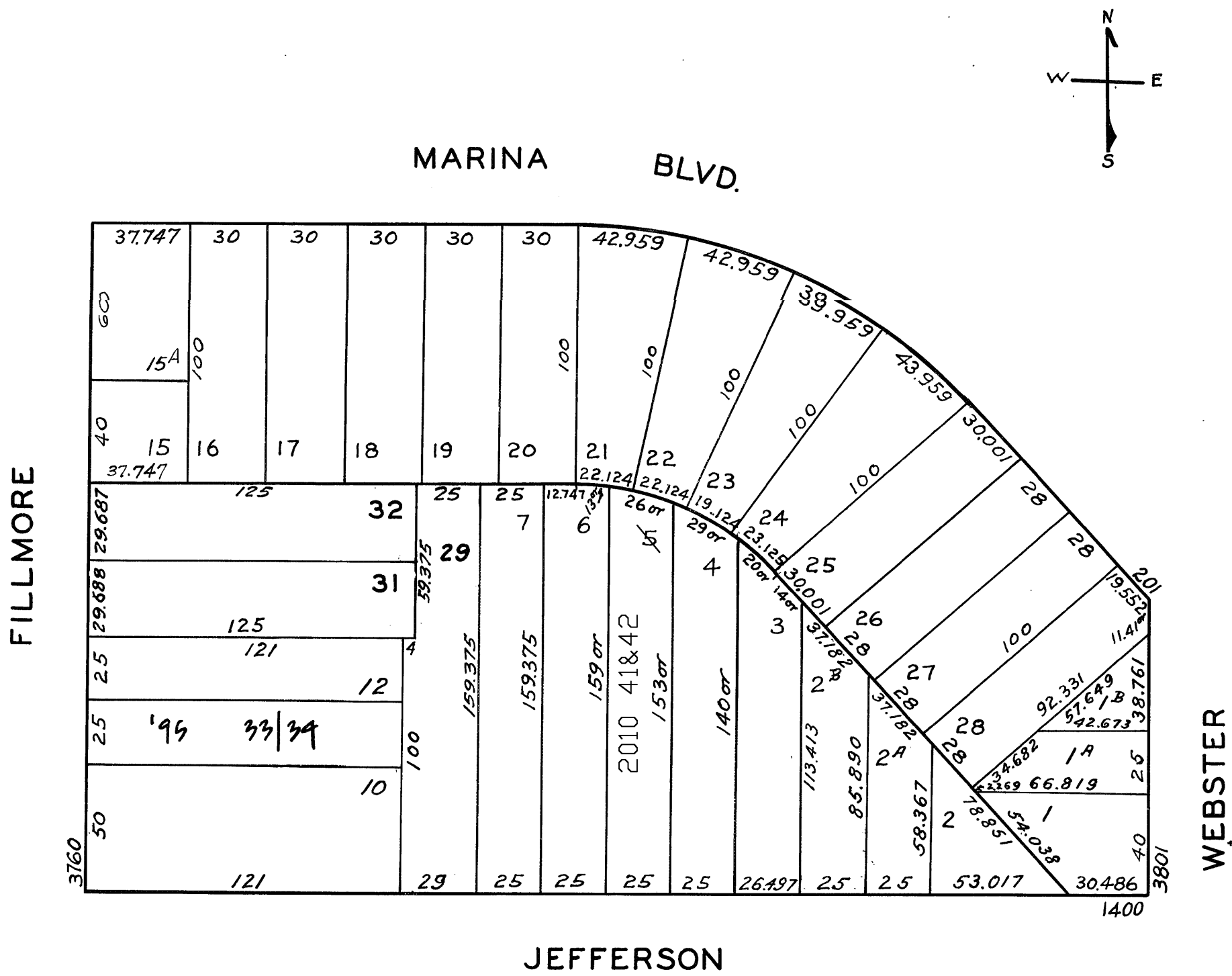
LOT UNIT COMM. AREA

11	1	1/2
12	2	1/2

MARINA GARDENS

REVISED '67
" '77
" '95
Revised 2010

Lot 9 Merged into lots 8,10,11,12 '935'
lot5 into lots41&42 for 2010 roll



3760-3762 FILLMORE ST		
ACONDOMINIUM		
LOT	UNIT	%COMM AREA
33	3760	44
34	3762	56

<u>A CONDOMINIUM</u>		
<u>LOT</u>	<u>UNIT</u>	<u>% COMM. AREA</u>
44	3725	48
45	3727	52

Lots 9 merged into lot 8 - 1944
" 19 " " 18 - "
" 21 " " 20 - "

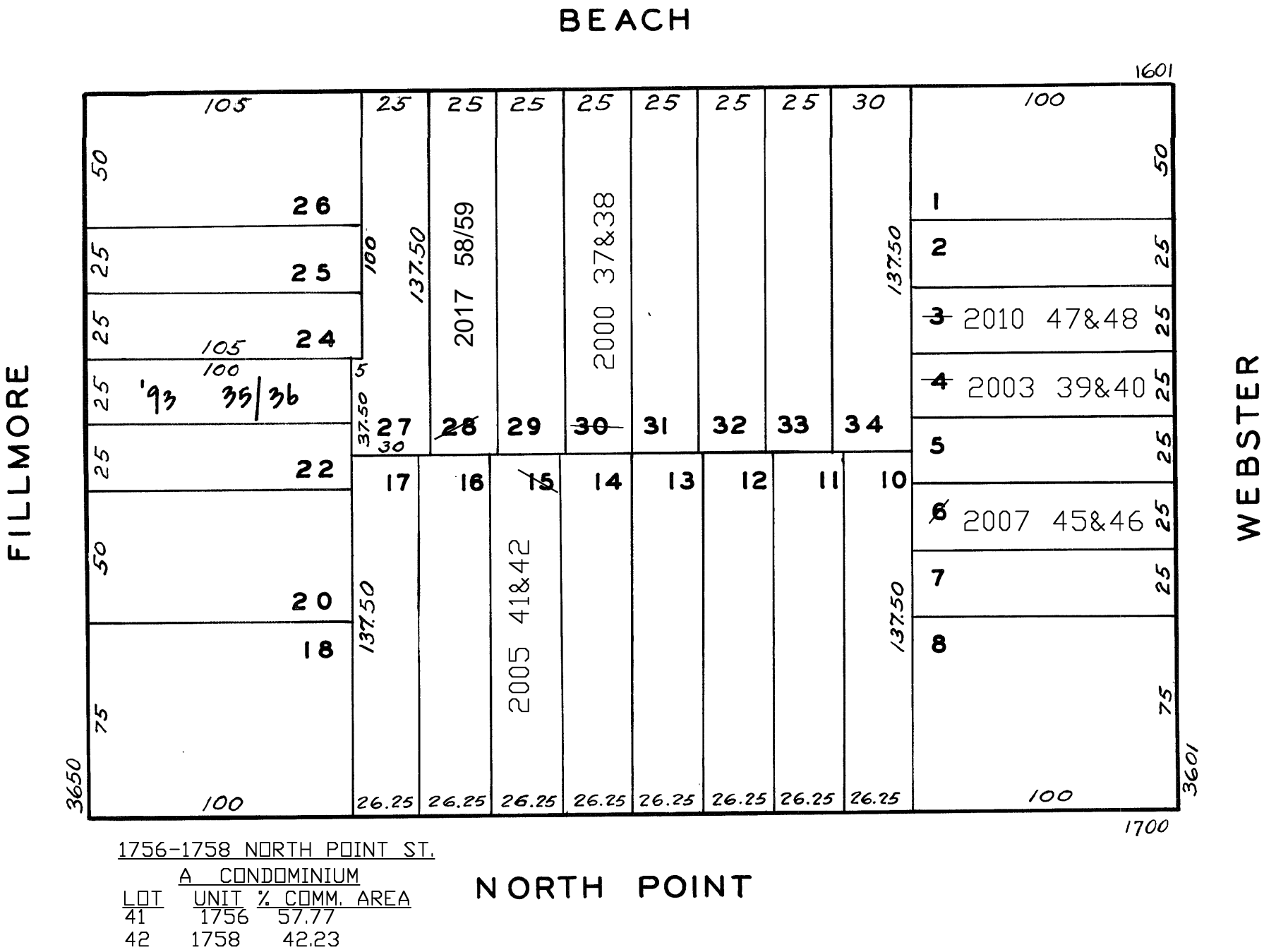
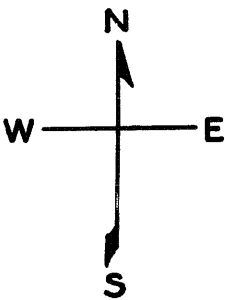
436E

© COPYRIGHT SAN FRANCISCO
CITY & COUNTY ASSESSOR 1995

MARINA GARDENS

lot30 into lots37&38 for 2000 roll
lot4 into lots39&40 for 2003 roll
lot15 into lots41&42 for 2005 roll
lot6 into lots45&46 for 2007 roll
lot3 into lots 47&48 for 2010 roll
Lot 28 into lots 58 & 59 for 2017 roll

Revised 1993
Revised 2000
Revised 2003
Revised 2005
Revised 2007
Revised 2010
REVISED 2017



1649-16551 BEACH ST.

A CONDOMINIUM		
LOT	UNIT	% COMM. AREA
37	1	54.09
38	2	45.91

3676 - 3678 FILLMORE ST.

A CONDOMINIUM		
LOT	UNIT	% COMM. AREA
35	1	55
36	2	45

3639-3641 WEBSTER ST.

A CONDOMINIUM		
LOT	UNIT	% COMM. AREA
39	3639	50
40	3641	50

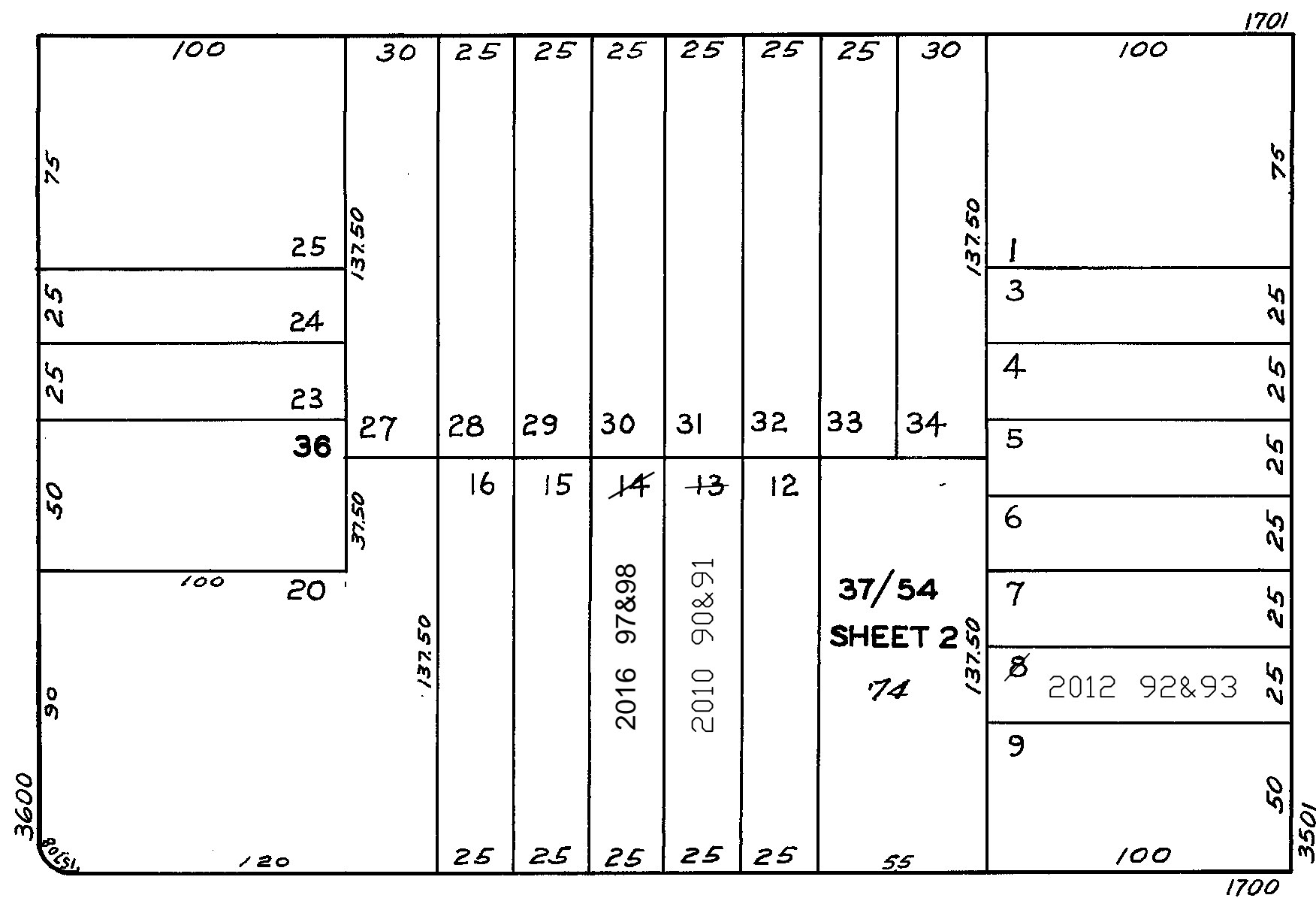
3627-3629 WEBSTER ST.

A CONDOMINIUM		
LOT	UNIT	% COMM. AREA
45	3627	75
46	3629	25

LOTS	INTO LOT
" 2	1 - 1944
" 17,18,19	20 - "
" 26	25 - "

REVISED	'63
"	'70
"	'74
DATE	2/26/10

FILLMORE



WEBSTER

BAY

1734 BAY STREET
A CONDOMINIUM

LOT NO.	UNIT NO.	COMMON AREA PERCENT INTEREST PER LOT
37	101	7.481
38	102	5.021
39	103	4.712
40	104	4.555
41	105	5.158
42	106	6.406
43	201	7.481
44	202	5.021
45	203	4.712
46	204	4.555
47	205	5.158
48	206	6.406
49	301	7.482
50	302	5.021
51	303	4.712
52	304	4.555
53	305	5.158
54	306	6.406

