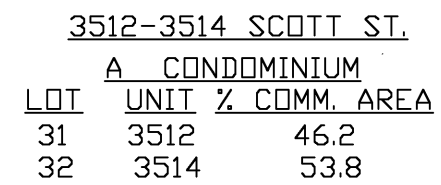


MARINA GARDENS

Revised 1993
Revised 1998
Revised 2004



<u>3542-3544 SCOTT ST.</u>			
<u>A CONDOMINIUM</u>			
<u>LOT</u>	<u>UNIT</u>	<u>% COMM.</u>	<u>AREA</u>
26	3542	33 1/3	
27	3544	33 1/3	
28	3544	1/2	33 1/3

<u>3524-3526 SCOTT ST.</u>		
<u>A CONDOMINIUM</u>		
<u>LOT</u>	<u>UNIT</u>	<u>% COMM. AREA</u>
29	3524	52.9
30	3526	47.1

3918 - 20 SCOTT ST.

A CONDOMINIUM

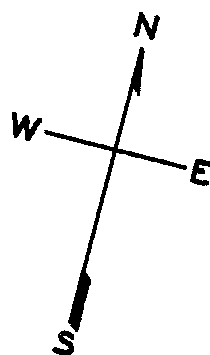
<u>LOT</u>	<u>UNIT</u>	<u>% COMM. AREA</u>
24	3918	50
25	3920	50

441^B

© COPYRIGHT SAN FRANCISCO
CITY & COUNTY ASSESSOR 1995
lot13 into lots36to38 for 2009 roll
lot3 into lots39/41 for 2010 roll
lot8 into lots42&43 for 2012 roll

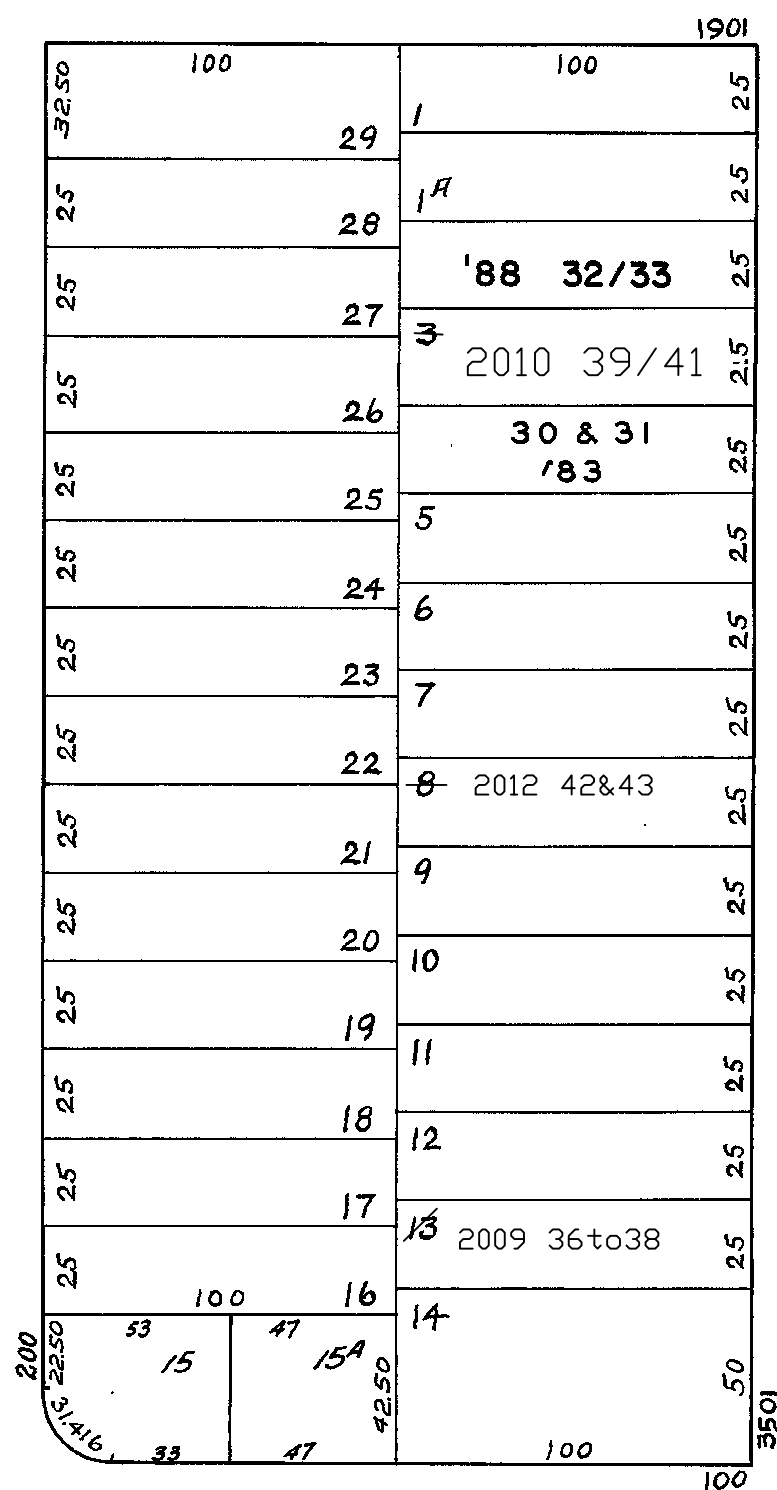
W A BLK. 411
MARINA GARDENS

REVISED '83
" '88
Revised 2009
Revised 2010
Revised 2012



BEACH

AVILA



CAPRA WAY

PIERCE

3567-3569 PIERCE ST.		
A CONDOMINIUM		
LOT NO.	UNIT NO.	% COMMON AREA
30	3569	47.62
31	3567	52.38

3579-81 PIERCE ST.		
A CONDOMINIUM		
LOT	UNIT	% COMM. AREA
32	3579	52.35
33	3581	47.65