

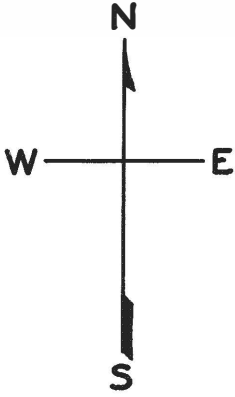
W A BLK. 338
MARINA GARDENS

© COPYRIGHT SAN FRANCISCO
CITY & COUNTY ASSESSOR 1995

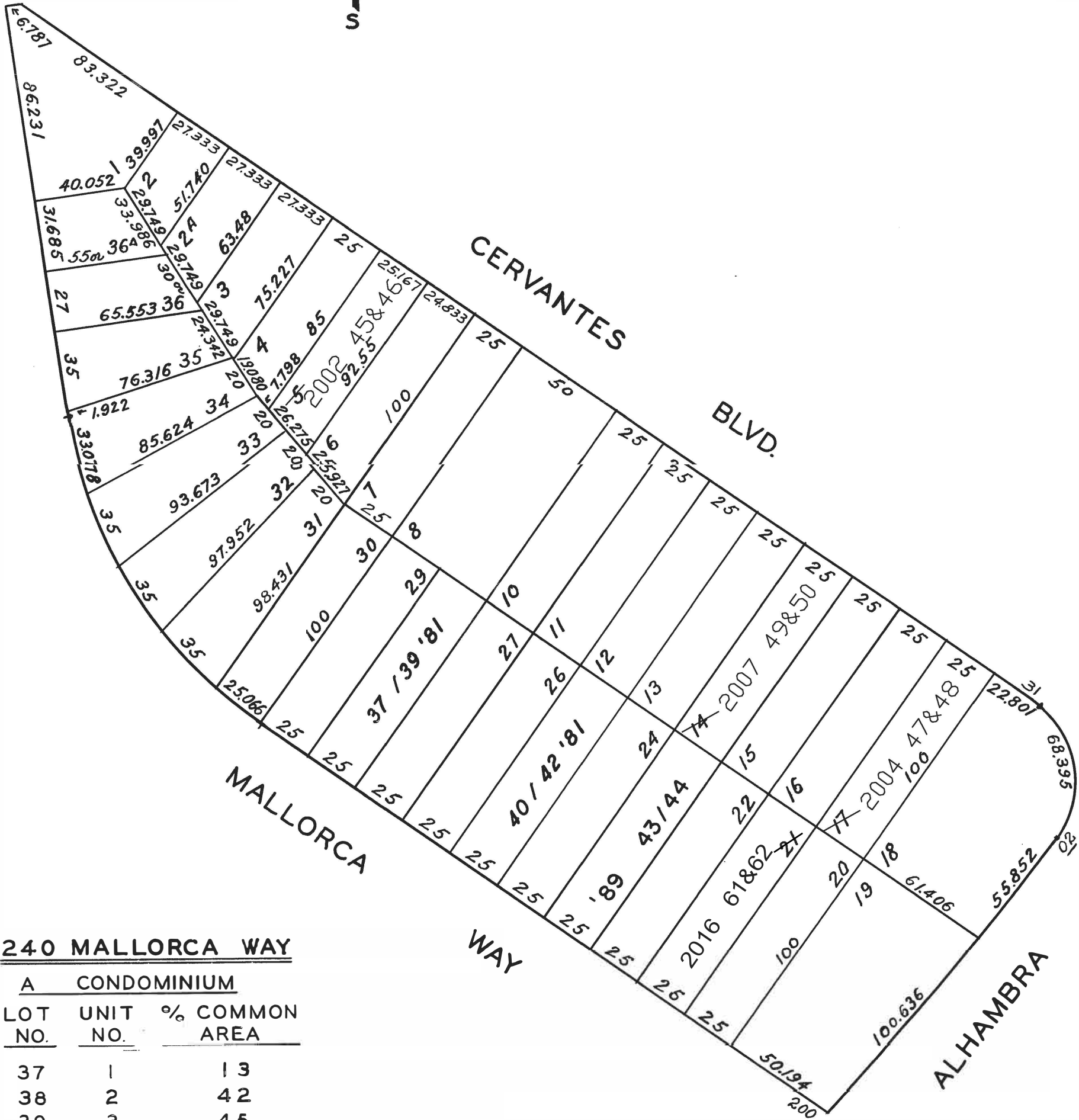
lot5 into lots45&46 for 2002 roll
lot17 into lots47&48 for 2004 roll
lot14 into lots49&50 for 2007 roll
lot13 into lots51&52 for 2009 roll
Lot 21 into lots 61 & 62 for 2016 roll

LOTS MERGED
LOTS INTO LOT
" 9 - 8 - 1944

REVISED 1981
" '89
Revised 2002
Revised 2004
Revised 2007
Revised 2009
REVISED 2016



BEACH



240 MALLORCA WAY

A CONDOMINIUM		
LOT NO.	UNIT NO.	% COMMON AREA
37	1	13
38	2	42
39	3	45

226-228 MALLORCA WAY

A CONDOMINIUM PROJECT		
LOT NO.	UNIT NO.	% COMMON AREA
40	1	10.52
41	2	43.22
42	3	46.26

218-220 MALLORCA WAY

A CONDOMINIUM		
LOT	UNIT	% COMM. AREA
43	218	47.694
44	220	52.306

45-45A CERVANTES BLVD. A CONDOMINIUM		
LOT	UNIT	% COMM. AREA
49	45	42
50	45A	58

75-77 CERVANTES BLVD. A CONDOMINIUM		
LOT	UNIT	% COMM. AREA
45	75	53
46	77	47

33-35 CERVANTES BLVD. A CONDOMINIUM		
LOT	UNIT	% COMM. AREA
47	3578	42.2
48	3580	57.8

2016 662