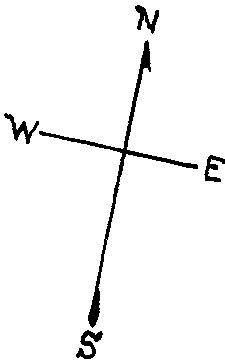


© COPYRIGHT SAN FRANCISCO  
CITY & COUNTY ASSESSOR 1995

lot21 into lots33&34 for 1998 roll  
lot19 into lots35&36 for 2004 roll  
lot28 into 37to39 for 2005 roll  
lot24 into lots40/42 for 2012 roll  
lot29 into lots43&44 for 2013 roll  
Lot 25 into lots 45&46 for 2016 roll

W A BLK. 415  
MARIN A GARDENS

Revised 1998  
Revised 2004  
Revised 2005  
Revised 2012  
Revised 2013  
REVISED 2016



CAPRA WAY

3430-3432 SCOTT ST.  
A CONDOMINIUM

LOT	UNIT	% COMM. AREA
33	3430	47.38
34	3432	52.62

3418-3420 SCOTT ST.  
A CONDOMINIUM

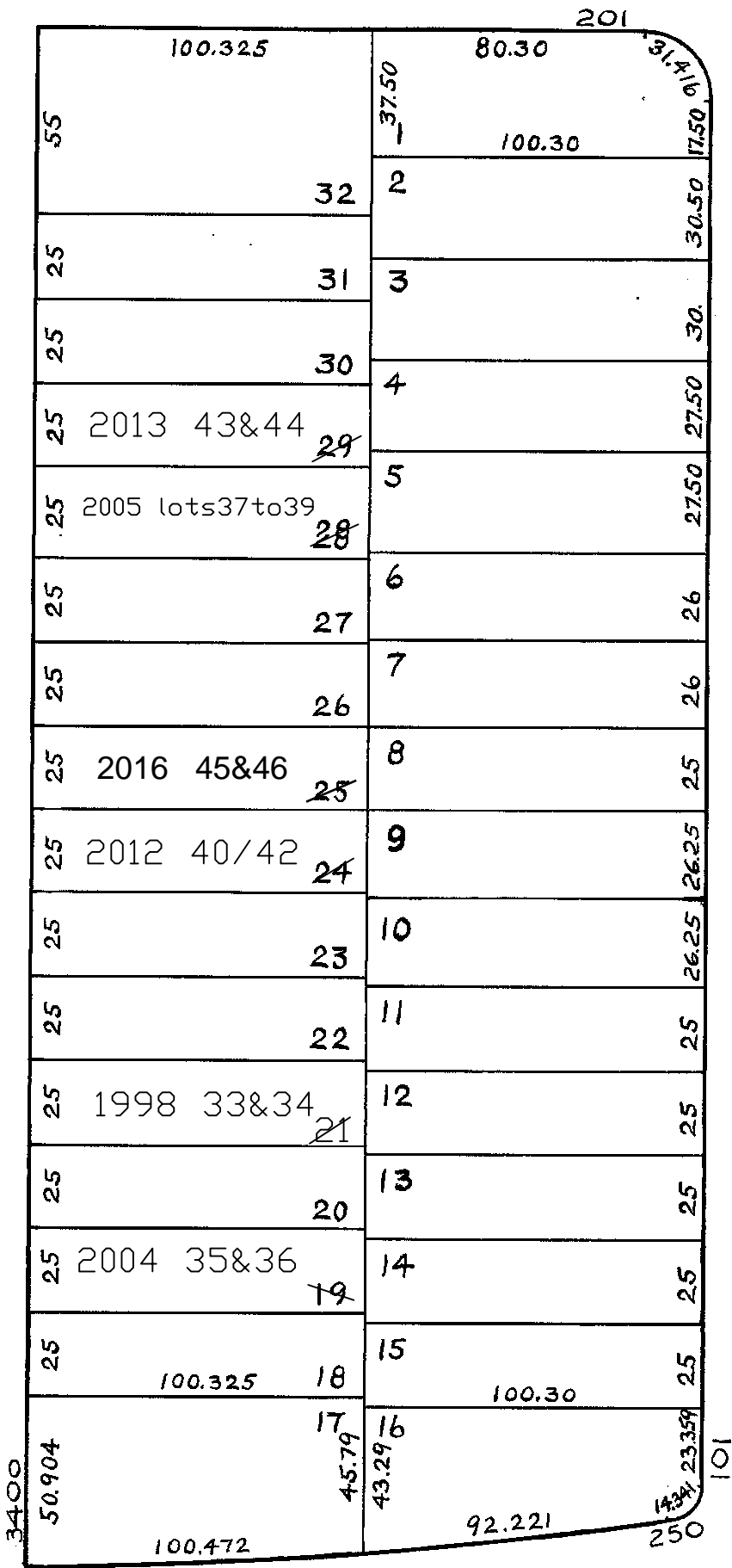
LOT	UNIT	% COMM. AREA
35	3418	50.76
36	3420	49.24

3464-3466 SCOTT ST.  
A CONDOMINIUM

LOT	UNIT	% COMM. AREA
37	3464	42.5
38	3464A	17.0
39	3466	40.5

SCOTT

AVILA



ALHAMBRA