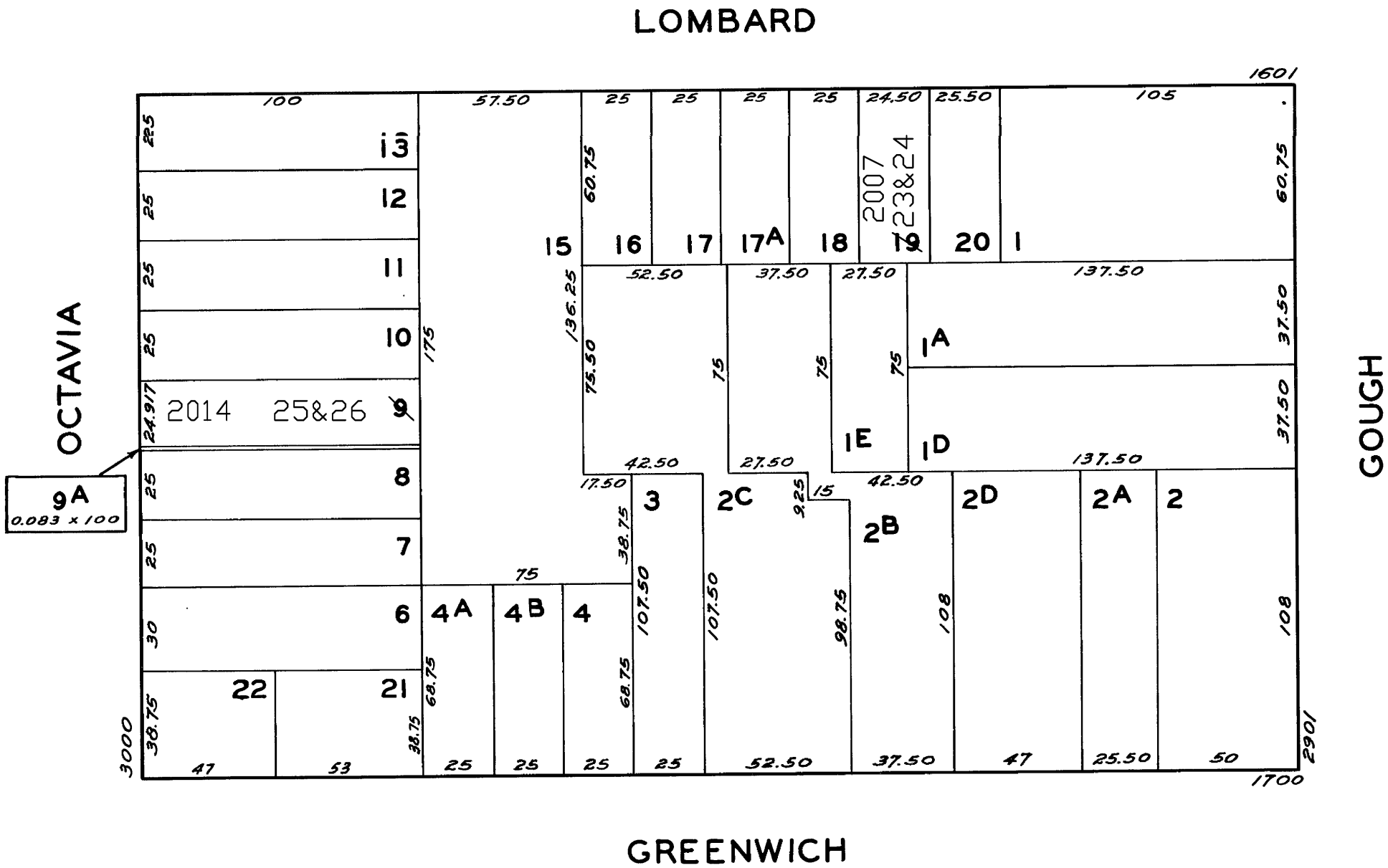
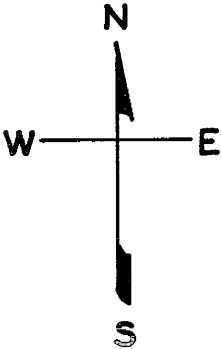


REVISED '68
Revised 2007
Revised 2014

LOTS MERGED
LOTS 18A, 19B INTO LOT 20A - 1942
" 1C " " 20 " "
" 1B " " 1 " "
" 1A, 20A " " 51 - 1943
" 16A " " 16 - 1944
" 19A " " 19 - 1951
lot19 into lots23&24 for 2007 roll
lot9 into lots25&26 for 2014 roll



1633-1635 LOMBARD ST.
A CONDOMINIUM

LOT	UNIT	% COMM. AREA
23	1633	43.3
24	1635	56.7