

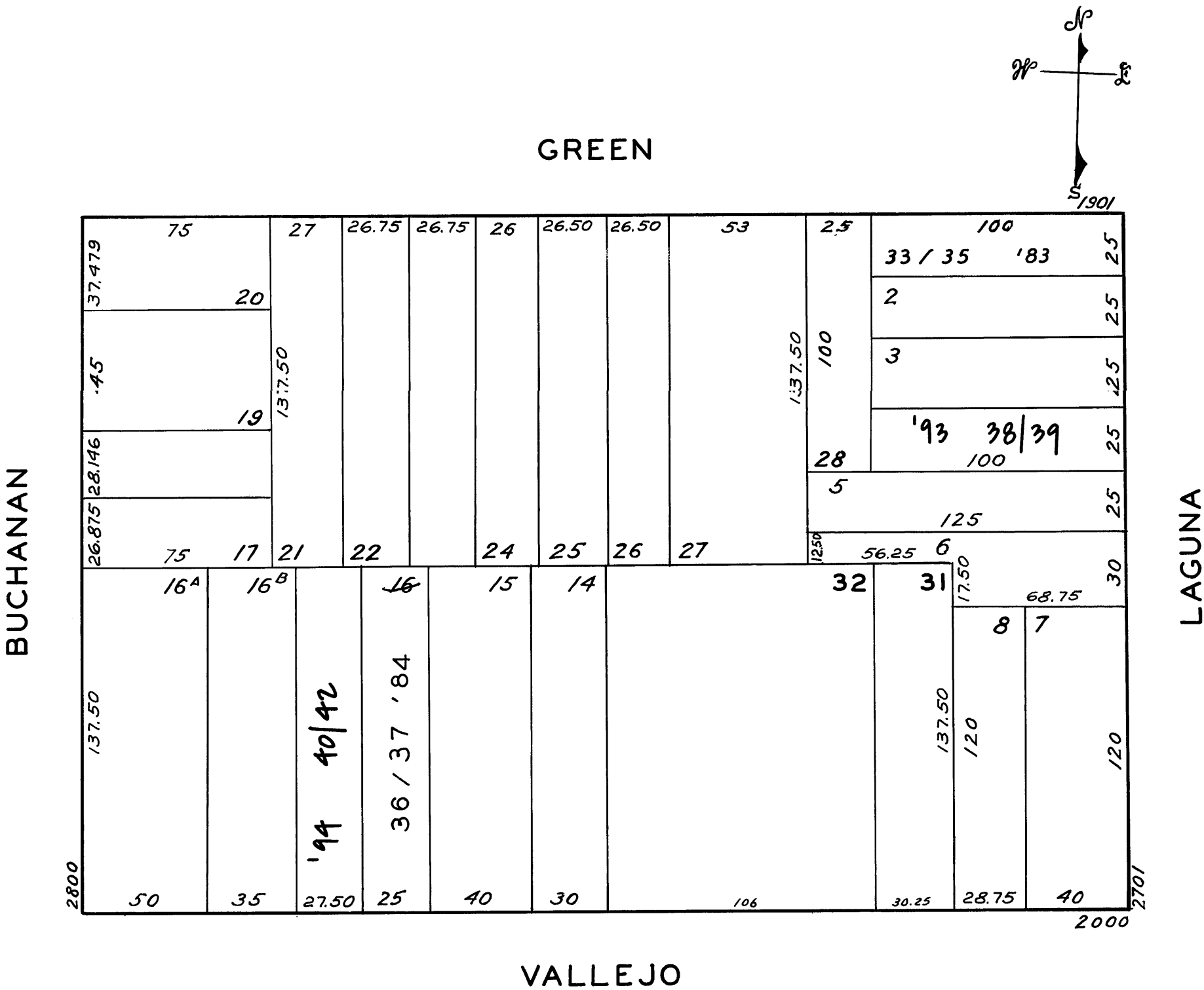
W A BLK. 243

LOTS MERGED  
LOTS 11 & 12 INTO LOTS 10 & 13-1915  
1 33/35 '83  
16 36/37 '84

REVISED	'66
"	'68
"	'69
"	'83
"	'87
"	'93
"	'94

2795, 2797 & 2799 LAGUNA ST.  
A CONDOMINIUM PROJECT

LOT NO.	UNIT NO.	% COMMON AREA
33	1	50.08
34	2	24.52
35	3	25.40



2068-70 VALLEJO ST.  
A CONDOMINIUM

LOT	UNIT	COMM. AREA
36	2068	64
37	2070	36

2743 - 2745 LAGUNA ST.  
A CONDOMINIUM

LOT	UNIT	% COMM. AREA
38	2745	46.76
39	2743	53.24

2072-2076 VALLEJO ST.  
A CONDOMINIUM

LOT	UNIT	% COMM. AREA
40	1	18.04
41	2	34.84
42	3	47.12