

© COPYRIGHT SAN FRANCISCO  
CITY & COUNTY ASSESSOR 1995

LOTS MERGED

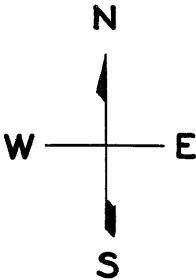
Lot 18 merged into 17 - 1944  
" 27 " " 26 - 1953  
lot17 into lots47to50 for 1998 roll  
lot22A into lots51&52 for 1998 roll  
lot23 into lots53to55 for 2009 roll

W A BLK.350

REVISED '57  
" '81  
" '83  
" '85  
Revised 1998  
Revised 2009

2401 JACKSON ST.

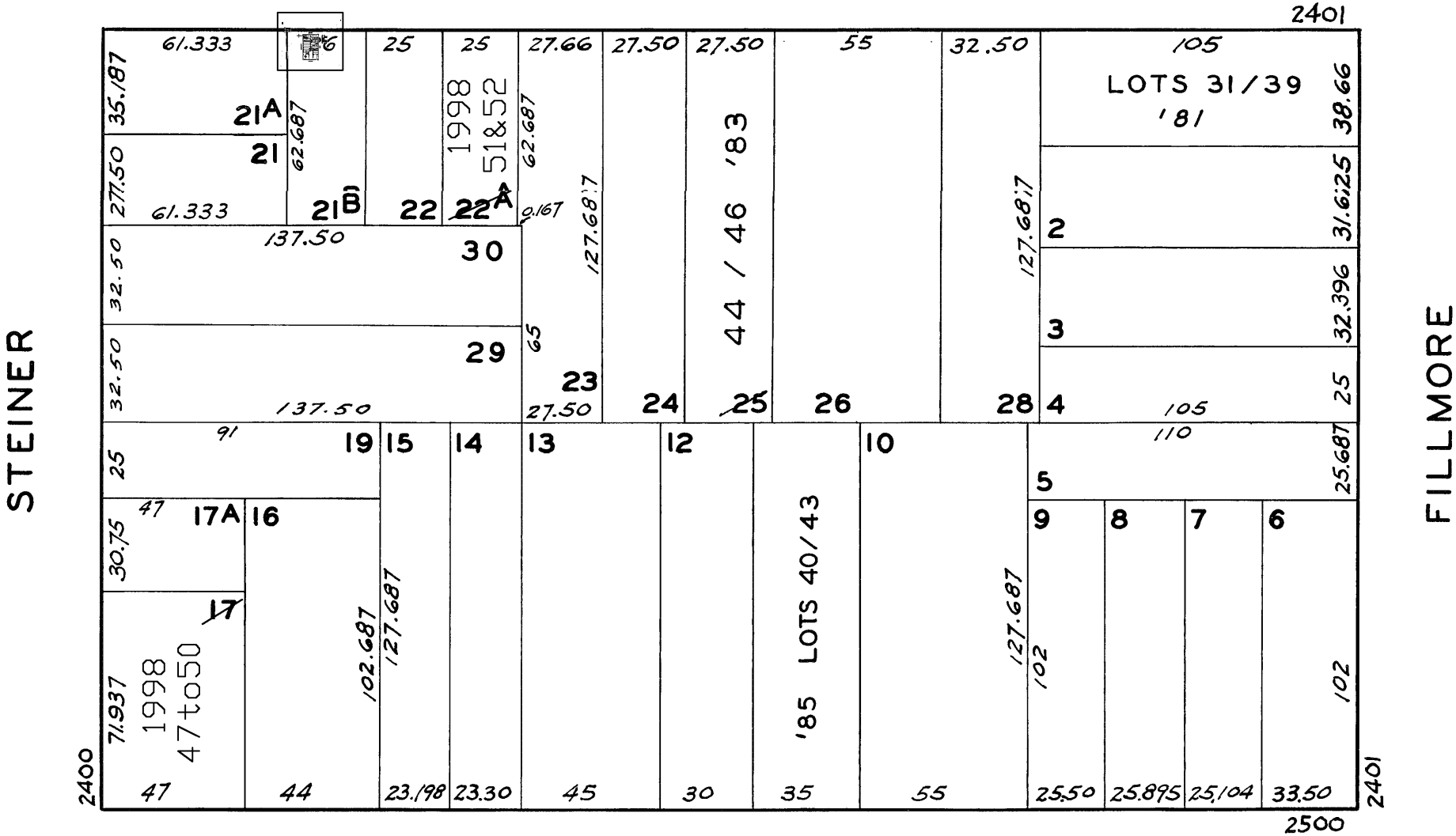
A CONDOMINIUM		
LOT NO.	UNIT NO.	% COMMON AREA
31	1	11
32	2	13
33	3	13
34	4	13
35	5	13
36	6	13
37	7	13
38	8	4
39	9	7



2447-49-51 JACKSON ST.

A CONDOMINIUM		
LOT	UNIT	% COMM AREA
44	2447	42.365
45	2449	38.934
46	2451	18.701

JACKSON



WASHINGTON

2400 STEINER ST.		
A CONDOMINIUM		
LOT	UNIT	% COMM. AREA
47	1	41.99
48	2	21.18
49	3	14.35
50	4	22.48

2467-2469 JACKSON ST.		
A CONDOMINIUM		
LOT	UNIT	% COMM. AREA
51	2467	61
52	2469	39

2542-2544 WASHINGTON ST.

A CONDOMINIUM		
LOT NO.	UNIT NO.	% COMMON AREA
40	2542	39.35
41	2544C	8.52
42	2544B	24.81
43	2544A	27.32