

LOTS MERGED

lot9B into lots52&53 for 2002 roll
lot5 into lots54&55 for 2004 roll

2265 - 2267 CLAY STREET
A CONDOMINIUM

<u>LOT NO.</u>	<u>UNIT NO.</u>	<u>% COMMON AREA</u>
45	2265	57.403
46	2267	42.597

REVISED '57

" '74

11 78

" '80

" '81

11 182

" '85
1985

" '88

Revised 2002

Revised 2004

2209 CLAY ST.

A CONDOMINIUM

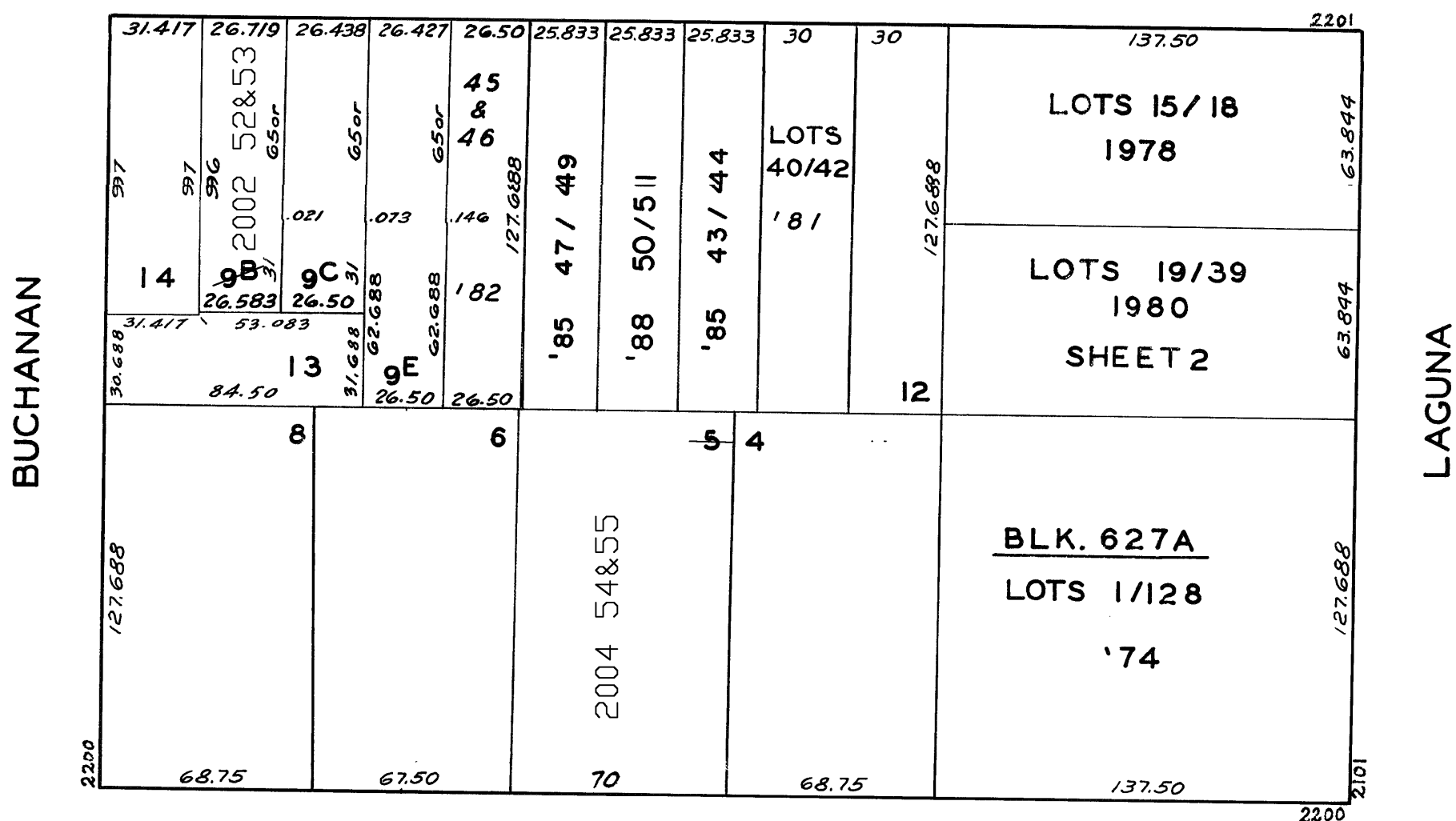
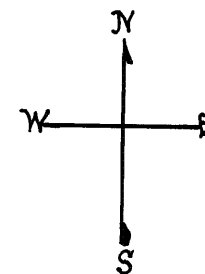
<u>LOT NO.</u>	<u>UNIT NO.</u>	<u>% COMMON AREA</u>
40	1	18.911
41	2	40.032
42	3	41.057

2220-2222 SACRAMENTO ST.

A CONDOMINIUM

<u>LOT</u>	<u>UNIT</u>	<u>% COMM. AREA</u>
54	2220	50
55	2222	50

CLAY



SACRAMENTO

2247 - 2249 CLAY ST.

A CONDOMINIUM

<u>LOT NO</u>	<u>UNIT NO</u>	<u>% COMMON AREA</u>
43	1	50
44	2	50

2259 - 61 - 63 CLAY ST.

A CONDOMINIUM

LOT NO	UNIT NO	% COMMON AREA
47	2261	37
48	2263	9
49	2259	54

2151 LAGUNA ST.

A CONDOMINIUM

1978		
<u>LOT NO.</u>	<u>UNIT NO.</u>	<u>%COMMON AREA</u>
15	1	25
16	2	25
17	3	25
18	4	25

2253-2255 CLAY ST.

A CONDOMINIUM

LOT	UNIT	%COMM. AREA
50	2253	43.41
51	2255	56.59

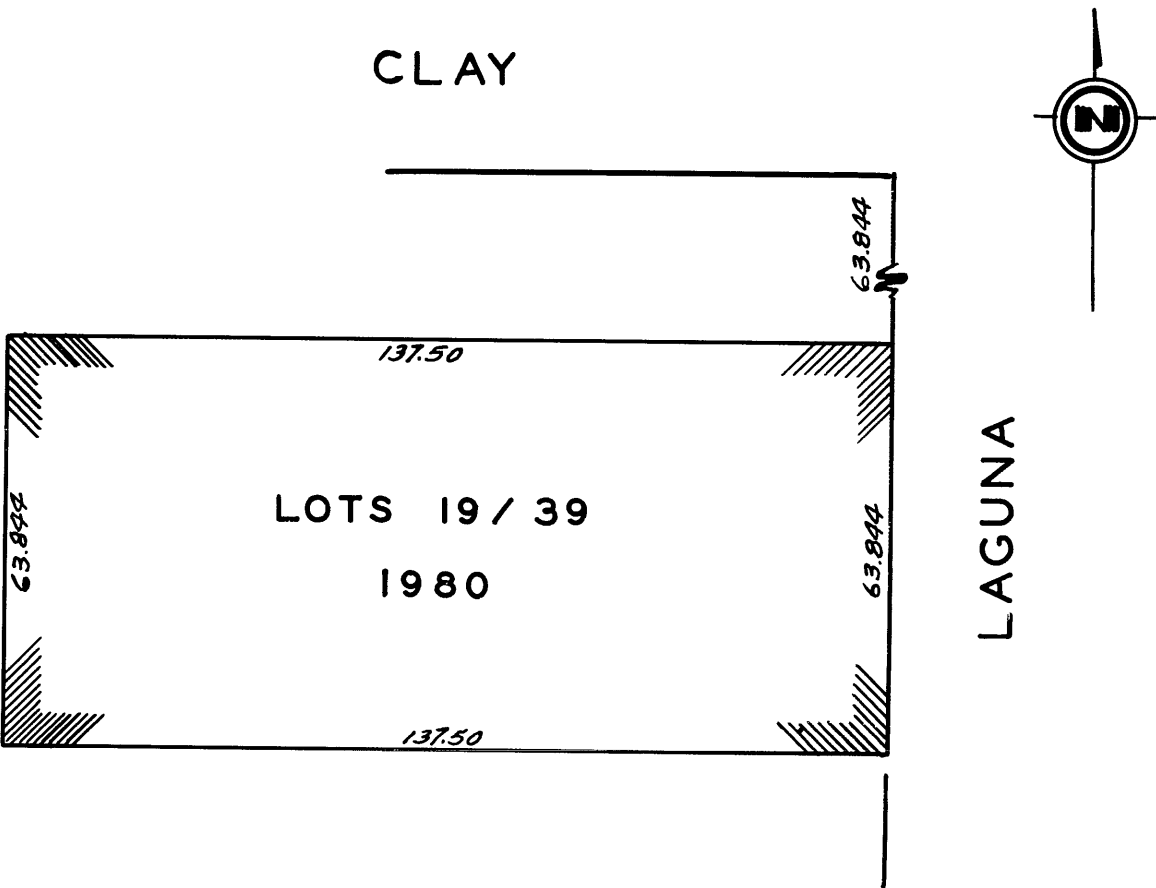
2283-2285 CLAY ST.

A CONDOMINIUM

LOT	UNIT	% COMM. AREA
52	2283	48.02
53	2285	51.98

2121 LAGUNA ST.
A CONDOMINIUM

LOT NO.	UNIT NO.	% COMMON AREA
19	200	4.515
20	100	6.786
21	300	3.897
22	700	4.982
23	400	3.897
24	600	5.272
25	500	3.984
26	220	4.515
27	210	6.786
28	230	3.897
29	270	4.982
30	240	3.897
31	260	5.272
32	250	3.984
33	320	4.515
34	310	6.786
35	330	3.897
36	370	4.982
37	340	3.898
38	360	5.272
39	350	3.984



LAGUNA TOWER
(PACIFIC HEIGHTS TOWER)
A CONDOMINIUM

627A

W. A. BLK 237

THE OWNER OF EACH UNIT SHALL OWN AN UNDIVIDED INTEREST
IN THE COMMON AREAS AS SHOWN BELOW:

UNIT OWNERSHIP OF COMMON AREA PERCENTAGE FACTORS

Unit	Factor
1 BEDROOM UNIT	-1.0/151
2 BEDROOM UNIT	-1.2/151
2 BEDROOM UNIT (PENTHOUSE)	-2.0/151
3 BEDROOM UNIT (PENTHOUSE)	-2.5/151

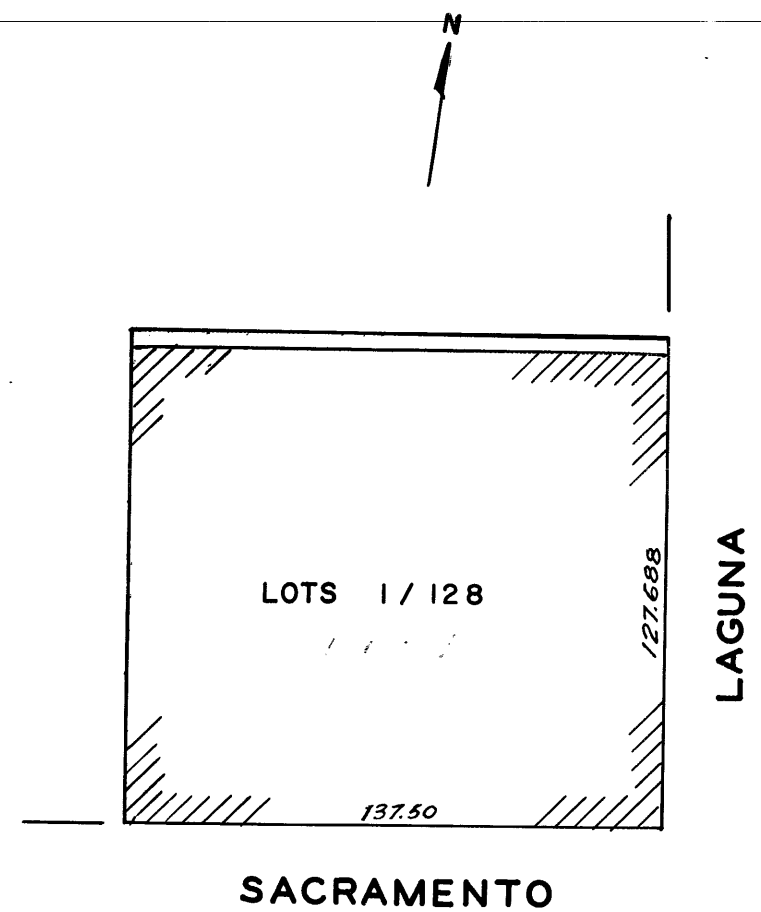
UNIT TABULATION BY BEDROOMS

1 BEDROOM UNITS - 104, 105, 106, 107, 204, 205, 206, 207, 304, 305, 306, 307, 404, 405, 406, 407, 504, 505, 506, 507, 604, 605, 606, 607, 704, 705, 706, 707, 804, 805, 806, 807, 904, 905, 906, 907, 1004, 1005, 1006, 1007, 1104, 1105, 1106, 1107, 1204, 1205, 1206, 1207, 1304, 1305, 1306, 1307, 1404, 1405, 1406, 1407, 1504, 1505, 1506, 1507. (60 Units)

2 BEDROOM UNITS - 101, 102, 103, 108, 201, 202, 203, 208, 301, 302, 303, 308, 401, 402, 403, 408, 501, 502, 503, 508, 601, 602, 603, 608, 701, 702, 703, 708, 801, 802, 803, 808, 901, 902, 903, 908, 1001, 1002, 1003, 1008, 1101, 1102, 1103, 1108, 1201, 1202, 1203, 1208, 1301, 1302, 1303, 1308, 1401, 1402, 1403, 1408, 1501, 1502, 1503, 1508. (60 Units)

2 BEDROOM PENTHOUSE UNITS - 1604, 1704. (2 Units)

3 BEDROOM PENTHOUSE UNITS - 1601, 1602, 1603, 1701, 1702, 1703. (6 Units)



LOT NO.	UNIT NO.	LOT NO.	UNIT NO.	LOT NO.	UNIT NO.	LOT NO.	UNIT NO.	LOT NO.	UNIT NO.
1	101	27	403	53	705	79	1007	105	1401
2	102	28	404	54	706	80	1008	106	1402
3	103	29	405	55	707	81	1101	107	1403
4	104	30	406	56	708	82	1102	108	1404
5	105	31	407	57	801	83	1103	109	1405
6	106	32	408	58	802	84	1104	110	1406
7	107	33	501	59	803	85	1105	111	1407
8	108	34	502	60	804	86	1106	112	1408
9	201	35	503	61	805	87	1107	113	1501
10	202	36	504	62	806	88	1108	114	1502
11	203	37	505	63	807	89	1201	115	1503
12	204	38	506	64	808	90	1202	116	1504
13	205	39	507	65	901	91	1203	117	1505
14	206	40	508	66	902	92	1204	118	1506
15	207	41	601	67	903	93	1205	119	1507
16	208	42	602	68	904	94	1206	120	1508
17	301	43	603	69	905	95	1207	121	1601
18	302	44	604	70	906	96	1208	122	1602
19	303	45	605	71	907	97	1301	123	1603
20	304	46	606	72	908	98	1302	124	1604
21	305	47	607	73	1001	99	1303	125	1701
22	306	48	608	74	1002	100	1304	126	1702
23	307	49	701	75	1003	101	1305	127	1703
24	308	50	702	76	1004	102	1306	128	1704
25	401	51	703	77	1005	103	1307		
26	402	52	704	78	1006	104	1308		