

Lots 19 + 20 merged into lot 18-1926

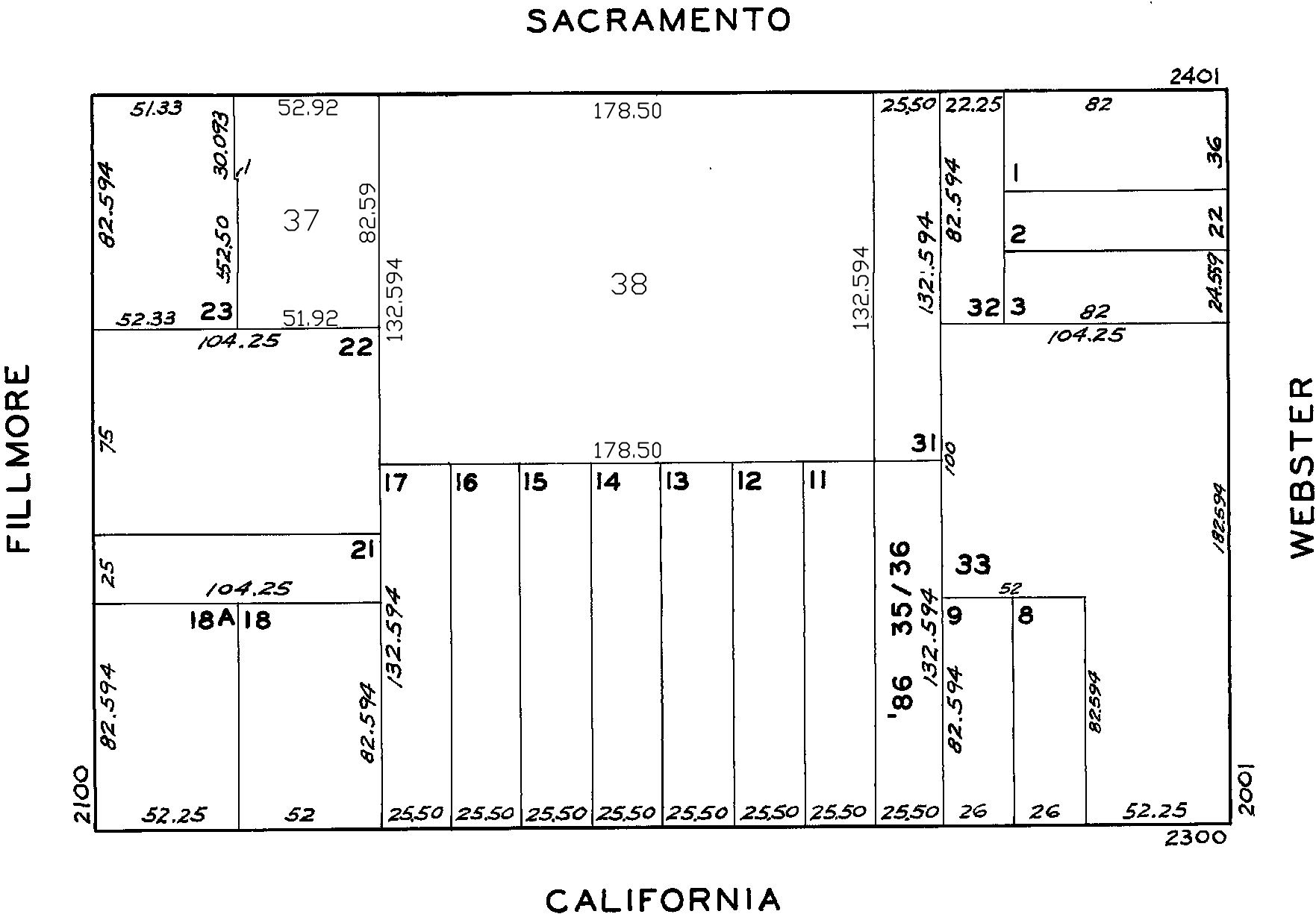
© COPYRIGHT SAN FRANCISCO
CITY & COUNTY ASSESSOR 1995
lot34 into lots37&38 for 2010 roll

636

W A BLK. 314

N
W—+—E
S

REVISED	'63
S	'66
"	'86
Revised	2010



2326 CALIFORNIA ST.		
A CONDOMINIUM		
LOT	UNIT	% COMM. AREA
35	200	50
36	300	50