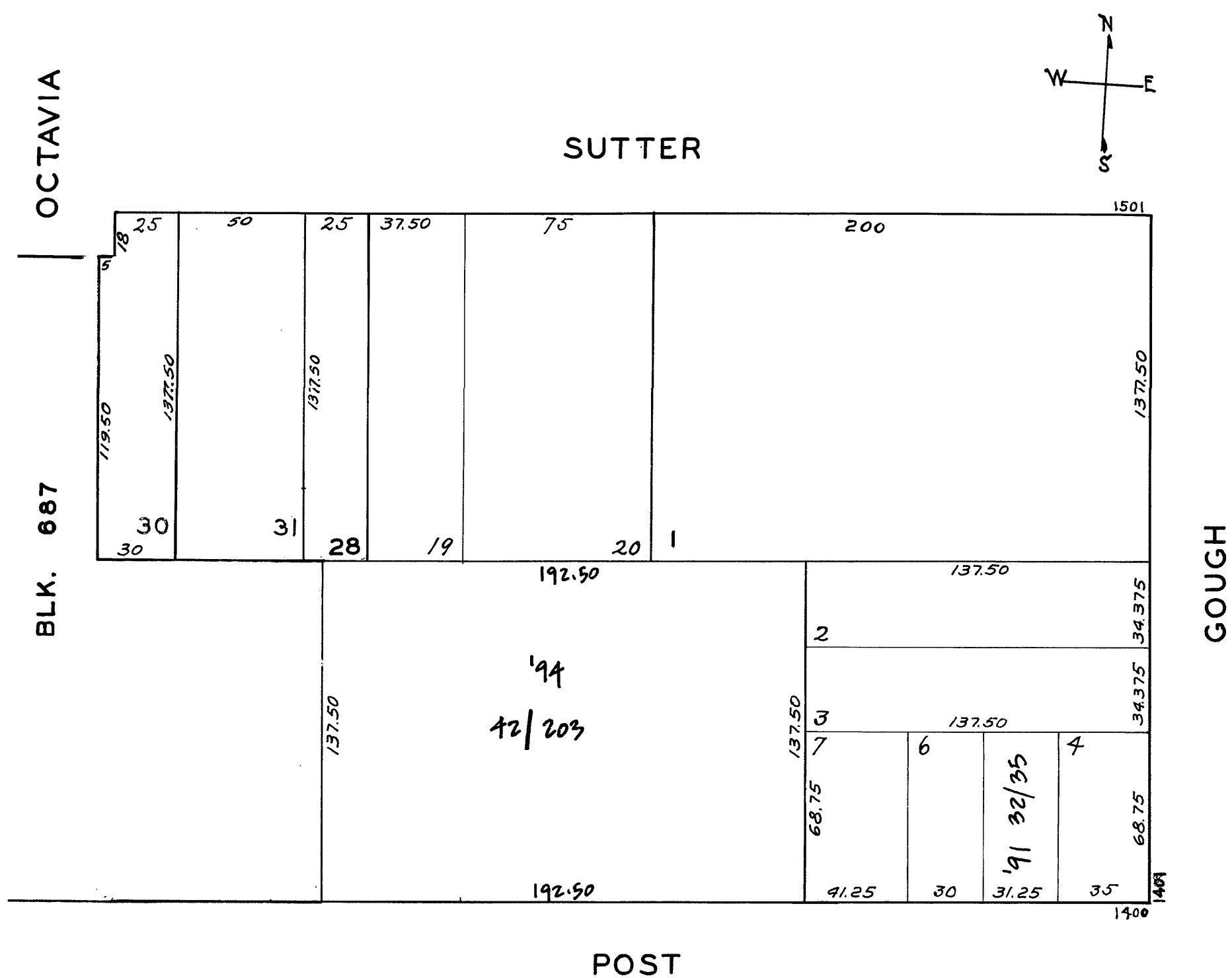


lots 8&9 into lots42to203 for 1994 roll
lot20 into lots206to233 for 2009 roll

REVISÉD '58

Revised 2009



1402-1404 Post St.

A CONDOMINIUM

| LOT | UNIT | % COMM. AREA |
|-----|------|--------------|
| 32 | A | 13.64 |
| 33 | B | 19.11 |
| 34 | C | 37.76 |
| 35 | D | 29.49 |