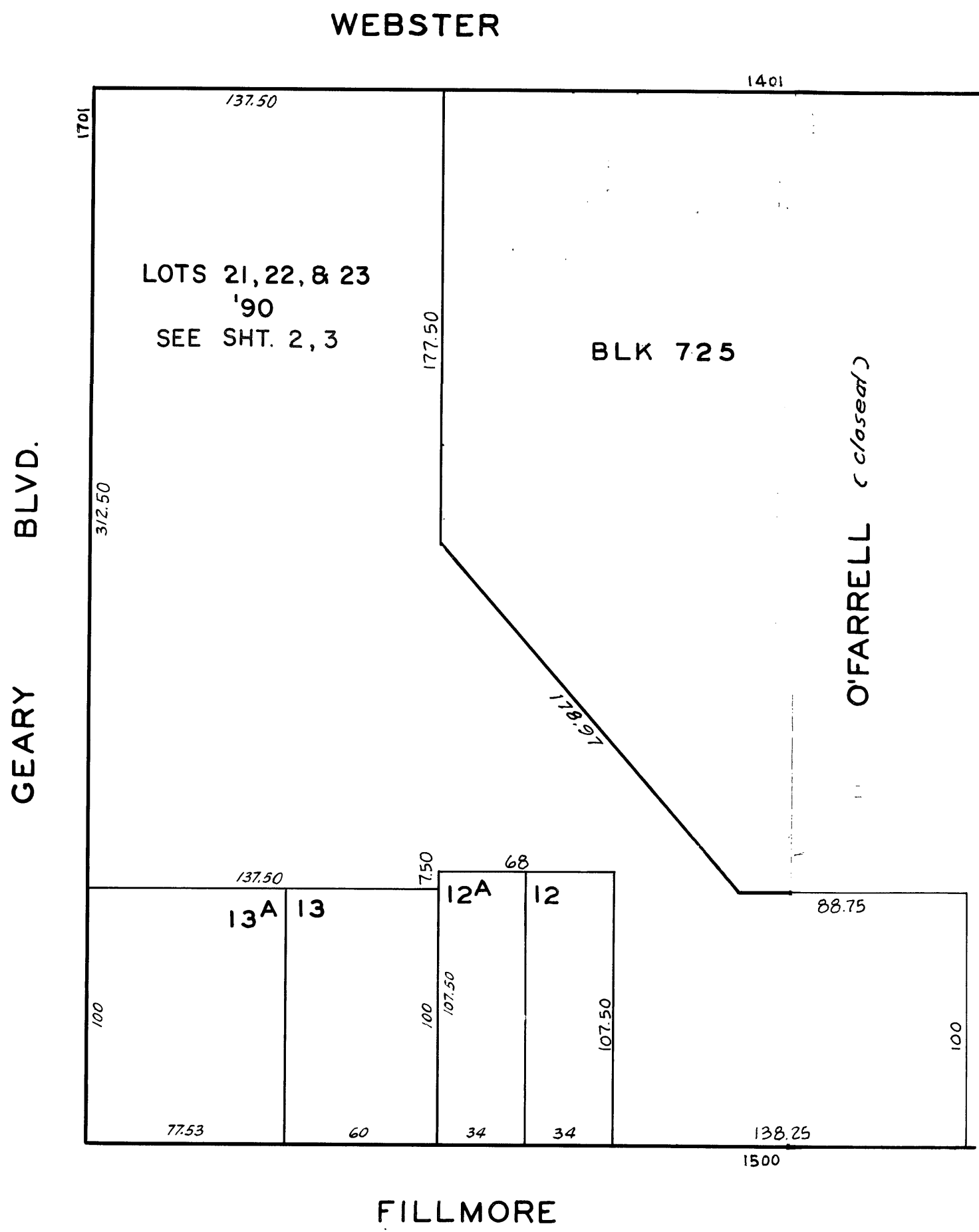
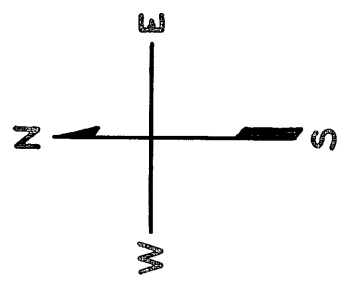
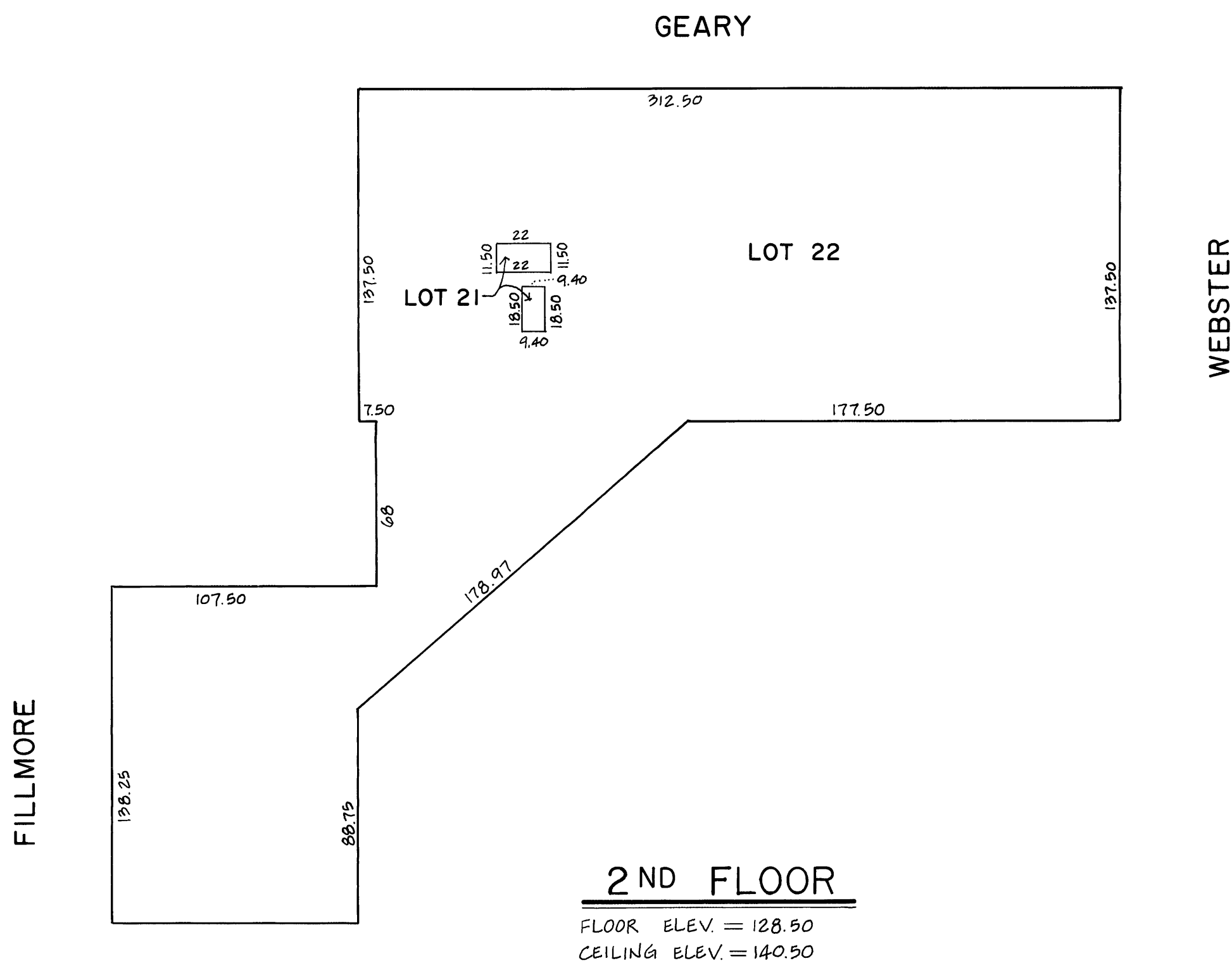
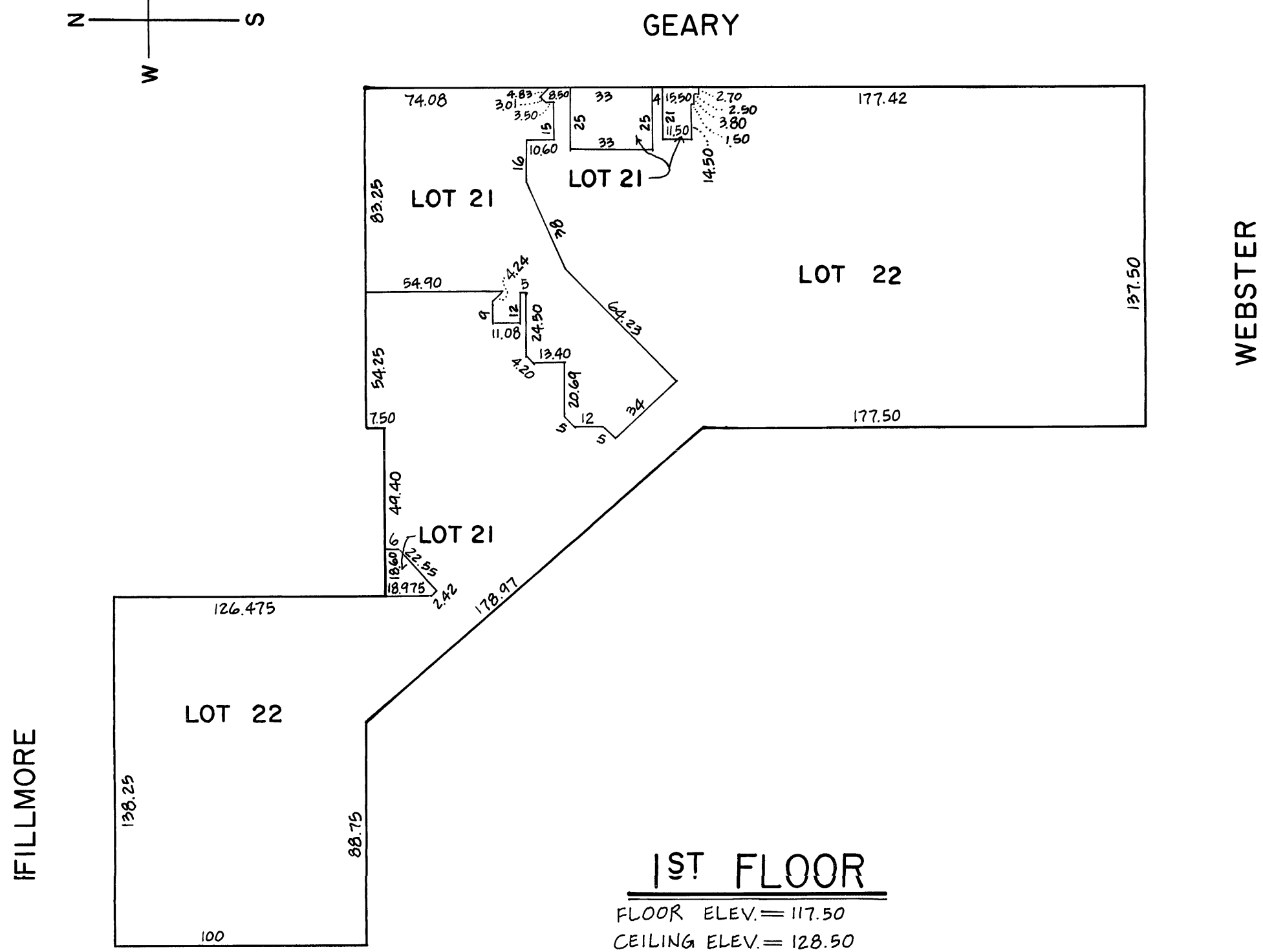
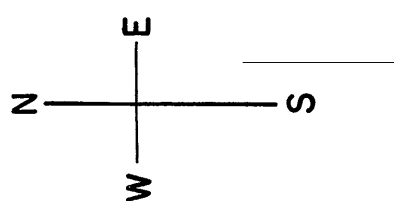
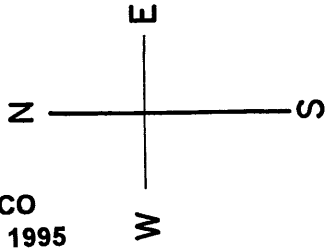


REVISED 1983  
" '90

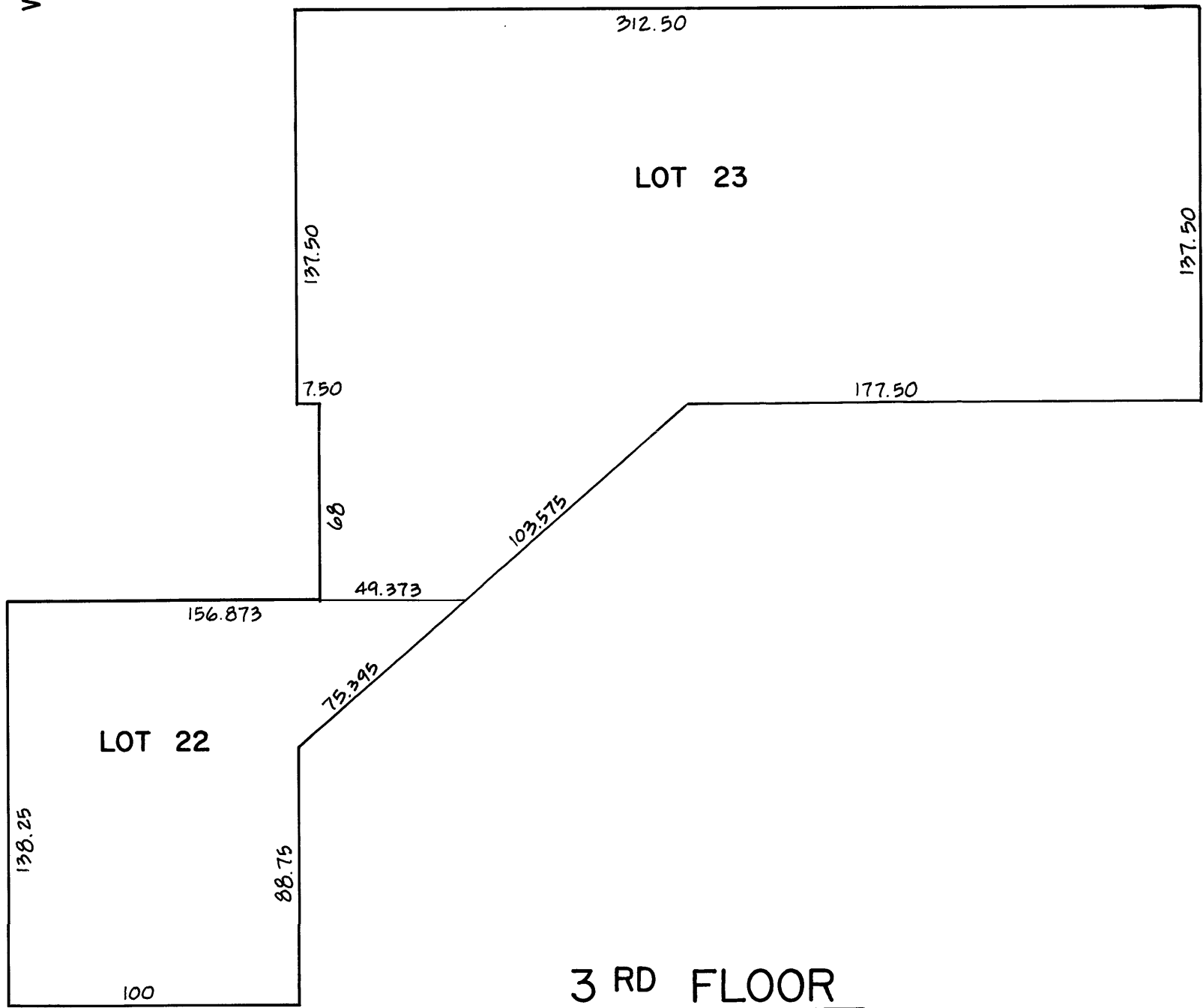




© COPYRIGHT SAN FRANCISCO  
CITY & COUNTY ASSESSOR 1995



FILLMORE

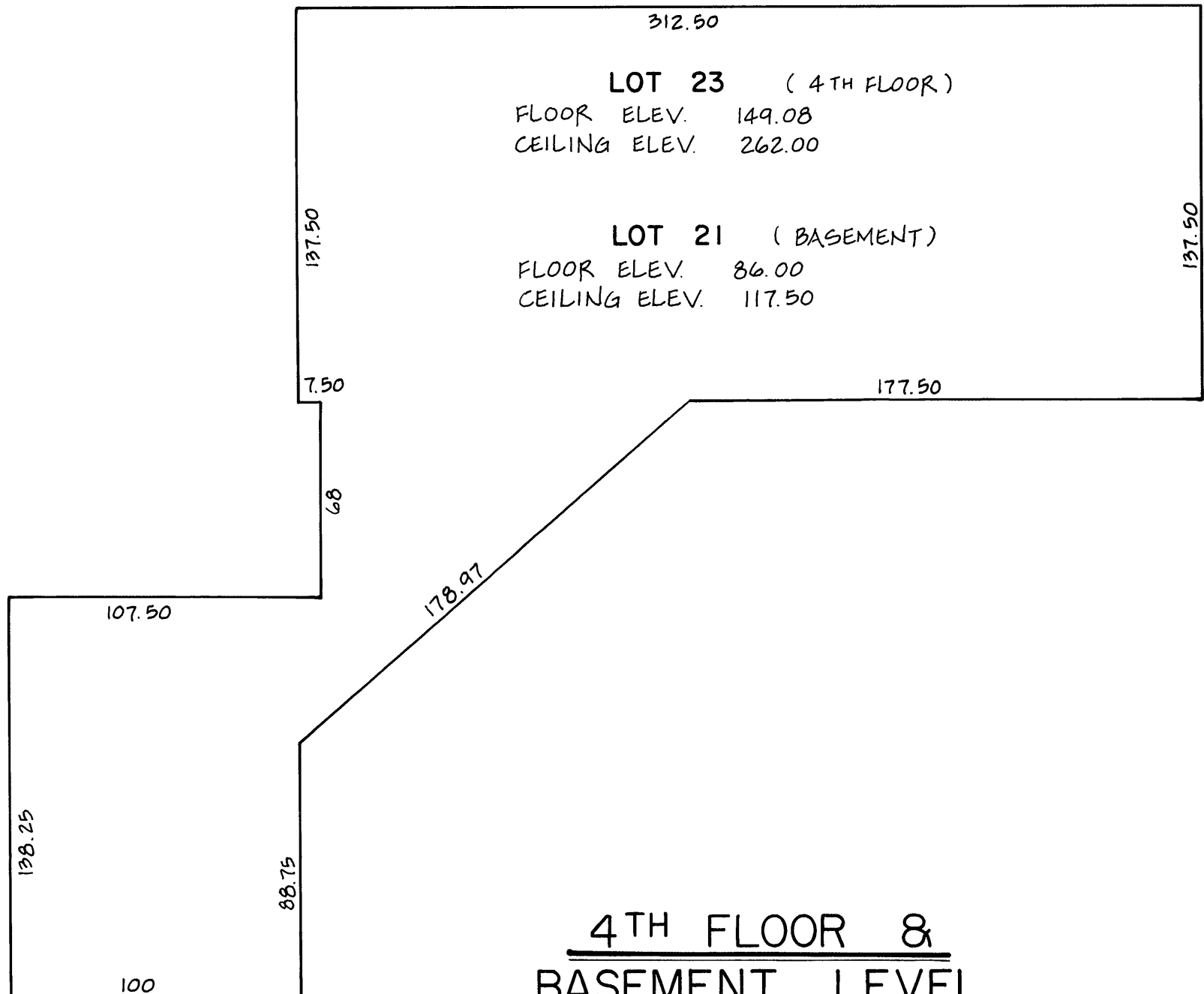


## 3 RD FLOOR

FLOOR ELEV. 140.50  
CEILING ELEV. 149.08

GEARY

FILLMORE



## 4TH FLOOR & BASEMENT LEVEL

LOT 23 (4TH FLOOR)  
FLOOR ELEV. 149.08  
CEILING ELEV. 262.00

LOT 21 (BASEMENT)  
FLOOR ELEV. 86.00  
CEILING ELEV. 117.50

WEBSTER

WEBSTER