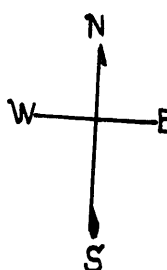


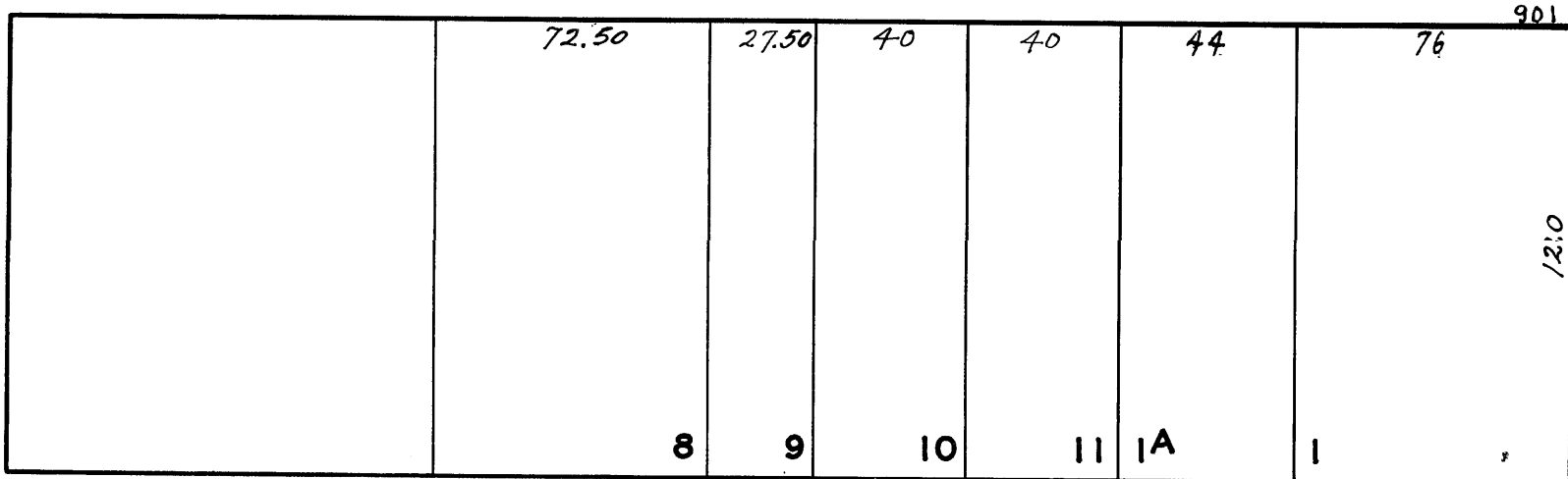
LOTS MERGED
LOTS INTO LOT
5 - 4 - 1944

W A BLK. 10

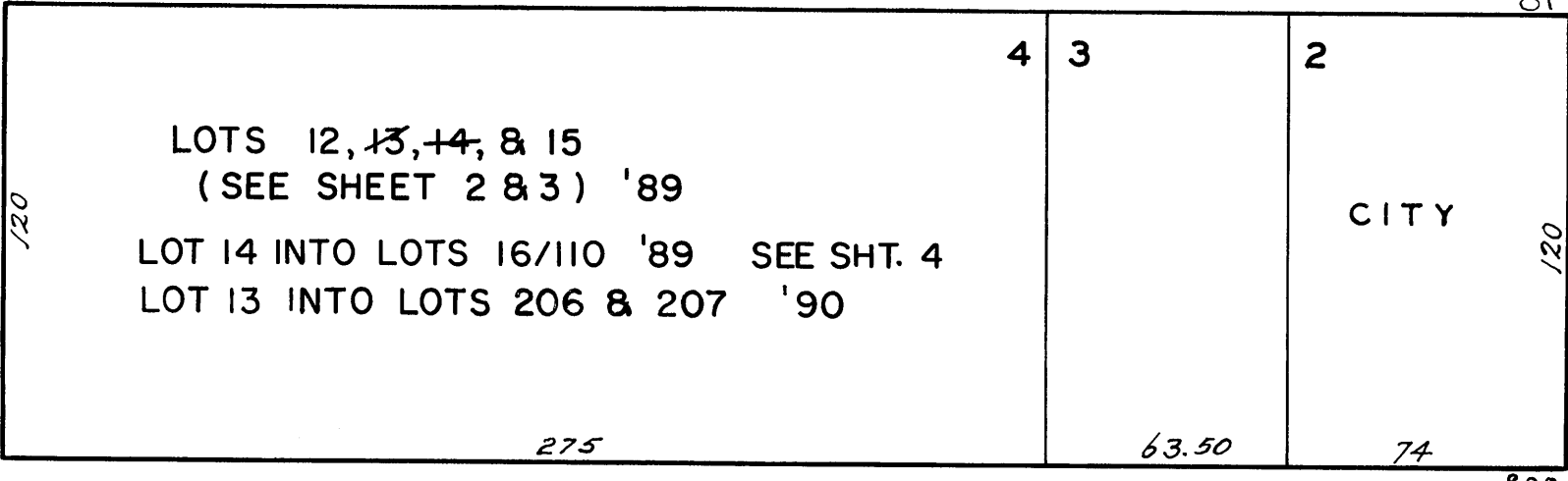
REVISED 1989
" '90



GEARY



MYRTLE

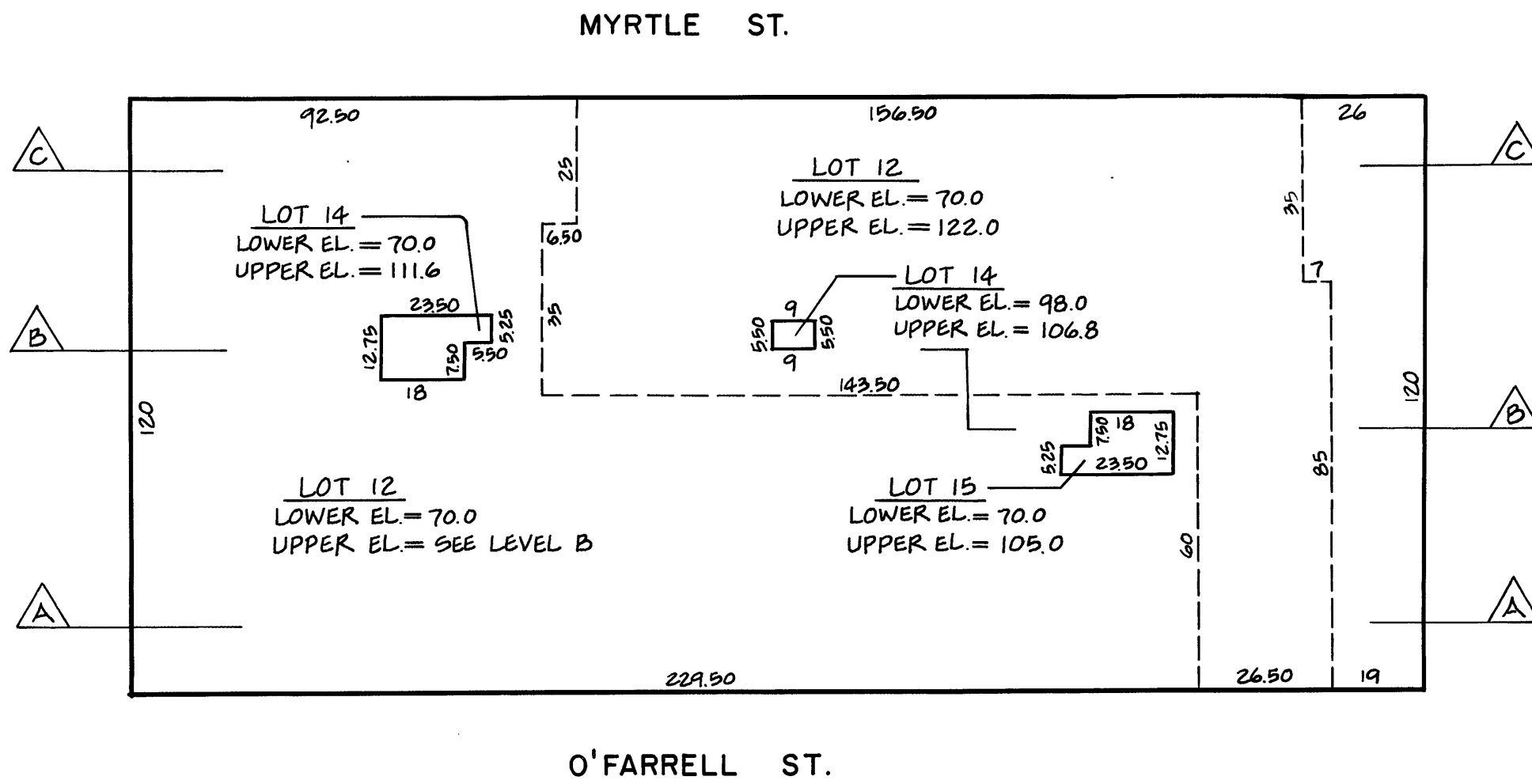
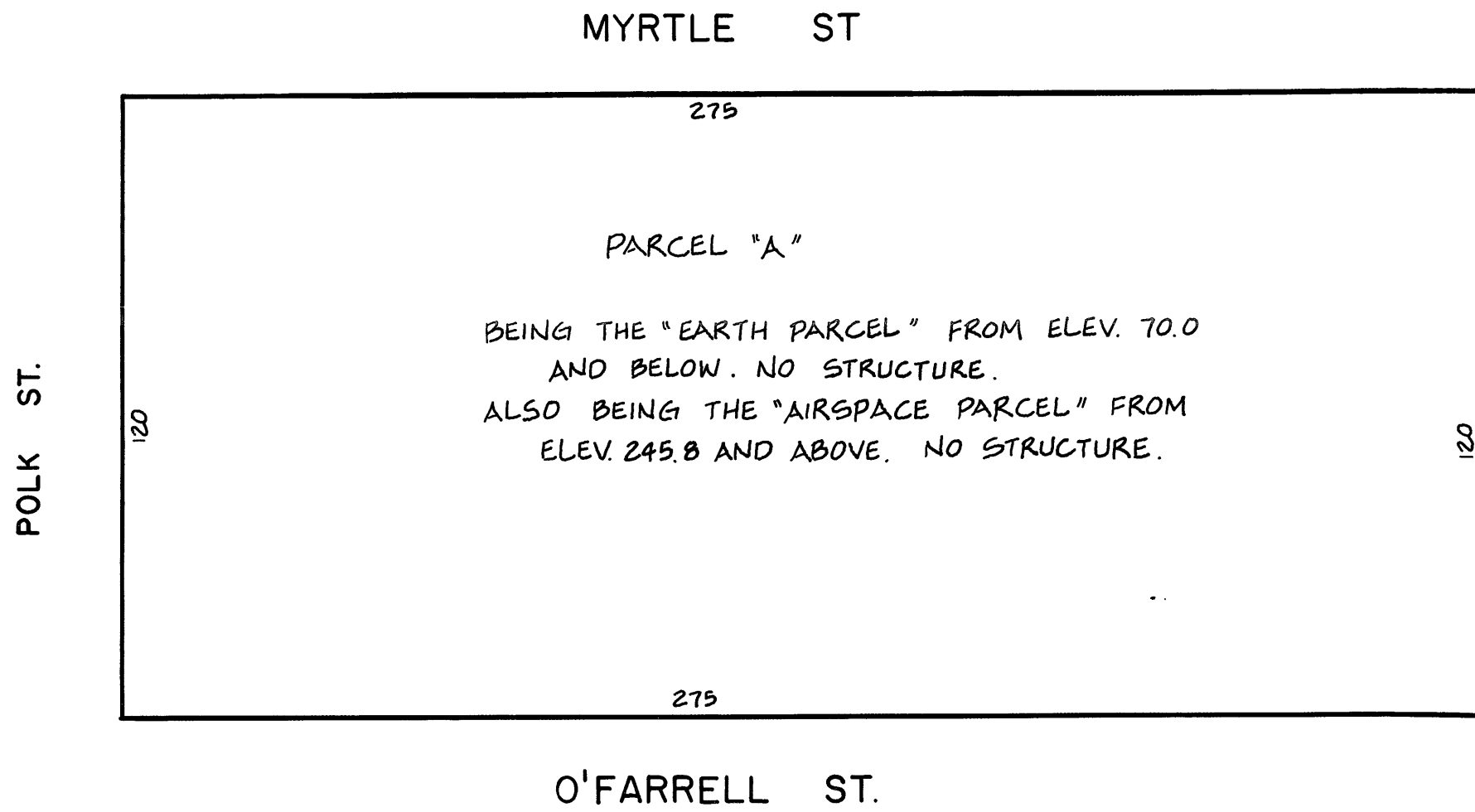
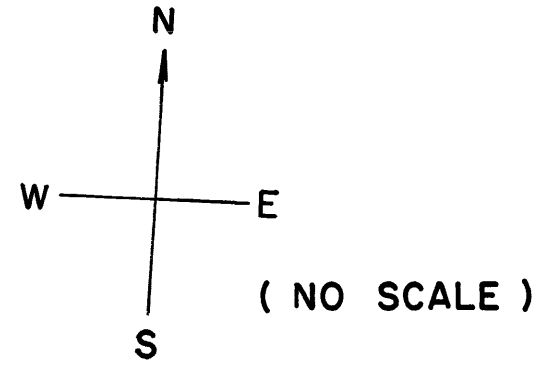


O'FARRELL

POLK

LARKIN

© COPYRIGHT SAN FRANCISCO
CITY & COUNTY ASSESSOR 1995





BAKEWELL BROWN PLAZA

870 O'FARRELL STREET

A CONDOMINIUM

UNIT #	LOT #	%*
401 W	16	1.0
402 W	17	1.0
403 W	18	1.0
404 W	19	1.0
405 W	20	1.0
406 W	21	1.0
407 W	22	1.0
408 W	23	1.0
409 W	24	1.0
501 W	25	1.0
502 W	26	1.1
503 W	27	1.0
504 W	28	1.0
505 W	29	1.0
506 W	30	1.0
507 W	31	1.0
508 W	32	1.0
509 W	33	1.0
510 W	34	1.0
601 W	35	1.0
602 W	36	1.1
603 W	37	1.0
604 W	38	1.0
605 W	39	1.0
606 W	40	1.0
607 W	41	1.0
608 W	42	1.0
609 W	43	1.0
610 W	44	1.0
701 W	45	1.0
702 W	46	1.1
703 W	47	1.0
704 W	48	1.0
705 W	49	1.0
706 W	50	1.0
707 W	51	1.0
708 W	52	1.0
709 W	53	1.0
710 W	54	1.0
801 W	55	1.0
802 W	56	1.1
803 W	57	1.0
804 W	58	1.0
805 W	59	1.0
806 W	60	1.0
807 W	61	1.0
808 W	62	1.0
809 W	63	1.0
810 W	64	1.0

UNIT #	LOT #	%*
901 W	65	1.0
902 W	66	1.1
903 W	67	1.0
904 W	68	1.0
905 W	69	1.0
906 W	70	1.0
907 W	71	1.0
908 W	72	1.0
909 W	73	1.0
910 W	74	1.0
1001 W	75	1.0
1002 W	76	1.1
1003 W	77	1.0
1004 W	78	1.0
1005 W	79	1.0
1006 W	80	1.0
1007 W	81	1.0
1008 W	82	1.0
1009 W	83	1.0
1010 W	84	1.0
1101 W	85	1.1
1102 W	86	1.1
1103 W	87	1.0
1104 W	88	1.0
1105 W	89	1.0
1106 W	90	1.0
1107 W	91	1.0
1108 W	92	1.0
1109 W	93	1.0
1110 W	94	1.1
1201 W	95	1.3
1202 W	96	1.2
1203 W	97	1.0
1204 W	98	1.0
1205 W	99	1.0
1206 W	100	1.0
1207 W	101	1.2
1208 W	102	1.2
1209 W	103	1.2
1210 W	104	1.1
1211 W	105	1.0
1212 W	106	1.0
1213 W	107	1.0
1214 W	108	1.0
1215 W	109	1.2
1216 W	110	1.3

* DENOTES PERCENTAGE
OF COMMON AREA

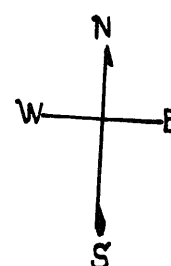
LOTS MERGED
LOTS INTO LOT
5 - 4 - 1944

lots 6 & 7 into lot 280 for 2007 roll

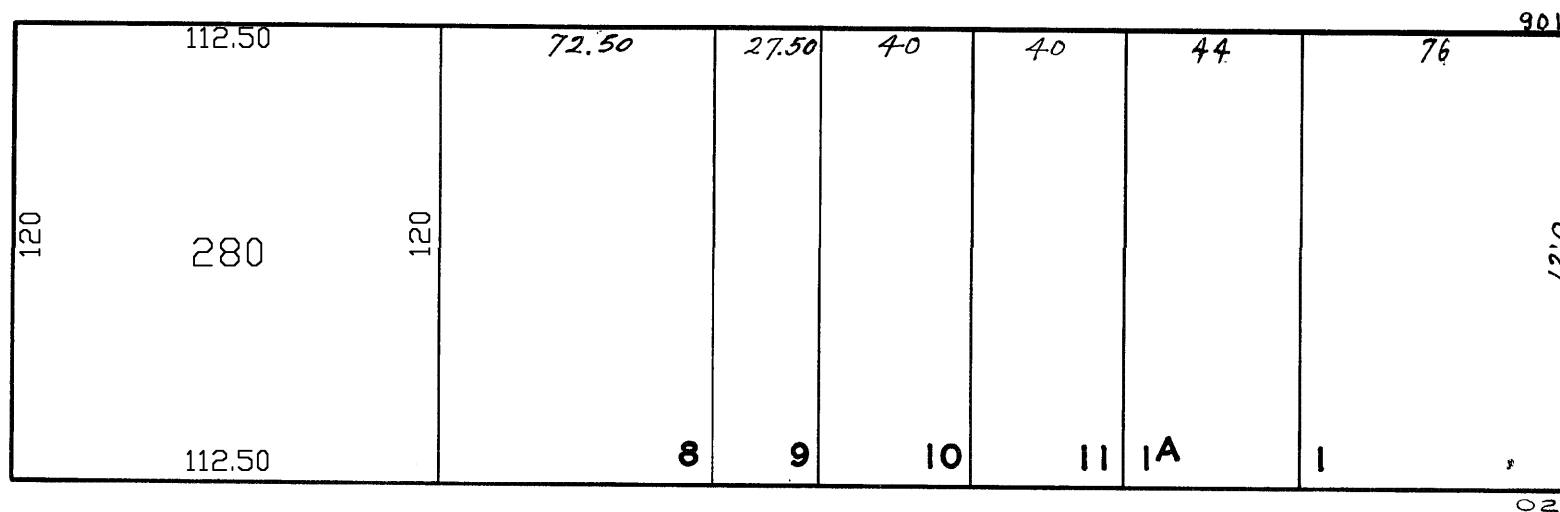
W A BLK. 10

REVISED 1989
" '90

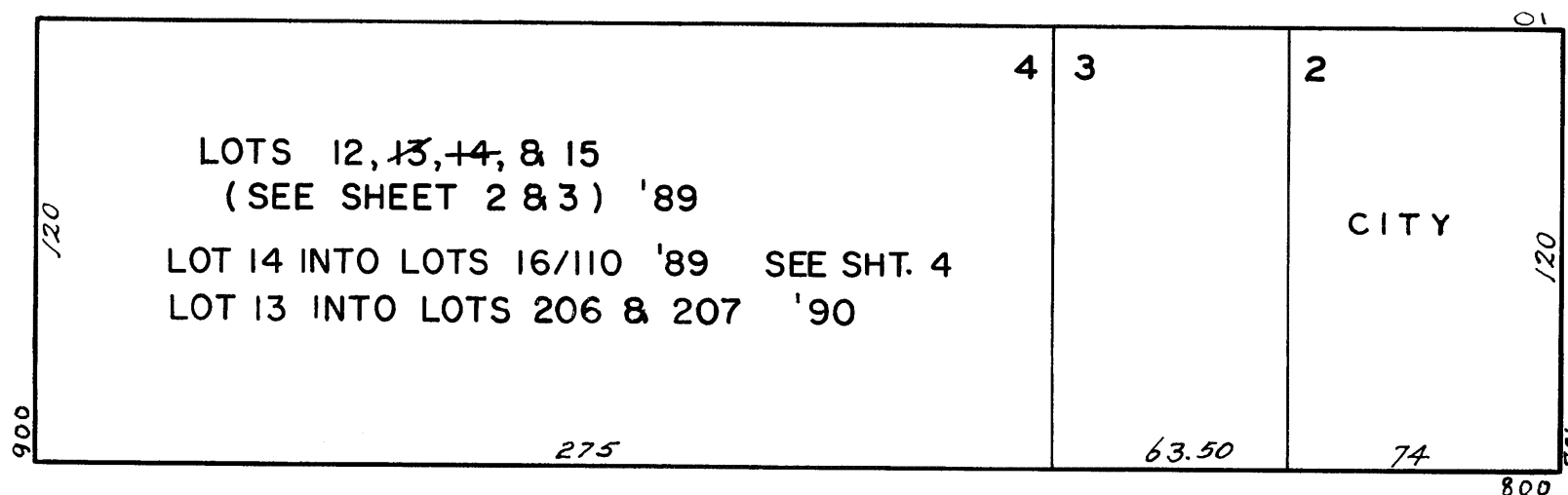
Revised 2007



GEARY



MYRTLE



O'FARRELL

POLK

LARKIN