

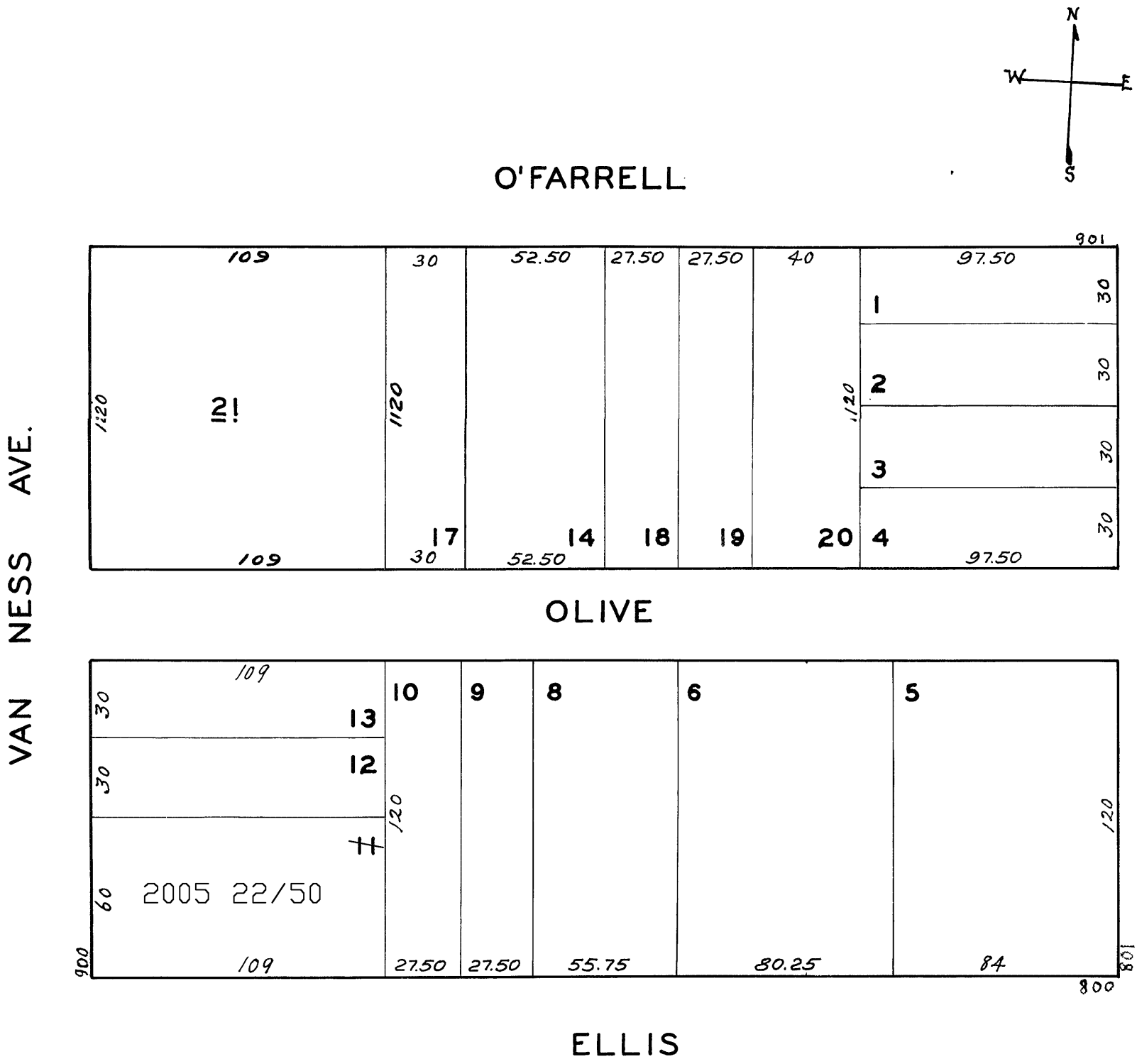
718

WA BLK 61
REVISED 1958
1959
REVISED 1979

Revised 2005

LOTS MERGED
LOTS INTO LOT
7 - 6 - 1944
14A - 17 - "
17A - 14 - "

lot11 into lots22to50 for 2005 roll



900 VAN NESS AVE.

LOT	UNIT	% COMM. AREA
22	COMM'L	13.25
23	201	2.13
24	202	3.12
25	203	3.80
26	204	3.43
27	301	2.75
28	302	3.12
29	303	3.80
30	304	3.55
31	401	2.75
32	402	3.12
33	403	3.80
34	404	3.55
35	501	2.75
36	502	3.12
37	503	3.80
38	504	3.55
39	601	2.75
40	602	3.12
41	603	3.83
42	604	3.28
43	701	2.75
44	702	3.12
45	703	3.51
46	704	2.13
47	801	2.76
48	802	3.05
49	803	2.51
50	804	1.80