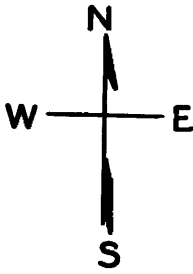


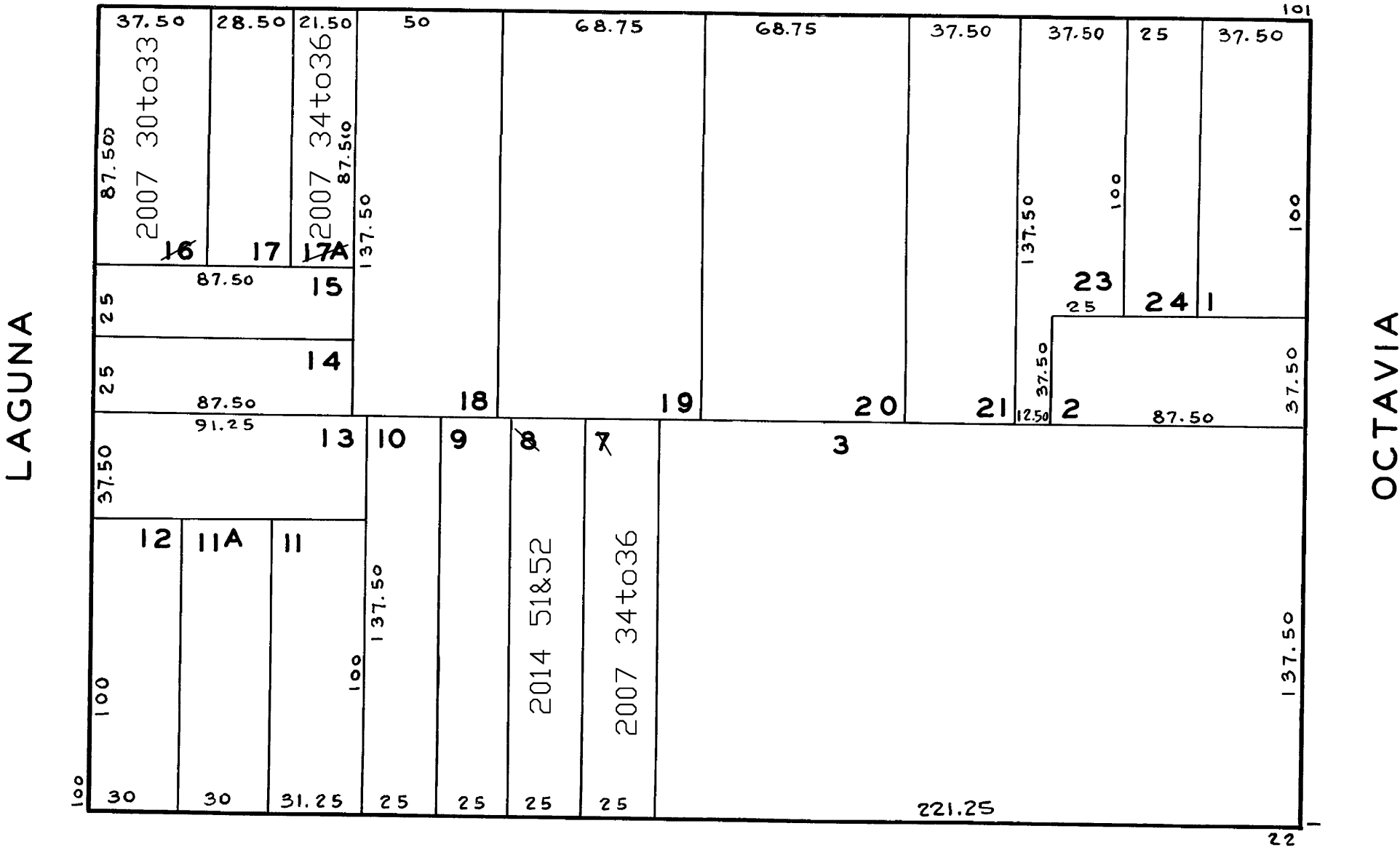
LOTS MERGED

LOTS	INTO	LOTS
22	"	21 - "1944"
4	"	3 - "1945"
5/6	"	3 - '54

lot16 into lots30to33 for 2007 roll
lot7 into lots37&38 for 2007 roll
lot17A into lots34to36 for 2007 roll
lot8 into lots51&52 for 2014 roll



HAIGHT



WALLER

58-60 WALLER ST. A CONDOMINIUM		
LOT	UNIT	% COMM. AREA
37	58	50
38	60	50

175-179 HAIGHT ST. A CONDOMINIUM		
LOT	UNIT	% COMM. AREA
34	175	33.33
35	177	33.33
36	179	33.34

182-184 LAGUNA ST. & 191-193 HAIGHT ST. A CONDOMINIUM		
LOT	UNIT	% COMM. AREA
30	182	14
31	184	50
32	191	20
33	193	16