

W A BLK. 557

REVISED 1984

" '86
" '88
" '93

Revised 2004
Revised 2007

REVISED 2015

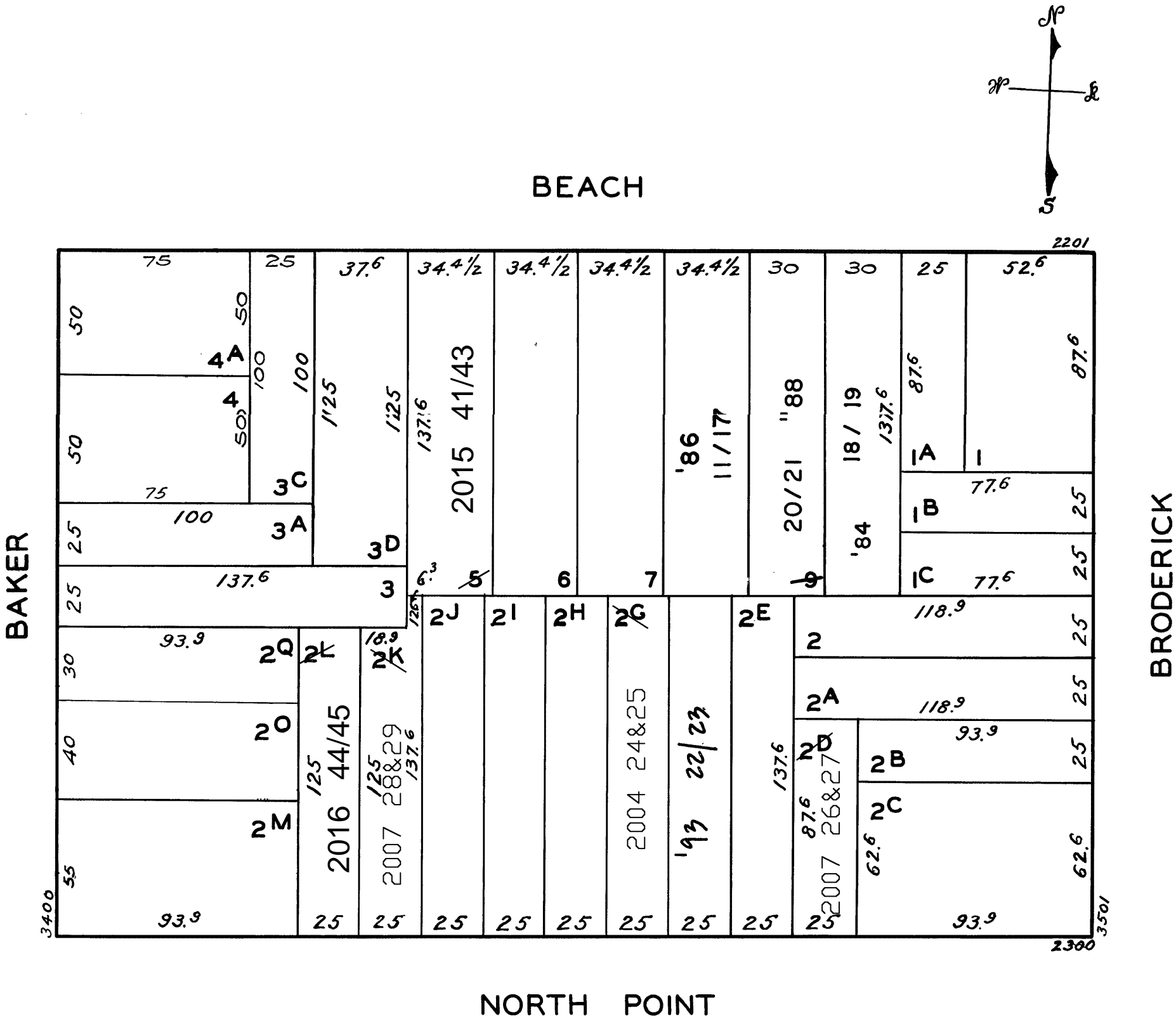
REVISED 2016

LOTS MERGED

Lot 2ⁿ merged into lot 2^m - 44
" 2^p " " 2^o - 44
" 3^q " " 4^r - 51
lot 2G into lots 24&25 for 2004 roll
lot 2K into lots 28&29 for 2007 roll
lot 2J into lots 26&27 for 2007 roll

© COPYRIGHT SAN FRANCISCO
CITY & COUNTY ASSESSOR 1995

Lot 5 into lots 41 to 43 for 2015 roll
Lot 2L into lots 44 & 45 for 2016 roll



2235 BEACH ST.		
A CONDOMINIUM		
LOT	UNIT	% COMM. AREA
11	101	15.7020
12	102	15.8485
13	201	15.7020
14	202	15.8485
15	301	15.7020
16	302	15.9441
17	401	5.2529

2322-2324 NORTH POINT ST.		
A CONDOMINIUM		
LOT	UNIT	% COMM. AREA
26	2322	47.9
27	2324	52.1

2221-2223 BEACH ST.		
A CONDOMINIUM		
LOT NO.	UNIT NO.	% COMMON AREA
18	2223	47.93
19	2221	52.07

2334 NORTH POINT ST.		
A CONDOMINIUM		
LOT	UNIT	% COMM. AREA
22	101	47.63
23	201	52.37

2227-29 BEACH ST.		
A CONDOMINIUM		
LOT	UNIT	% COMM. AREA
20	2227	50
21	2229	50

2340-2342 NORTH POINT ST.		
A CONDOMINIUM		
LOT	UNIT	% COMM. AREA
24	2340	52.4
25	2342	47.6

2364-2366 NORTH POINT ST.		
A CONDOMINIUM		
LOT	UNIT	% COMM. AREA
28	2364	50
29	2366	50