

Lot 14 merged with lot 13-44
" 2 " " " 1-51

© COPYRIGHT SAN FRANCISCO
CITY & COUNTY ASSESSOR 1995

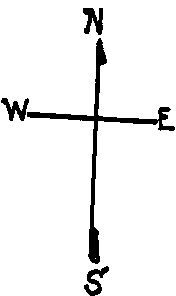
927
W A BLK. 486

REVISED 1993

Revised '99
Revised 2002
Revised 2003
Revised 2009
Revised 2010

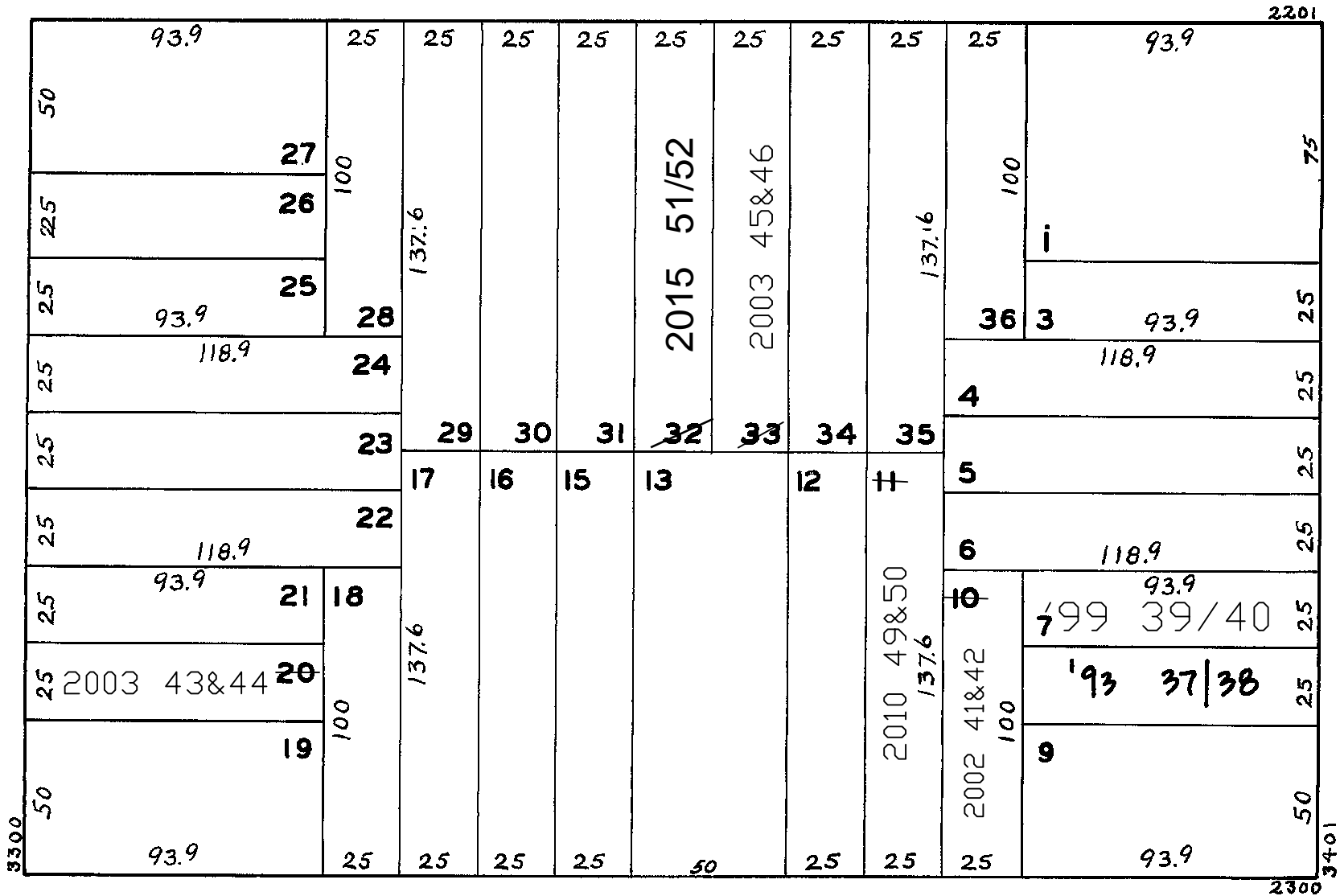
REVISED 2015

lot7 into lots 39&40 for 1999 roll
lot10 into lots41&42 for 2002 roll
lot20 into lots43&44 for 2003 roll
lot33 into lots45&46 for 2003 roll
lot6 into lots47&48 for 2009 roll
lot11 into lots49&50 for 2010 roll
Lot 32 into lots 51 & 52 for 2015 roll



BAY

BRODERICK



DIVISADERO

FRANCISCO

| 3423-3425 DIVISADERO STREET | | | |
|-----------------------------|------|--------------|--|
| A CONDOMINIUM | | | |
| LOT | UNIT | % COMM. AREA | |
| 39 | 1 | 37.75 | |
| 40 | 2 | 62.25 | |

| 2322-2324 FRANCISCO ST. | | | |
|-------------------------|------|--------------|--|
| A CONDOMINIUM | | | |
| LOT | UNIT | % COMM. AREA | |
| 41 | 2322 | 35.60 | |
| 42 | 2324 | 64.40 | |

| 3312-3314 BRODERICK ST. | | | |
|-------------------------|------|--------------|--|
| A CONDOMINIUM | | | |
| LOT | UNIT | % COMM. AREA | |
| 43 | 3312 | 53.64 | |
| 44 | 3314 | 46.36 | |

| 2241-2243 BAY ST. | | | |
|-------------------|------|--------------|--|
| A CONDOMINIUM | | | |
| LOT | UNIT | % COMM. AREA | |
| 45 | 2241 | 50 | |
| 46 | 2243 | 50 | |

| 3415 - 3417 DIVISADERO ST | | |
|---------------------------|------|--------------|
| A CONDOMINIUM | | |
| LOT | UNIT | % COMM. AREA |
| 37 | 3415 | 51.87 |
| 38 | 3417 | 48.13 |