

LOTS MERGED

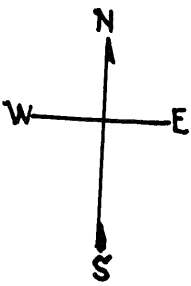
Lot 11 merged into lot 10-44
lot22 into lots42to44 for 1998 roll

© COPYRIGHT SAN FRANCISCO
CITY & COUNTY ASSESSOR 1995

Lot 10 into lots 61 to 64 for 2017 roll

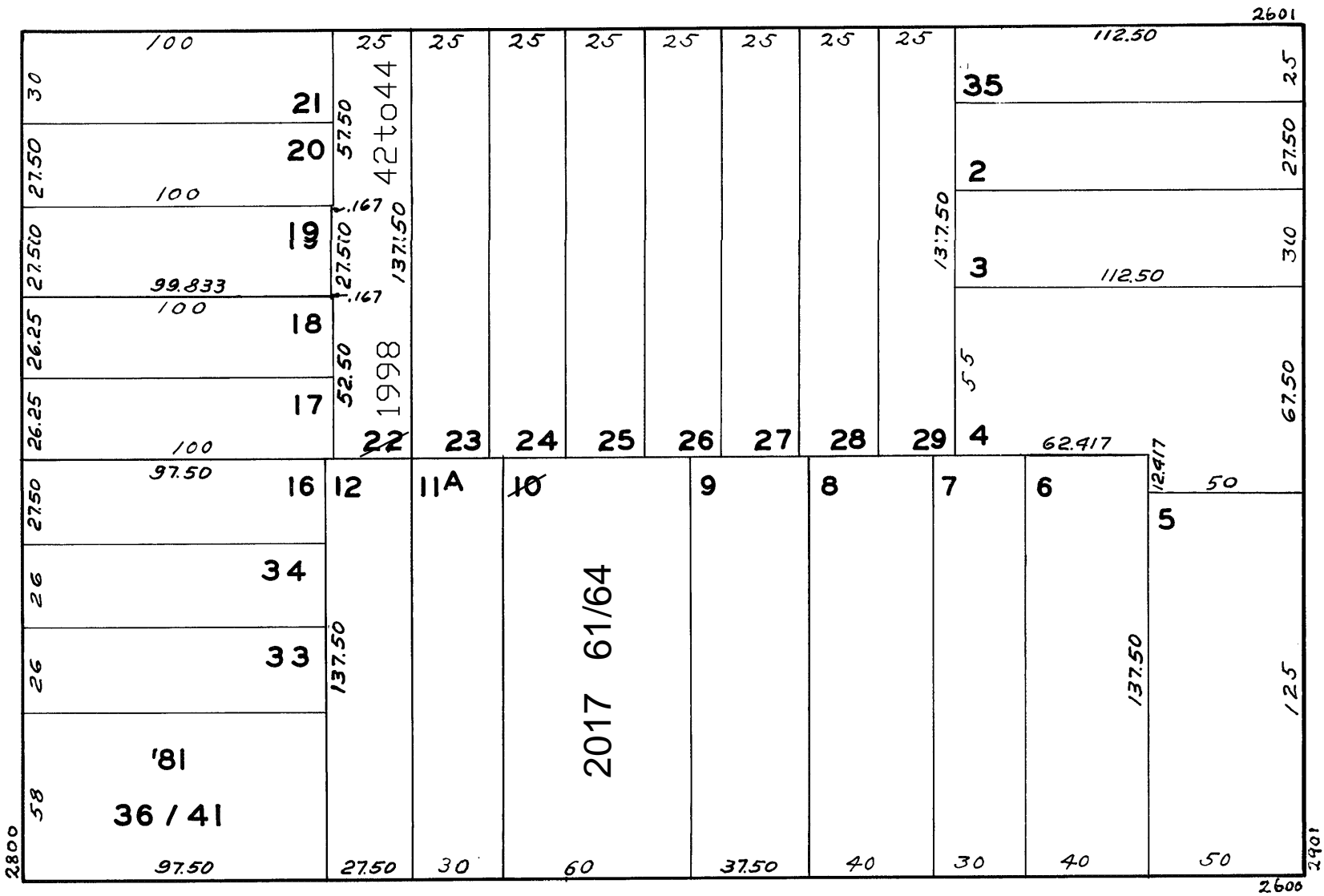
W A BLK. 491 946

REVISED '57
" '71
" '81
Revised 1998
REVISED 2017



FILBERT

BRODERICK



DIVISADERO

UNION

2676 - 2686 UNION ST.

A CONDOMINIUM

LOT NO.	UNIT NO.	% COMMON AREA
36	2676	7.359
37	2678	7.558
38	2680	7.609
39	2682	22.827
40	2684	22.621
41	2686	32.026

2671-2675 FILBERT ST.

A CONDOMINIUM

LOT	UNIT	% COMM. AREA
42	2671	33.45
43	2673	31.83
44	2675	34.72