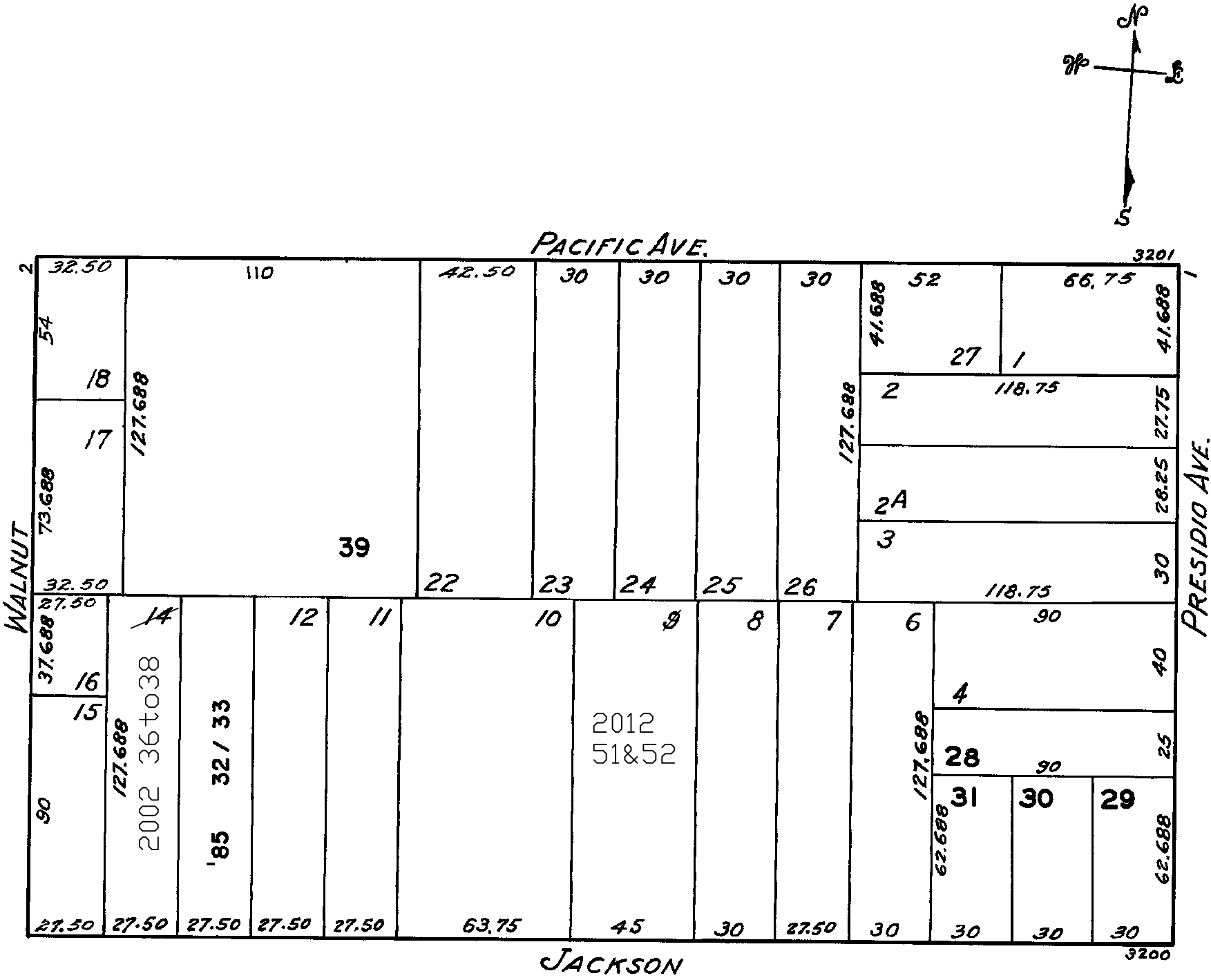


© COPYRIGHT SAN FRANCISCO
CITY & COUNTY ASSESSOR 1995

W A BLK. 804

Lots 20-21 merged into lot 19- '44
lot14 into lots36to38 for 2002 roll
lot9 into lots51&52 for 2012 roll

REVISED '72
" '85
" '89
" '92
Revised 2002
Revised 2012



3282-3284 JACKSON ST.		
A CONDOMINIUM		
LOT NO.	UNIT NO.	% COMMON AREA
32	32 82	52.08
33	32 84	47.92

3286-3288-3290 JACKSON ST.		
A CONDOMINIUM		
LOT	UNIT	% COMM. AREA
36	3286	29.96
37	3290	41.44
38	3288	28.60