

ASSESSOR-RECORDER'S OFFICE

Lot 2 merged into lot 1-44
29 28

lot4 into lots68to73 for 1997 roll
lot24 into lots56to58 for 1998 roll
lot30 into lots74&75 for 2002 roll

© COPYRIGHT SAN FRANCISCO
CITY & COUNTY ASSESSOR 1995

W A BLK. 544

981

REVISED 1974
" '76
REVISED 1980
REVISED 1981
" '85
" '88
" '90
" '91
" '93
" '94

Revised 1997
Revised 1998
Revised 2002

2947-2949 JACKSON ST.

A CONDOMINIUM

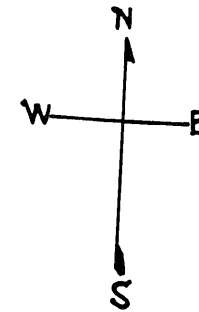
LOT	UNIT	% COMM. AREA
61	2947A	14.875
62	2947	33.549
63	2949	31.532
64	2949A	20.044

2114 BAKER ST.
A CONDOMINIUM

LOT	UNIT	% COMM. AREA
56	1	13.58
57	2	32.99
58	3	53.43

2955-2957 JACKSON ST.
A CONDOMINIUM

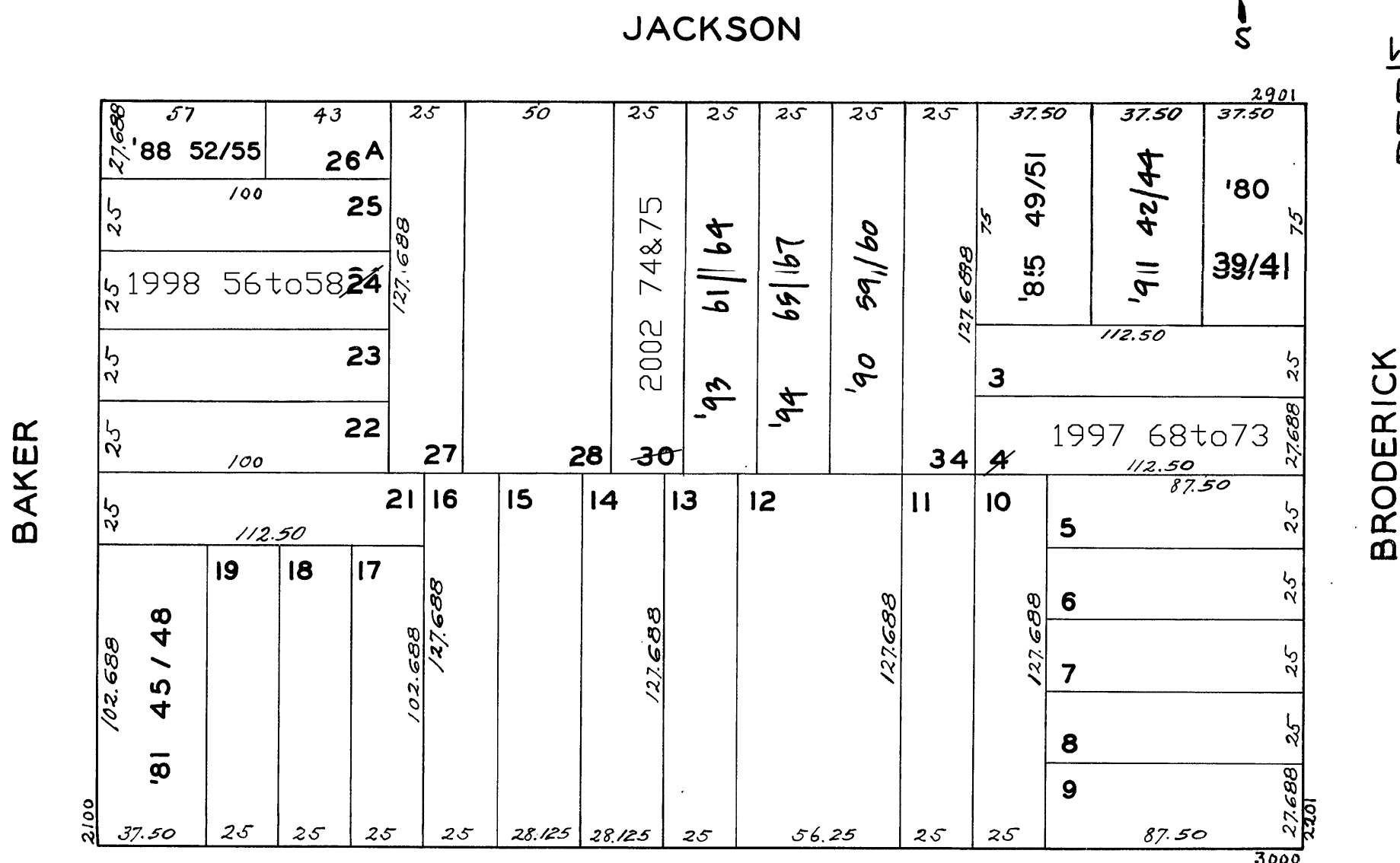
LOT	UNIT	% COMM. AREA
74	2957	45.3
75	2955	54.7



2925-2927-2929 JACKSON ST.

A CONDOMINIUM

LOT	UNIT	% COMM. AREA
65	2925	42.15
66	2927	34.10
67	2929	23.75



WASHINGTON

2102 BAKER ST.
3096 WASHINGTON ST.

A CONDOMINIUM

LOT NO.	UNIT NO.	% COMMON AREA
45	2102	22.755
46	2100	32.095
47	3096	27.904
48	3098	17.246

2915-2919 JACKSON ST.
A CONDOMINIUM

LOT NO.	UNIT NO.	% COMMON AREA
49	2915	27.799
50	2917	43.869
51	2919	28.332

2249-2251-2253 BRODERICK STREET
A CONDOMINIUM

LOT NO.	UNIT NO.	% COMMON AREA
39	2249	27.233
40	2251	29.247
41	2253	43.520

2989 JACKSON ST.
A CONDOMINIUM

LOT	UNIT	% COMM. AREA
52	1	33.535
53	2	33.664
54	3	14.478
55	4	18.323

2923 JACKSON ST.
A CONDOMINIUM

LOT	UNIT	% COMM. AREA
59	1	64.77
60	2	35.23

2907-09-11 JACKSON ST.
A CONDOMINIUM

LOT	UNIT	% COMM. AREA
42	2907	27.55
43	2909	26.45
44	2911	46.00