

# ASSESSOR-RECORDER'S OFFICE

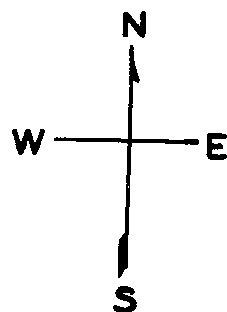
© COPYRIGHT SAN FRANCISCO  
CITY & COUNTY ASSESSOR 1995

**LOTS MERGED**  
 LOTS INTO LOT  
 28 " 27 '1944'  
 30 " 29 '1944'

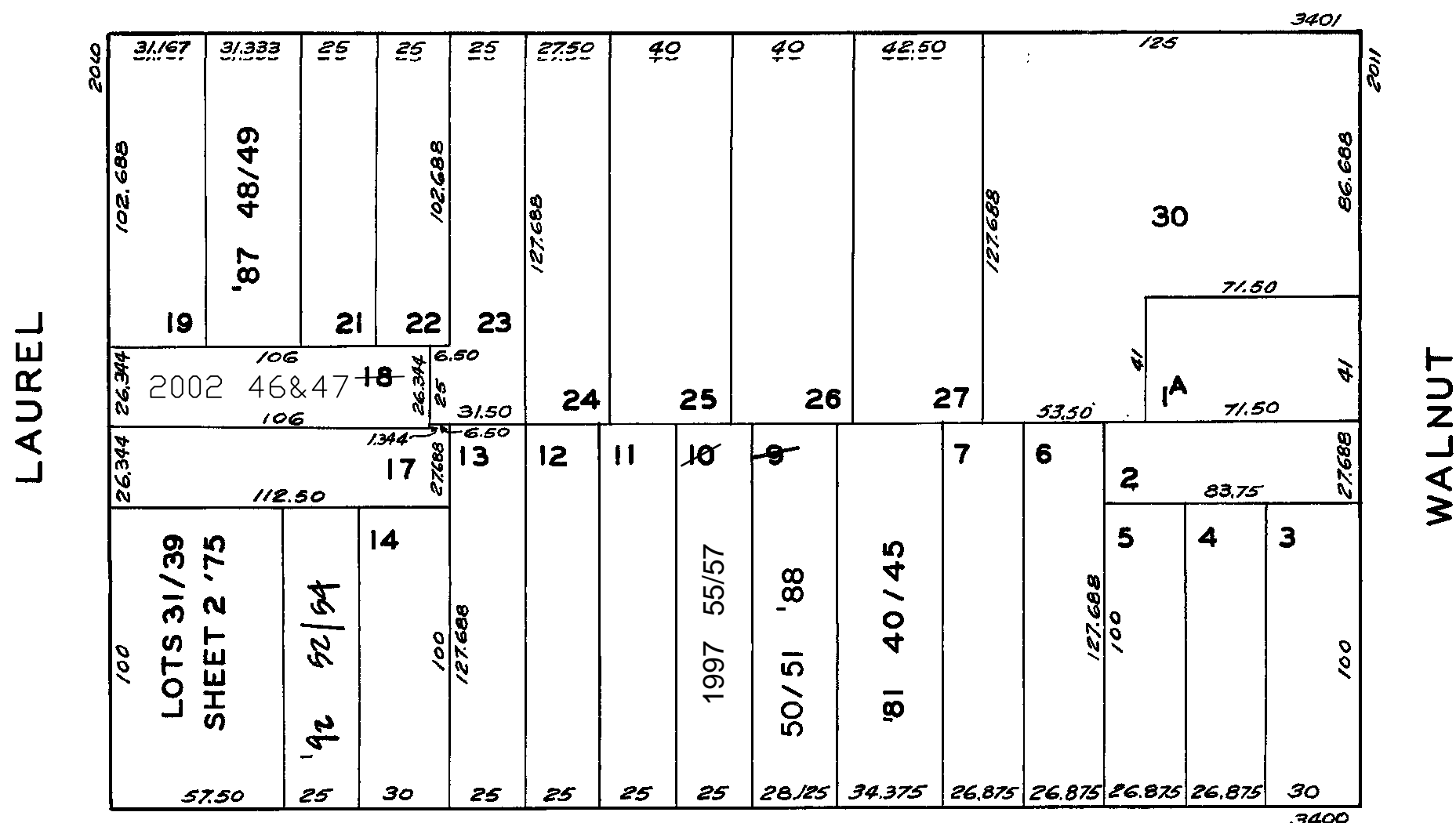
lot18 into lots46&47 for 2002 roll  
 Lot 10 into lots 55 to 57 for 1997 roll

**996**  
 SHEET 1  
 W A BLK. 814

REVISED 1971  
 " '75  
 " '81  
 " '87  
 " '88  
 " '92  
 Revised 2002  
 REVISED 1997



## WASHINGTON



## CLAY

### 3440-3442 CLAY ST

A CONDOMINIUM		
LOT	UNIT	% COMM. AREA
50	3440	63.60
51	3442	36.40

### 3485-3487 WASHINGTON ST.

A CONDOMINIUM		
LOT	UNIT	% COMM. AREA
48	3485	50.31
49	3487	49.69

### 3436 CLAY ST.

A CONDOMINIUM		
LOT NO.	UNIT NO.	% COMMON AREA
40	1	11.563
41	2	19.512
42	3	15.200
43	4	19.276
44	5	15.200
45	6	19.276

### 240-242 LAUREL ST.

A CONDOMINIUM		
LOT	UNIT	% COMM. AREA
46	240	38.72
47	242	61.28

### 3476-3480 CLAY ST.

A CONDOMINIUM		
LOT	UNIT	% COMM. AREA
52	3480	25.44
53	3478	26.66
54	3476	47.90

250 LAUREL

A CONDOMINIUM

LOT NO	UNIT NO	% COMMON AREA PER LOT
31	101	8.569
(COMMON AREA)	102	0.00
32	201	12.211
33	202	10.439
34	301	12.367
35	302	10.560
36	401	12.367
37	402	10.560
38	501	12.367
39	502	10.560

