

LOTS MERGED

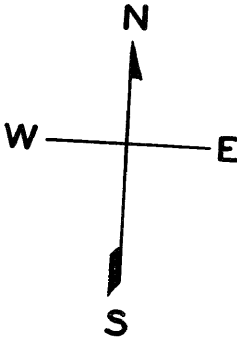
LOTS INTO LOT  
9#10 " 8 '1944'

lot3 into lots43&44 for 2004 roll

1007

W A BLK. 623

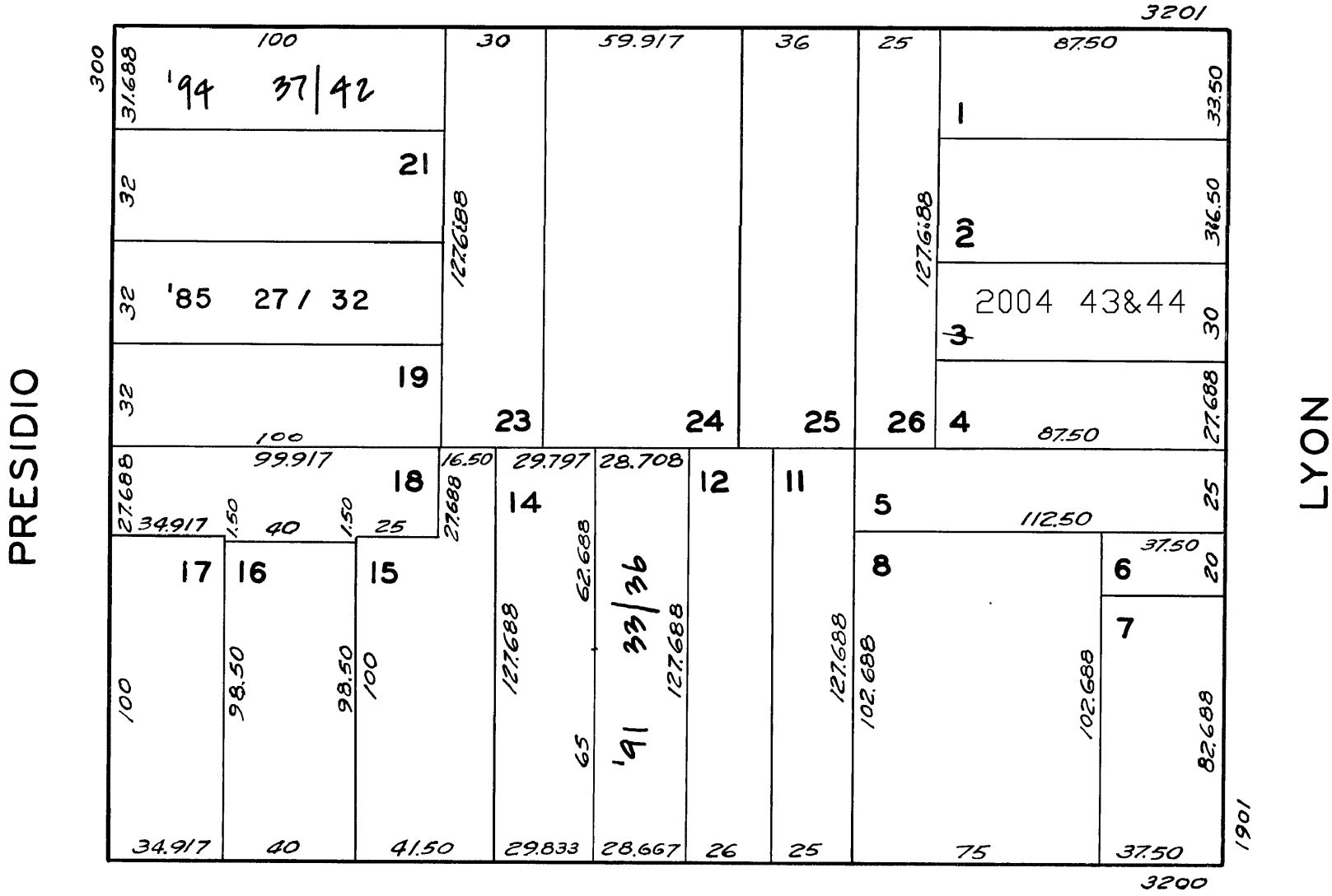
REVISED 1985  
" '91  
" '94  
Revised 2004



3295 CLAY ST.		
A CONDOMINIUM		
LOT	UNIT	% COMM. AREA
37	1	15.329
38	2	13.750
39	3	17.171
40	4	17.171
41	5	18.224
42	6	18.355

1941-1943 LYON ST.		
A CONDOMINIUM		
LOT	UNIT	% COMM. AREA
43	1941	47.13
44	1943	52.81

CLAY



SACRAMENTO

322 PRESIDIO AVE.		
A CONDOMINIUM		
LOT NO	UNIT NO	% COMMON AREA
27	1	16.16
28	2	16.46
29	3	16.72
30	4	16.88
31	5	16.89
32	6	16.89

3240 SACRAMENTO ST.		
A CONDOMINIUM		
LOT	UNIT	% COMM. AREA
33	3240 A	27.20
34	3240 B	27.51
35	3240 C	25.34
36	3240 D	19.95