

ASSESSOR-RECORDER'S OFFICE

Lot 12 merged into lot 11- '44

© COPYRIGHT SAN FRANCISCO
CITY & COUNTY ASSESSOR 1995

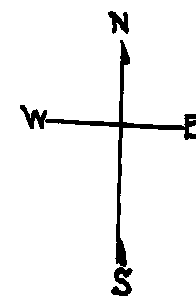
1011

W A BLK. 831

lot 3 into lots 29/31 for 1999 roll
lot7 into lots64&65 for 2000 roll
lot24 into lots66/69 for 2001 roll
lot20 into lots73&74 for 2013 roll
Lot 6 into lots 75 & 76 for 2016 roll

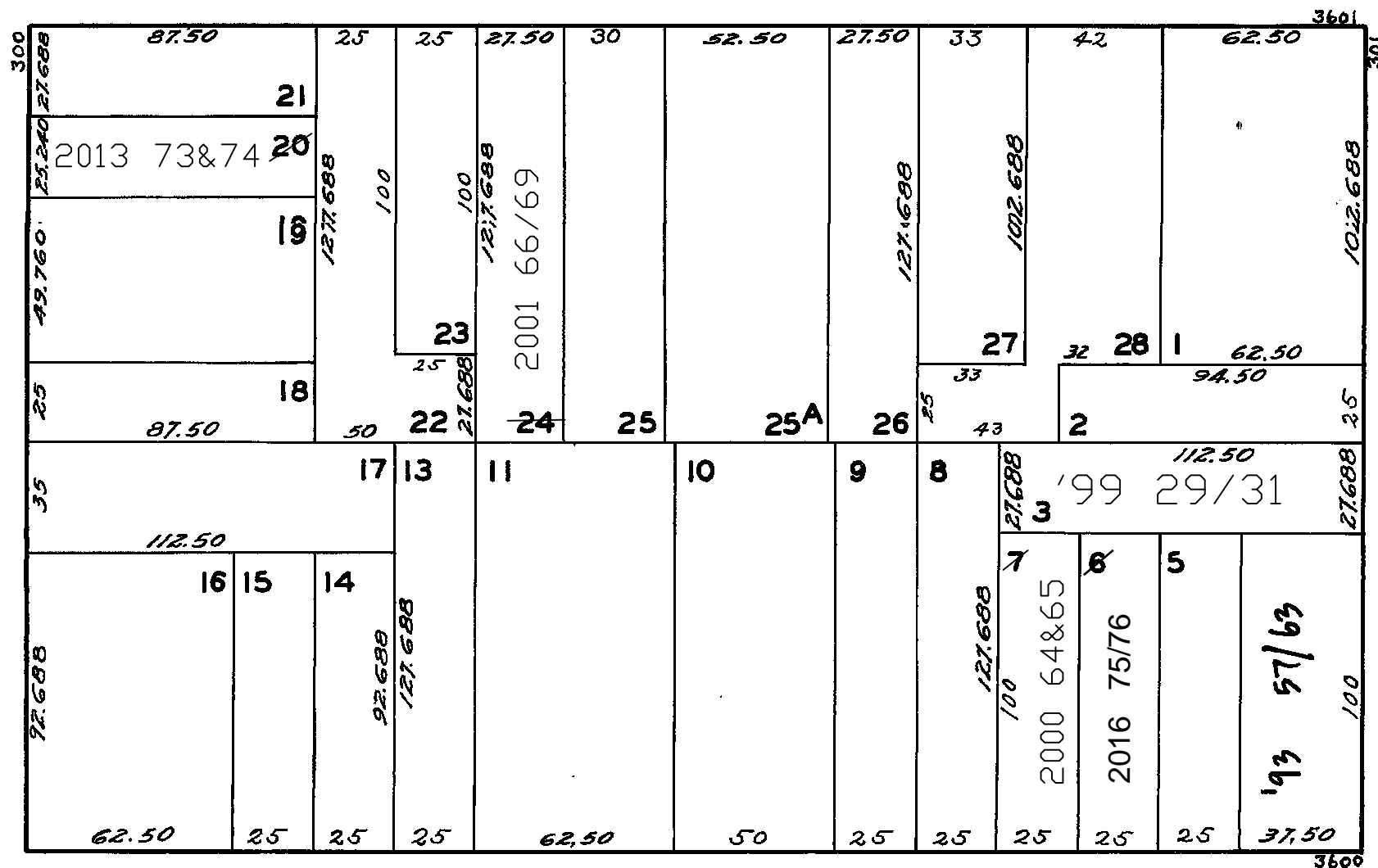
REVISED 1993

Revised '99
Revised 2000
Revised 2001
Revised 2013
REVISED 2016



CLAY

SPRUCE



LOCUST

SACRAMENTO

323-327 LOCUST STREET			
A CONDOMINIUM			
LOT	UNIT	% COMM. AREA	
29	323	29.90	
30	325	33.17	
31	327	36.93	

3622-3624 SACRAMENTO ST.			
A CONDOMINIUM			
LOT	UNIT	% COMM. AREA	
64	1	47	
65	2	53	

3661A-3661-3659-3663			
A CONDOMINIUM			
LOT	UNIT	% COMM. AREA	
66	3661A	12.13	
67	3661	27.74	
68	3659	28.58	
69	3663	31.55	

345 LOCUST ST.		
A CONDOMINIUM		
LOT	UNIT	% COMM. AREA
57	C-1	6.55
58	C-2	7.70
59	1	14.94
60	2	17.48
61	3	18.82
62	4	16.47
63	5	18.04