

Lot 2 merged into lot 1 - 1944
Lots 7-8 merged into lot 6 -
18-19 merged into lot 17

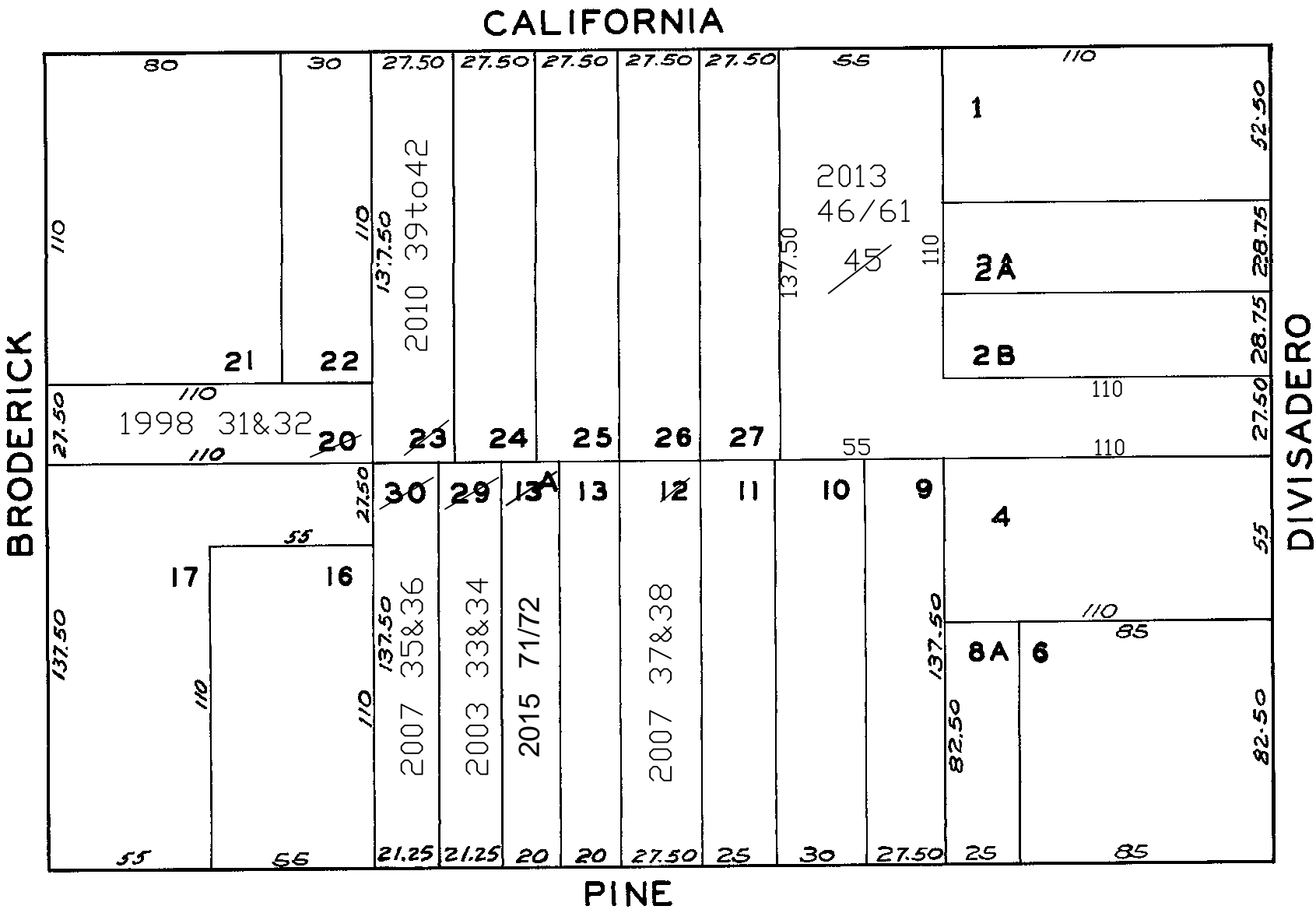
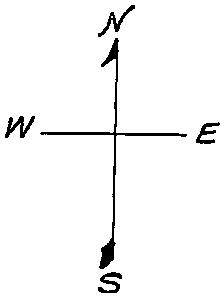
lot20 into lots31&32 for 1998 roll
lot29 into lots33&34 for 2003 roll
lot30 into lots35&36 for 2007 roll
lot12 into lots37&38 for 2007 roll
lot13 into lots43&44 for 2009 roll
lot23 into lots39to42 for 2010 roll
lots3&28 into lot45 for 2012 roll
lot45 into lots 46/61 for 2013 roll
Lot 13A into lots 71 & 72 for 2015 roll

W A BLK. 501

REVISED 1980

Revised 1998
Revised 2003
Revised 2007
Revised 2009
Revised 2010
Revised 2012
Revised 2013

REVISED 2015



1832-1834 BRODERICK ST.			
A CONDOMINIUM			
LOT	UNIT	% COMM.	AREA
31	1832	48.3	
32	1834	51.7	

2758-2760 PINE ST.			
A CONDOMINIUM			
LOT	UNIT	% COMM.	AREA
33	2758	52.1	
34	2760	47.9	

2762-2764 PINE ST.			
A CONDOMINIUM			
LOT	UNIT	% COMM.	AREA
35	2762	44.9	
36	2764	55.1	

2716-2718 PINE ST.	
LOT	UNIT
37	2716
38	2718