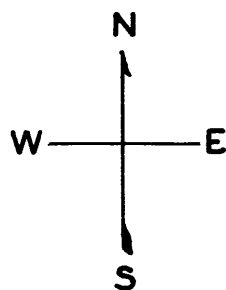


LOTS MERGED

Lot 30 merged into lot 29-44  
" 17A " " 17/8-'52  
" 43 " " 42-'52  
" 40 " " 37/39-'22  
" 24 OMITTED  
" 23 merged into lot 22 -'56

© COPYRIGHT SAN FRANCISCO  
CITY & COUNTY ASSESSOR 1995

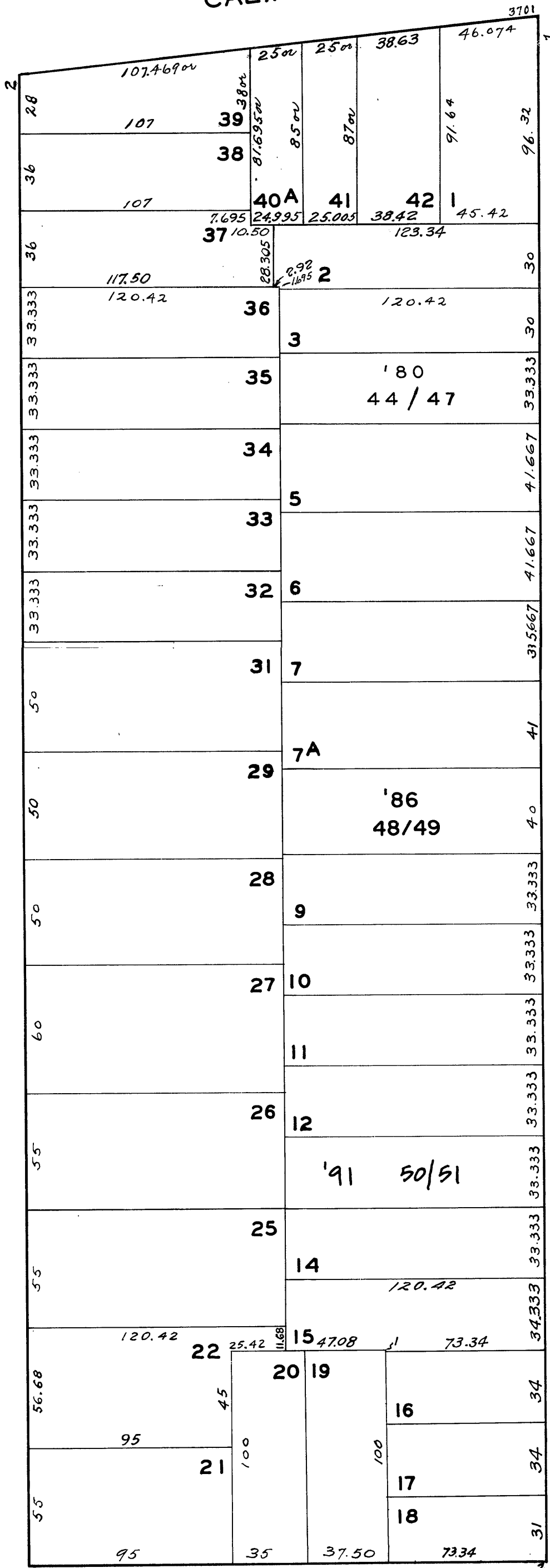


1037  
W A BLK. 857

REVISED '80  
" '86  
" '91

CALIFORNIA

COMMONWEALTH AVE.



EUCLID AVE.

25-27-29 PARKER ST.  
A CONDOMINIUM

LOT NO.	UNIT NO.	%COMMON AREA
44	29A	19.821
45	29	39.490
46	25	20.223
47	27	20.466

51-53 PARKER AVE.  
A CONDOMINIUM

LOT	UNIT	% COMM. AREA
48	51	50
49	53	50

71-73 PARKER AVE. A CONDOMINIUM		
LOT	UNIT	% COMM. AREA
50	73	38.86
51	71	61.14